

**PHOTOGRAPHIC INVENTORY OF
AN HISTORIC ARCHITECTURAL SURVEY
OF
US 221 FROM NC 226 NEAR WOODLAWN
TO
THE BLUE RIDGE PARKWAY
MCDOWELL, BURKE, AND AVERY COUNTIES, NORTH CAROLINA
TIP NO. R-2596 AND R-2596A
STATE PROJECT NO. 8.T871101**

PHASE II

**Prepared By:
Marvin A. Brown
James R. Snodgrass**

**GREINER, INC.
4630 Paragon Park Road
Raleigh, North Carolina 27604-3174
(919) 876-2760**

**Prepared For:
THE FEDERAL HIGHWAY ADMINISTRATION
AND
THE NORTH CAROLINA DEPARTMENT OF TRANSPORTATION**

AUGUST 1994

**PHOTOGRAPHIC INVENTORY OF
AN HISTORICAL ARCHITECTURAL SURVEY
OF
US 221 FROM NC 226 NEAR WOODLAWN
TO
THE BLUE RIDGE PARKWAY
MCDOWELL, BURKE, AND AVERY COUNTIES, NORTH CAROLINA
TIP NO. R-2596 AND TIP NO. R-2596A
STATE PROJECT NO. 8.T871101**

PHASE II

**Prepared By:
Marvin A. Brown
James R. Snodgrass
August 1994**

**GREINER, INC.
4630 Paragon Park Road
Raleigh, North Carolina 27604-3174
(919) 876-2760**

**Prepared For:
The Federal Highway Administration
and
The North Carolina Department of Transportation**

**PHOTOGRAPHIC INVENTORY
FOR WIDENING OF
US 221 FROM NC 226 NEAR WOODLAWN TO
THE BLUE RIDGE PARKWAY
MCDOWELL, BURKE, AND AVERY COUNTIES
TIP NO. R-2596 AND R-2596A
STATE PROJECT NO. 8.T871101**

Note: Subsequent to the preparation of this report, the limits of the project were reduced to begin at NC 226 and end north of SR 1569 in McDowell County. The resources within this reduced area (TIP No. R-2596A) are pictured as #1 through #7 in this photographic inventory.

<i>PROPERTY NUMBER</i>	<i>DIRECTION OF VIEW</i>	<i>PROPERTY IDENTIFICATION (NAME AND/OR LOCATION)</i>
1	Facing northwest	West side of US 221, 0.2 miles north of junction with NC 226, McDowell County
2	Facing north	West side of US 221, opposite junction with SR 1556, McDowell County
3	Facing northwest	West side of US 221, 0.4 miles north of junction with SR 1556, McDowell County
4	Facing west	West side of US 221, 0.2 miles north of junction with SR 1564, McDowell County
5	Facing north	West side of US 221, 0.3 miles south of junction with SR 1566, McDowell County
6	Facing northwest	West side of US 221, 0.2 miles south of junction with SR 1566, McDowell County
7	Facing northeast	William McCall Farmstead: West side of US 221, 0.2 miles north of junction with SR 1568, McDowell County
8	Facing north	West side of US 221, 0.8 miles north of junction with SR 1568, McDowell County
9	Facing west	Samuel and Joseph Gilkey Brown Farmstead: West side of US 221, 1.0 mile north of junction with SR 1568, McDowell County
10	Facing north	West side of US 221, 1.0 mile north of junction with SR 1578, McDowell County

<i>PROPERTY NUMBER</i>	<i>DIRECTION OF VIEW</i>	<i>PROPERTY IDENTIFICATION (NAME AND/OR LOCATION)</i>
11	Facing northwest	West side of US 221, 1.1 miles north of junction with SR 1578, McDowell County
12	Facing west	West side of US 221, 1.3 miles north of junction with SR 1578, McDowell County
13	Facing west	Henry Seawell Brown Farmstead: East side of US 221, 1.4 miles south of junction with SR 1560, McDowell County
14	Facing south	Caldwell-Brown House: East side of US 221, 1.1 miles south of junction with SR 1560, McDowell County
15	Facing west	West side of US 221, 1.0 mile south of junction with SR 1560, McDowell County
16	Facing southeast	East side of US 221, 1.0 mile south of junction with SR 1560, McDowell County
17	Facing west	West side of US 221, 0.85 miles south of junction with SR 1560, McDowell County
18	Facing north	McCall-Hefner House: West side of US 221, 0.8 miles south of junction with SR 1560, McDowell County
19	Facing east	Wiseman Family Corn Mill: West side of US 221, 0.6 miles south of junction with SR 1560, McDowell County
20	Facing west	North Cove Fork Bridge: On US 221 at crossing of North Fork of the Catawba River, 0.4 miles south of junction with SR 1560, McDowell County
21	Facing north	Clarence W. Wiseman Store: West side of US 221, 0.3 miles south of junction with SR 1560, McDowell County
22	Facing north	Over US 221, 0.2 miles south of junction with SR 1560, McDowell County
23	Facing southwest	South side of SR 1560, 0.05 miles east of junction with US 221, McDowell County

<i>PROPERTY NUMBER</i>	<i>DIRECTION OF VIEW</i>	<i>PROPERTY IDENTIFICATION (NAME AND/OR LOCATION)</i>
24	Facing south	Concord United Methodist Church: East side of SR 1560, 0.2 miles east of junction with US 221, McDowell County
25	Facing north	Connelly-Phillips House: East side of US 221, 0.4 miles north of junction with SR 1560, McDowell County
26	Facing west	West side of US 221, 1.3 miles north of junction with SR 1560, McDowell County
27	Facing east	East side of US 221, 1.5 miles north of junction with SR 1560, McDowell County
28	Facing northwest	William Jehu English Farmstead: West side of US 221, 1.7 miles north of junction with SR 1560, McDowell County
29	Facing northwest	East side of US 221, 1.9 miles north of junction with SR 1560, McDowell County
30	Facing east	East side of US 221, 2.2 miles north of junction with SR 1560, McDowell County
31	Facing east	Linville Falls Post Office: North side of NC 183, 0.05 miles east of junction with US 221, Linville Falls, Burke County
32	Facing east	Linville Falls Jail: Northeast corner of junction of US 221 and NC 183, Linville Falls, Burke County
33	Facing north	West side of US 221, opposite junction with NC 183, McDowell County
34	Facing northwest	West side of US 221, opposite junction with NC 183, up hill behind #33, McDowell County
35	Facing southwest	Albert J. Franklin House: East side of US 221, 0.1 mile north of junction with NC 183, Linville Falls, Burke County
36	Facing east	David Franklin Cabin: North side of Laurel Lane, 0.05 miles west of junction with US 221, Linville Falls, Avery County

<i>PROPERTY NUMBER</i>	<i>DIRECTION OF VIEW</i>	<i>PROPERTY IDENTIFICATION (NAME AND/OR LOCATION)</i>
37	Facing north	West side of US 221, 0.3 miles south of junction with Blue Ridge Parkway overpass, Avery County
38	Facing west	West side of US 221, 0.25 miles south of junction with Blue Ridge Parkway overpass, Avery County
39	Facing southwest	Blue Ridge Parkway: Junction of US 221 and the Blue Ridge Parkway, Avery County

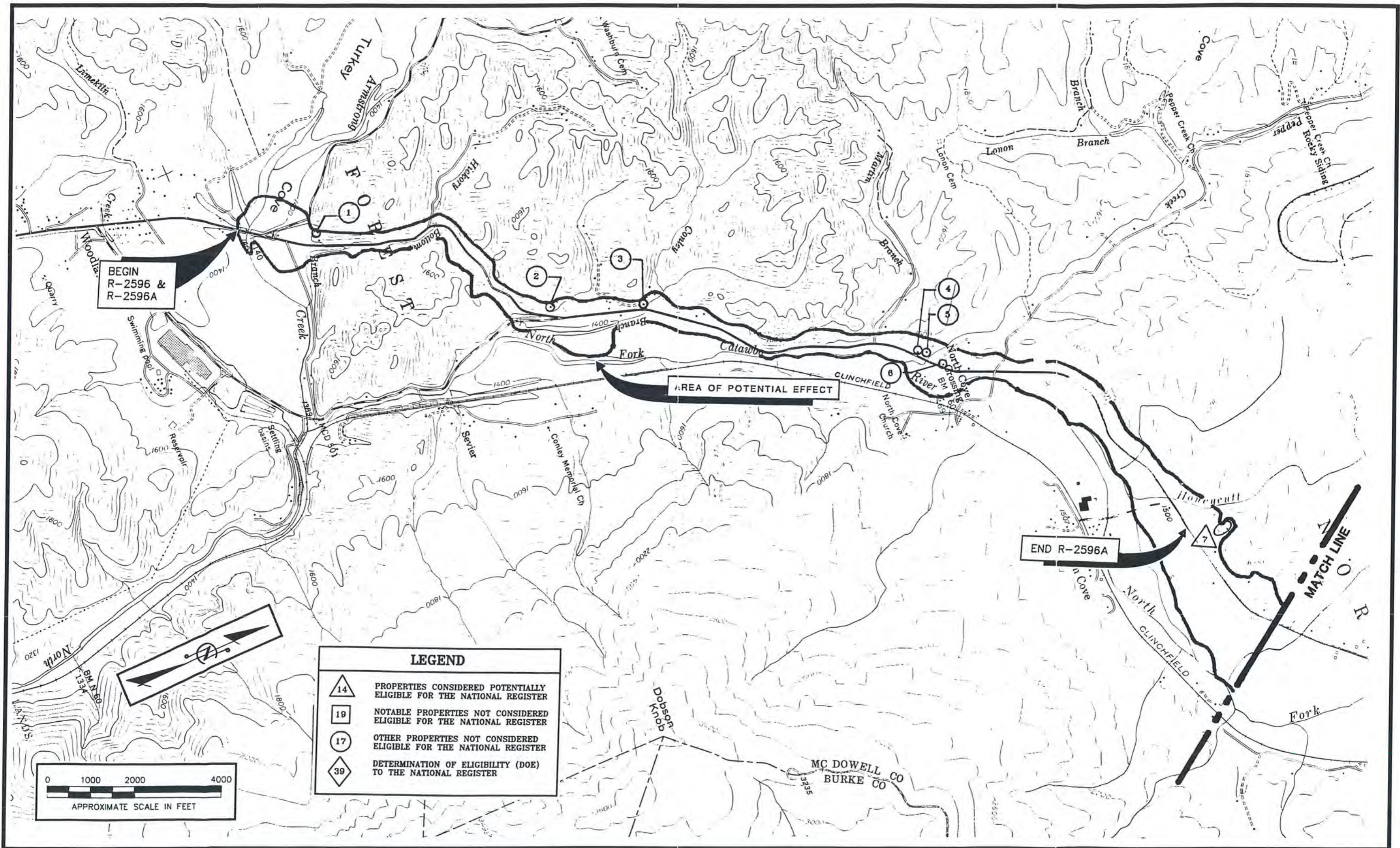


FIGURE 1a PHOTOGRAPHIC INVENTORY

(ASHFORD, LINVILLE FALLS AND LITTLE SWITZERLAND USGS TOPOGRAPHIC QUADRANGLE MAPS)

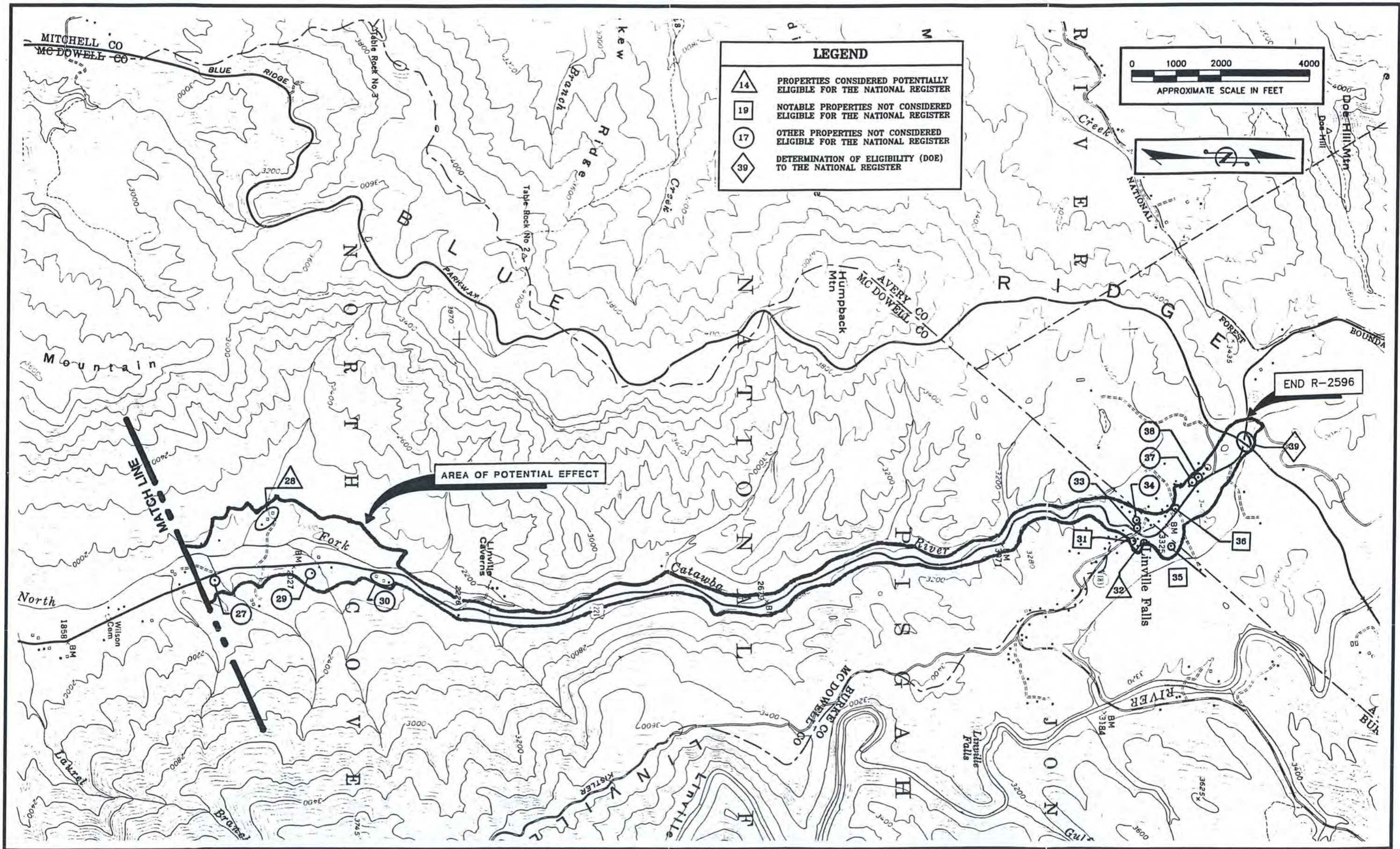


FIGURE 1c PHOTOGRAPHIC INVENTORY

(ASHFORD, LINVILLE FALLS AND LITTLE SWITZERLAND USGS TOPOGRAPHIC QUADRANGLE MAPS)



Property #1

WEST SIDE OF US 221,
0.2 MILES NORTH OF
JUNCTION WITH NC 226,
McDOWELL COUNTY



Property #2

WEST SIDE OF US 221,
OPPOSITE JUNCTION
WITH SR 1556,
McDOWELL COUNTY



Property #3

WEST SIDE OF US 221,
0.4 MILES NORTH OF
JUNCTION WITH SR 1556,
McDOWELL COUNTY



Property #4

WEST SIDE OF US 221,
0.2 MILES NORTH OF
JUNCTION WITH SR 1564,
McDOWELL COUNTY



Property #5

WEST SIDE OF US 221,
0.3 MILES SOUTH OF
JUNCTION WITH SR 1566,
McDOWELL COUNTY



Property #6

WEST SIDE OF US 221,
0.2 MILES SOUTH OF
JUNCTION WITH SR 1566,
McDOWELL COUNTY



Property #7

WILLIAM McCALL
FARMSTEAD: WEST SIDE
OF US 221, 0.2 MILES
NORTH OF JUNCTION
WITH SR 1568,
McDOWELL COUNTY



Property #8

WEST SIDE OF US 221,
0.8 MILES NORTH OF
JUNCTION WITH SR 1568,
McDOWELL COUNTY



Property #9

SAMUEL AND JOSEPH
GILKEY BROWN
FARMSTEAD, WEST
SIDE OF US 221,
1.0 MILE NORTH OF
JUNCTION WITH SR 1568,
McDOWELL COUNTY



Property #10

WEST SIDE OF US 221,
1.0 MILE NORTH OF
JUNCTION WITH SR 1578,
McDOWELL COUNTY



Property #11

WEST SIDE OF US 221,
1.1 MILES NORTH OF
JUNCTION WITH SR 1578,
McDOWELL COUNTY



Property #12

WEST SIDE OF US 221,
1.3 MILES NORTH OF
JUNCTION WITH SR 1578,
McDOWELL COUNTY



Property #13

HENRY SEAWELL BROWN
FARMSTEAD: EAST SIDE
OF US 221, 1.4 MILES
SOUTH OF JUNCTION
WITH SR 1560,
McDOWELL COUNTY



Property #14

CALDWELL-BROWN HOUSE:
EAST SIDE OF US 221,
1.1 MILES SOUTH OF
JUNCTION WITH 1560,
McDOWELL COUNTY



Property #15

WEST SIDE OF US 221,
1.0 MILE SOUTH OF
JUNCTION WITH SR 1560,
McDOWELL COUNTY



Property #16

EAST SIDE OF US 221,
1.0 MILE SOUTH OF
JUNCTION WITH SR 1560,
McDOWELL COUNTY



Property #17

WEST SIDE OF US 221,
0.85 MILES SOUTH OF
JUNCTION WITH SR 1560,
McDOWELL COUNTY



Property #18

McCALL-HEFNER HOUSE:
WEST SIDE OF US 221,
0.8 MILES SOUTH OF
JUNCTION WITH SR 1560,
McDOWELL COUNTY



Property #19

WISEMAN FAMILY
CORN MILL: EAST
SIDE OF US 221,
0.6 MILES SOUTH OF
JUNCTION WITH SR 1560,
McDOWELL COUNTY



Property #20

NORTH COVE FORK
BRIDGE: ON US 221
AT CROSSING OF
NORTH FORK OF THE
CATAWBA RIVER, 0.4
MILES SOUTH OF
JUNCTION WITH SR 1560,
McDOWELL COUNTY



Property #21

CLARENCE W. WISEMAN
STORE: WEST SIDE OF
US 221, 0.3 MILES
SOUTH OF JUNCTION
WITH SR 1560,
McDOWELL COUNTY



Property #22

OVER US 221, 0.2
MILES SOUTH OF
JUNCTION WITH SR 1560,
McDOWELL COUNTY



Property #23

SOUTH SIDE OF
SR 1560, 0.05 MILES
EAST OF JUNCTION
WITH US 221,
McDOWELL COUNTY



Property #24

CONCORD UNITED
METHODIST CHURCH:
EAST SIDE OF SR 1560,
0.2 MILES EAST OF
JUNCTION WITH US 221,
McDOWELL COUNTY



Property #25

**CONNELLY-PHILLIPS
HOUSE: EAST SIDE OF
US 221, 0.4 MILES
NORTH OF JUNCTION
WITH SR 1560,
McDOWELL COUNTY**



Property #26

**WEST SIDE OF US 221,
1.3 MILES NORTH OF
JUNCTION WITH SR 1560,
McDOWELL COUNTY**



Property #27

**EAST SIDE OF US 221,
1.5 MILES NORTH OF
JUNCTION WITH SR 1560,
McDOWELL COUNTY**



Property #28

**WILLIAM JEHU ENGLISH
FARMSTEAD: WEST SIDE
OF US 221, 1.7 MILES
NORTH OF JUNCTION
WITH SR 1560,
McDOWELL COUNTY**



Property #29

EAST SIDE OF US 221,
1.9 MILES NORTH OF
JUNCTION WITH SR 1560,
McDOWELL COUNTY



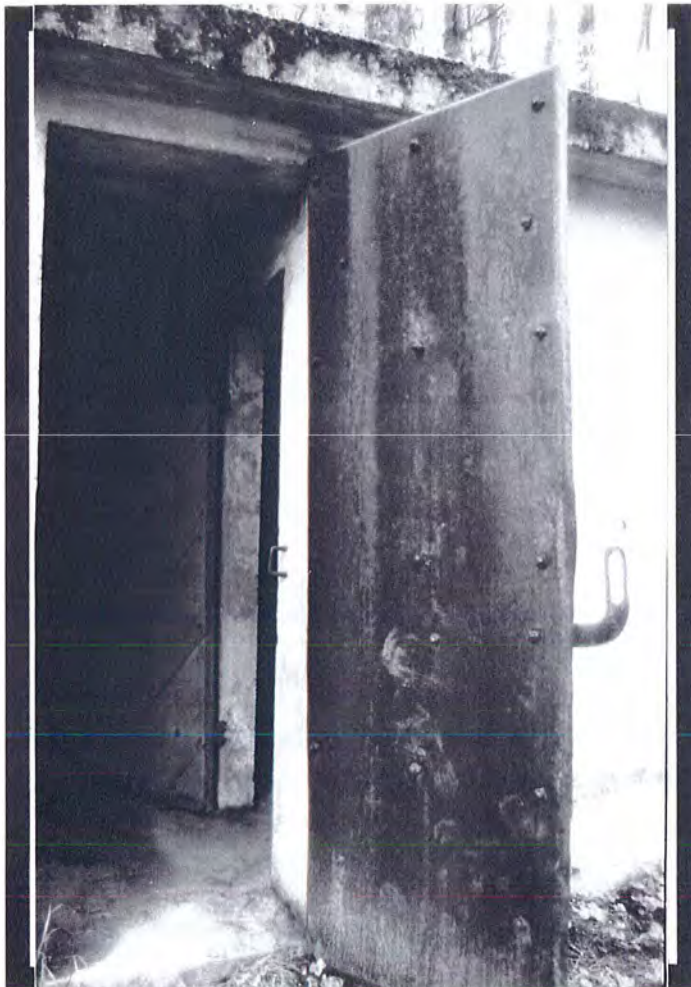
Property #30

EAST SIDE OF US 221,
2.2 MILES NORTH OF
JUNCTION WITH SR 1560,
McDOWELL COUNTY



Property #31

LINVILLE FALLS
POST OFFICE: NORTH
SIDE OF NC 183,
0.05 MILES EAST OF
JUNCTION WITH US 221,
LINVILLE FALLS,
BURKE COUNTY



Property #32

LINVILLE FALLS JAIL:
NORTHEAST CORNER OF
JUNCTION OF US 221
AND NC 183,
LINVILLE FALLS,
BURKE COUNTY



Property #33

WEST SIDE OF US 221,
OPPOSITE JUNCTION
WITH NC 183,
McDOWELL COUNTY



Property #34

WEST SIDE OF US 221,
OPPOSITE JUNCTION
WITH NC 183,
UP HILL BEHIND #33,
McDOWELL COUNTY



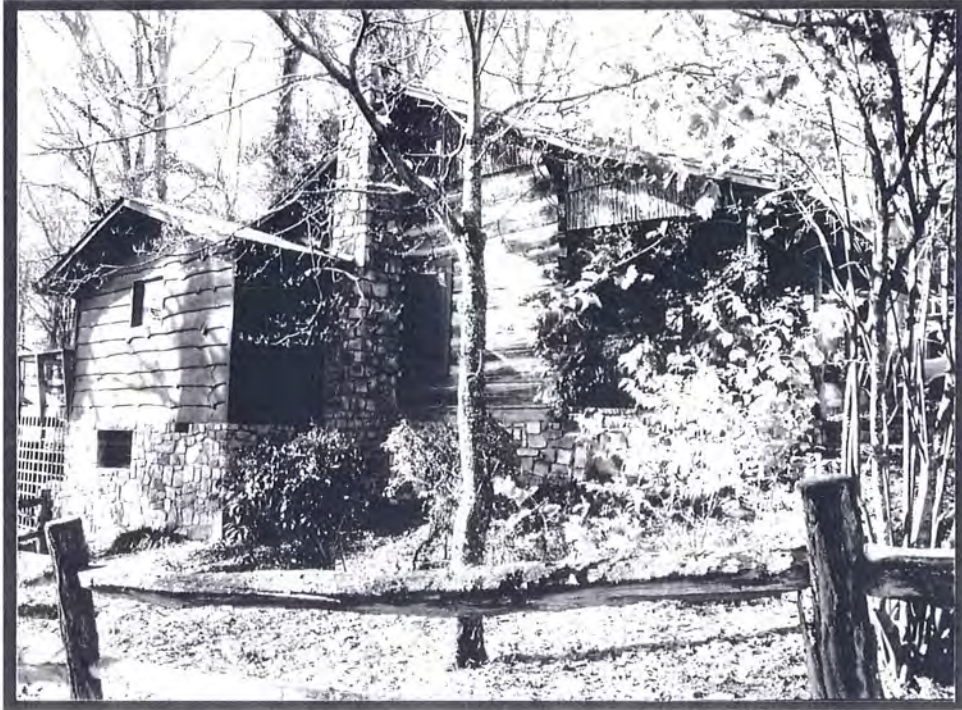
Property #35

**ALBERT J. FRANKLIN
HOUSE: EAST SIDE OF
US 221, 0.1 MILE
NORTH OF JUNCTION
WITH NC 183,
LINVILLE FALLS,
BURKE COUNTY**



Property #36

**DAVID FRANKLIN CABIN:
NORTH SIDE OF
LAUREL LANE, 0.05
MILES WEST OF
JUNCTION WITH US 221,
LINVILLE FALLS,
AVERY COUNTY**



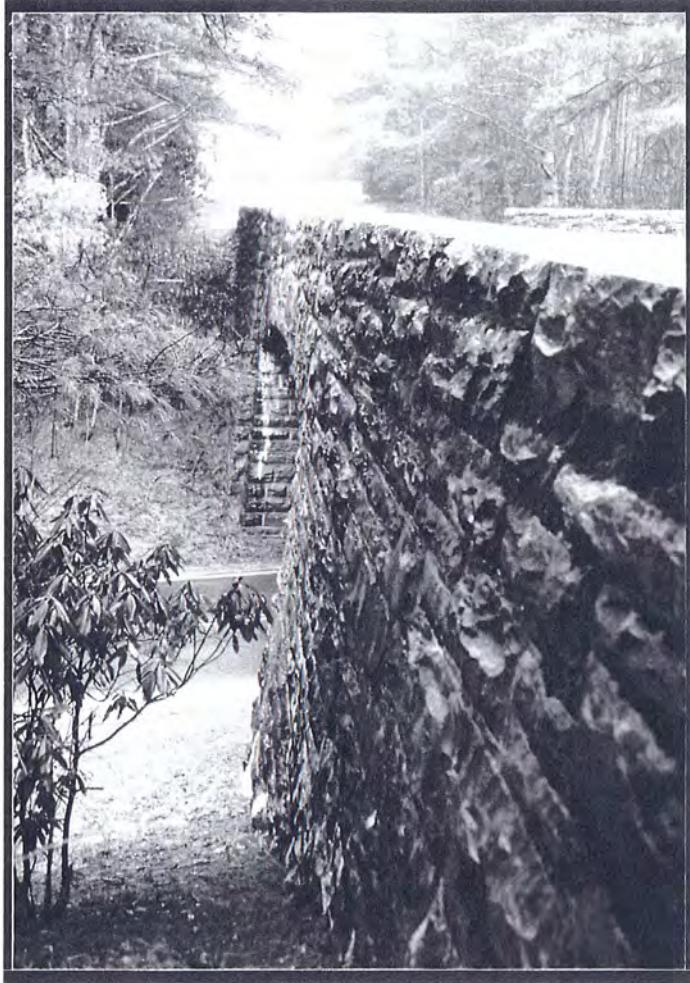
Property #37

WEST SIDE OF US 221,
0.3 MILES SOUTH OF
JUNCTION WITH BLUE
RIDGE PARKWAY
OVERPASS,
AVERY COUNTY



Property #38

WEST SIDE OF US 221,
0.25 MILES SOUTH OF
JUNCTION WITH BLUE
RIDGE PARKWAY
OVERPASS,
AVERY COUNTY



Property #39

**BLUE RIDGE PARKWAY:
JUNCTION OF US 221
AND THE BLUE RIDGE
PARKWAY, AVERY COUNTY**