

**PHOTOGRAPHIC INVENTORY OF  
AN HISTORIC ARCHITECTURAL SURVEY REPORT  
FOR  
WIDENING NC 11 FROM NC 24  
EAST OF KENANSVILLE TO NORTH OF PINK HILL  
TO  
FOUR LANES WITH A BYPASS OF PINK HILL  
DUPLIN AND LENOIR COUNTIES, NORTH CAROLINA  
TIP NO. R-2204  
STATE PROJECT NO. 8.1240901  
FEDERAL AID PROJECT NO. SR-3707(8)**

**PHASE II**

**Prepared By:  
Marvin A. Brown  
Suzanne S. Pickens  
James R. Snodgrass**

**GREINER, INC.  
4630 Paragon Park Road  
Raleigh, North Carolina 27604-3174  
(919) 876-2760**

**Prepared For:  
  
THE FEDERAL HIGHWAY ADMINISTRATION  
AND  
THE NORTH CAROLINA DEPARTMENT OF TRANSPORTATION**

**AUGUST 1993**

**PHOTOGRAPHIC INVENTORY OF  
AN HISTORIC ARCHITECTURAL SURVEY  
FOR  
WIDENING NC 11 FROM NC 24  
EAST OF KENANSVILLE TO NORTH OF PINK HILL  
TO  
FOUR LANES WITH A BYPASS OF PINK HILL  
DUPLIN AND LENOIR COUNTIES, NORTH CAROLINA  
TIP NO. R-2204  
STATE PROJECT NO. 8.1240901  
FEDERAL AID PROJECT NO. SR-3707 (8)**

**Prepared By:  
Marvin A. Brown  
Suzanne S. Pickens  
James R. Snodgrass  
August 1993**

**GREINER, INC.  
4630 Paragon Park Road  
Raleigh, North Carolina 27604-3174  
(919) 876-2760**

**Prepared For:  
The Federal Highway Administration  
and  
The North Carolina Department of Transportation**

**Copyright © 1993 Greiner, Inc.**

**PHOTOGRAPHIC INVENTORY  
FOR WIDENING OF NC 11  
IN  
DUPLIN AND LENOIR COUNTIES  
TIP NO. R-2204  
STATE PROJECT NO. 8.1240901  
FEDERAL AID PROJECT NO. SR-3707 (8)**

<u>PROPERTY #</u>	<u>PROPERTY IDENTIFICATION (NAME AND/OR LOCATION)</u>
1	N side of Lenoir County SR 1110, 0.3 miles W of NC 11
2	Pink Hill Historic District - N side of Clay Street, E of Central Avenue
3	Pink Hill Historic District - NW corner of junction of Clay and Front Street
4	Pink Hill Historic District - NE corner of junction of Clay and Front Street
5	Pink Hill Historic District - N side of Clay Street, E of Front Street
6	Pink Hill Historic District - N side of Clay Street, E of Front Street
7	Pink Hill Historic District - N side of Clay Street, E of Front Street
8	Pink Hill Historic District - N side of Clay Street, E of Front Street
9	Pink Hill Historic District - SE corner of junction of Clay and Front Street
10	Pink Hill Historic District - W side of Front Street, N of Broadway Street
11	Pink Hill Historic District - NE corner of junction of Broadway and Front Street
12	Pink Hill Historic District - NW corner of junction of Broadway and Front Street
13	Pink Hill Historic District - NE corner of junction of Broadway Street and Central Avenue
14	Pink Hill Historic District - NW corner of junction of Broadway Street and Central Avenue
15	Pink Hill Historic District - N side of Broadway Street, E of Pine Street
16	Pink Hill Historic District - NE corner of junction of Broadway and Pine Street

<u>PROPERTY #</u>	<u>PROPERTY IDENTIFICATION (NAME AND/OR LOCATION)</u>
17	Pink Hill Historic District - NW corner of junction of Broadway and Pine Street
18	Pink Hill Historic District - SE corner of junction of Broadway and Turner Street
19	Pink Hill Historic District - NW corner of junction of Broadway and Turner Street
20	Pink Hill Historic District - N side of Broadway Street, W of Turner Street
21	Pink Hill Historic District - N side of Broadway Street, W of Lee Street
22	Pink Hill Historic District - N side of Broadway Street, W of Lee Street
23	Pink Hill Historic District - SW corner of Broadway and Lee Street
24	Pink Hill Historic District - SE corner of Broadway and Lee Street
25	Pink Hill Historic District - S side of Broadway Street, W of Turner Street
26	Pink Hill Historic District - SW corner of junction of Broadway and Pine Street
27 and 28	Pink Hill Historic District - S side of Broadway Street, E of Central Avenue
29 and 30	Pink Hill Historic District - S side of Broadway Street, W of Front Street
31	Pink Hill Historic District - E side of Jones Street, N of College Street
32	Pink Hill Historic District - E side of Jones Street, N of College Street
33	Pink Hill Historic District - E side of Jones Street, N of College Street
34	Pink Hill Historic District - W side of Jones Street, N of College Street
35	Pink Hill Historic District - S side of Walnut Street, E of Central Avenue
36	Pink Hill Historic District - S side of Walnut Street, E of Central Avenue
37	Pink Hill Historic District - SE corner of junction of Walnut Street and Central Avenue
38	Pink Hill Historic District - NE corner of junction of Walnut and Pine Street
39	Pink Hill Historic District - SW corner of junction of Walnut and Pine Street

<u>PROPERTY #</u>	<u>PROPERTY IDENTIFICATION (NAME AND/OR LOCATION)</u>
40	Pink Hill Historic District - N side of Walnut Street, E of Pine Street
41	Pink Hill Historic District - SE corner of junction of Walnut and Turner Street
42	Pink Hill Historic District - NW corner of junction of Walnut and Turner Street
43	Pink Hill Historic District - W side of Turner Street, N of Walnut Street
44	Pink Hill Historic District - S side of Walnut Street, E of Lee Street
45	Pink Hill Historic District - W side of Turner Street, S of College Street
46	Pink Hill Historic District - S side of Walnut Street, between Pine Street and Central Avenue
48	Hugh Edgar Maxwell House - N side of SR 1551, 0.1 mile E of SR 1549
49	Hugh Maxwell House - N side of SR 1551, opposite junction with SR 1549
50	Hebron Church - N side of SR 1551, 0.15 miles E of SR 1554
51	Gaston Kornegay House - W side of NC 111, opposite junction with NC 11
53	Kornegay House - S side of NC 11, opposite junction with SR 1004
54	George E. Houston House - N side of SR 1380, 0.1 mile W of NC 11
56	Grady House - N side of NC 11, 0.2 miles W of SR 1516
57	Wesley Chapel - NE corner of junction of NC 11 and SR 1516
59	B.F. Grady School - N side of NC 11, 0.4 miles W of NC 111
60	Greek Revival Farmhouse - Up 0.15 mile dirt lane, N side of NC 11, 0.3 miles E of SR 1300
61	Packhouse - N side of NC 11, 0.35 miles W of SR 1300
62	Miller Family Cemetery - End of Goshen Trailer Park Road, S side of NC 11, 0.3 miles W of SR 1300
63	John Maxwell House - Up 0.1 mile dirt lane, N side of NC 11, 0.6 miles E of SR 1554
65	Miller Family House - Up 0.1 mile dirt lane, S side of NC 11, 0.4 miles W of SR 1300

<u>PROPERTY #</u>	<u>PROPERTY IDENTIFICATION (NAME AND/OR LOCATION)</u>
66	NW corner of junction of NC 11 and Lenoir County SR 1110
67	N side of NC 11, 0.2 miles W of SR 1554
68	S side of NC 11, 1.2 miles E of SR 1554
69	N side of NC 11, 0.6 miles E of SR 1554
70	S side of NC 11, 0.3 miles W of SR 1707
71	N side of NC 11, 0.3 miles W of SR 1707
72	N side of NC 11, 0.6 miles E of NC 111
73	S side of NC 11, 0.1 mile E of NC 111
74	NE corner of junction of NC 11 and SR 1501
75	S side of NC 11, opposite junction with SR 1501
76	N side of NC 11, 0.8 miles E of SR 1517

**NB:** Gaps in the above numbering sequence represent properties which were recorded by Greiner, Inc. during its reconnaissance survey of the general study area and subsequently determined to be outside of the project's Area of Potential Effect

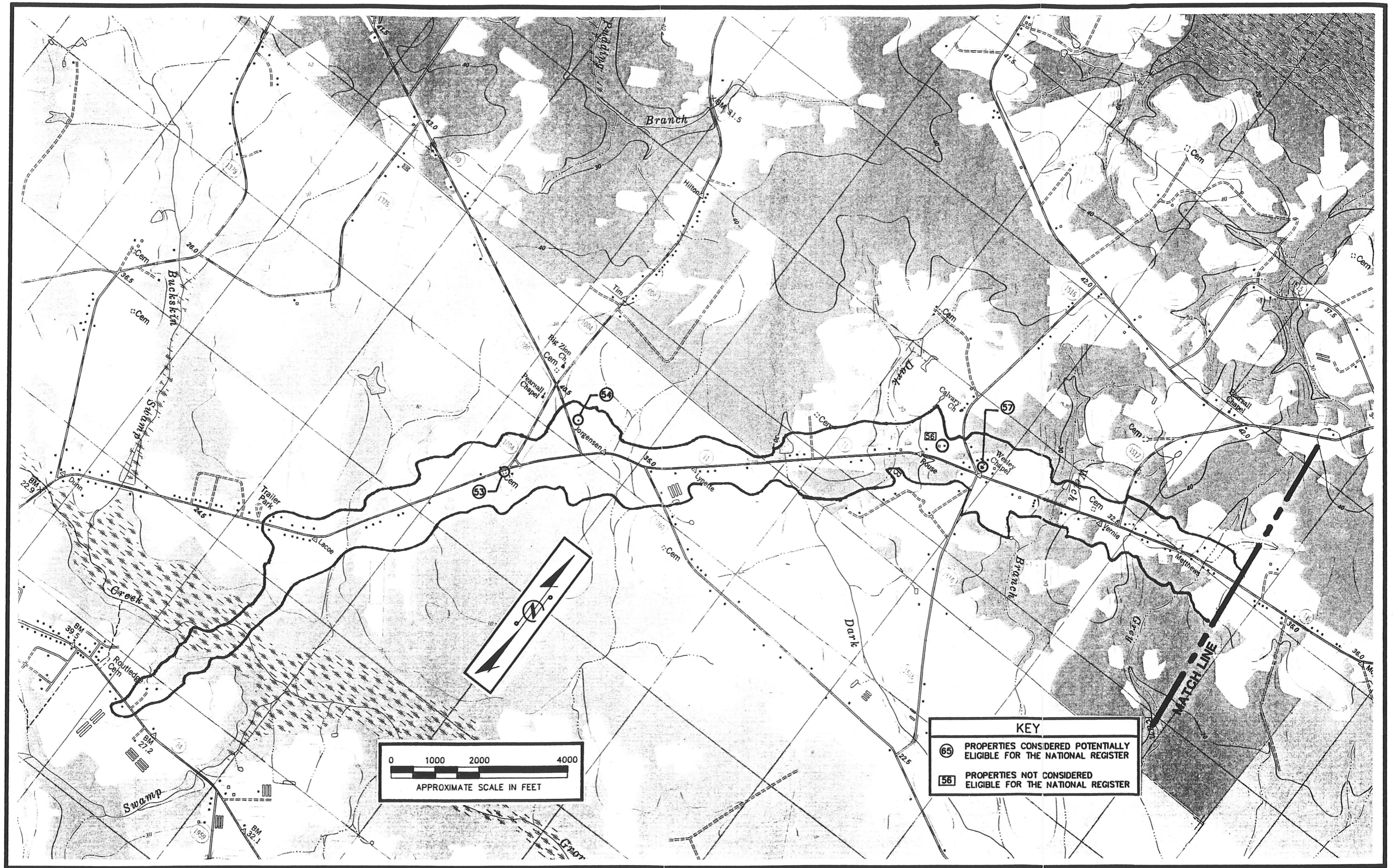


Figure 1a Photographic Inventory, Property Locations  
 (Kenansville, Summerlins Crossroads, Albertson, and Pink Hill USGS Topographic Quadrangle Maps)

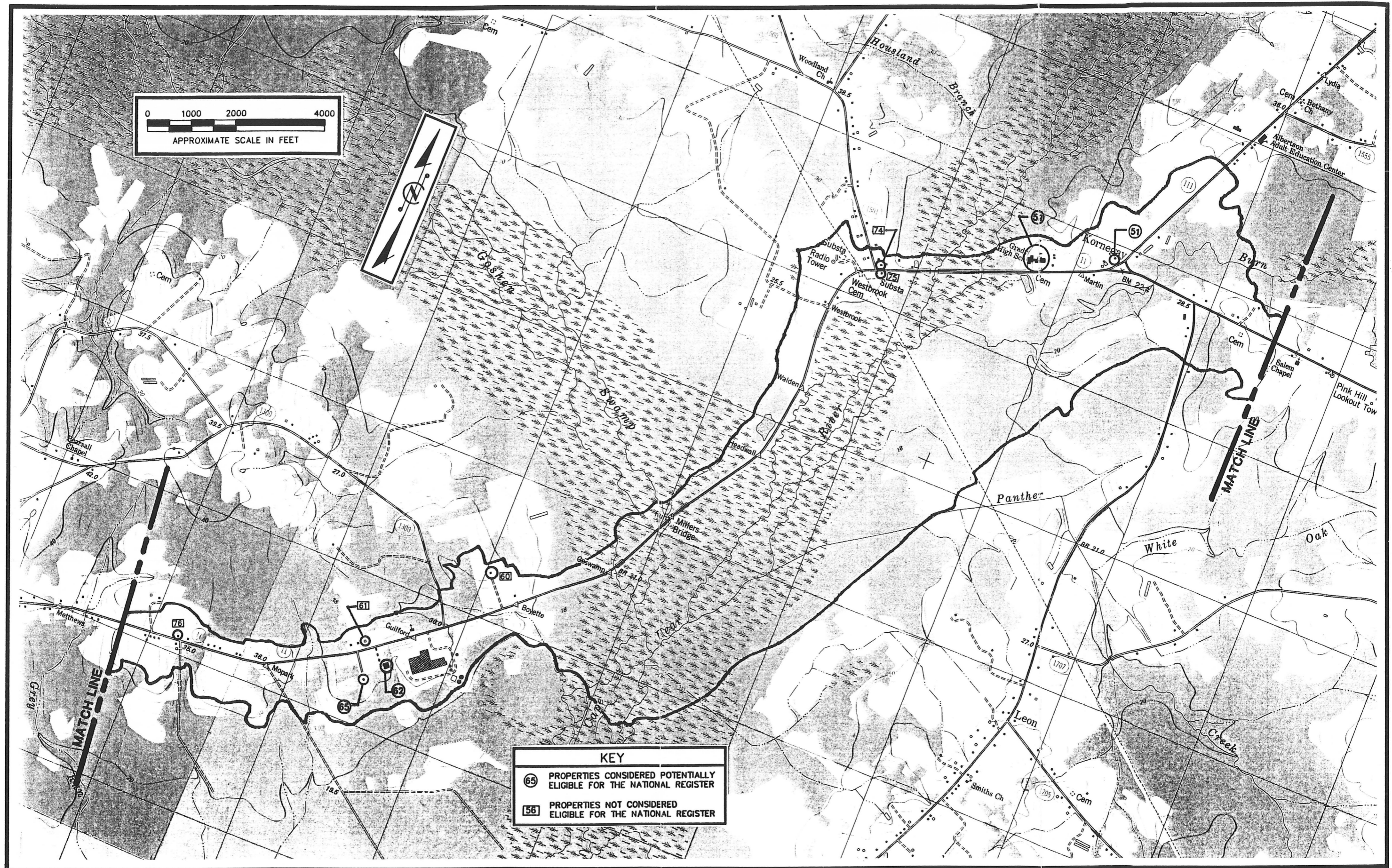


Figure 1b Photographic Inventory, Property Locations (Kenansville, Summerlins Crossroads, Albertson, and Pink Hill USGS Topographic Quadrangle Maps)



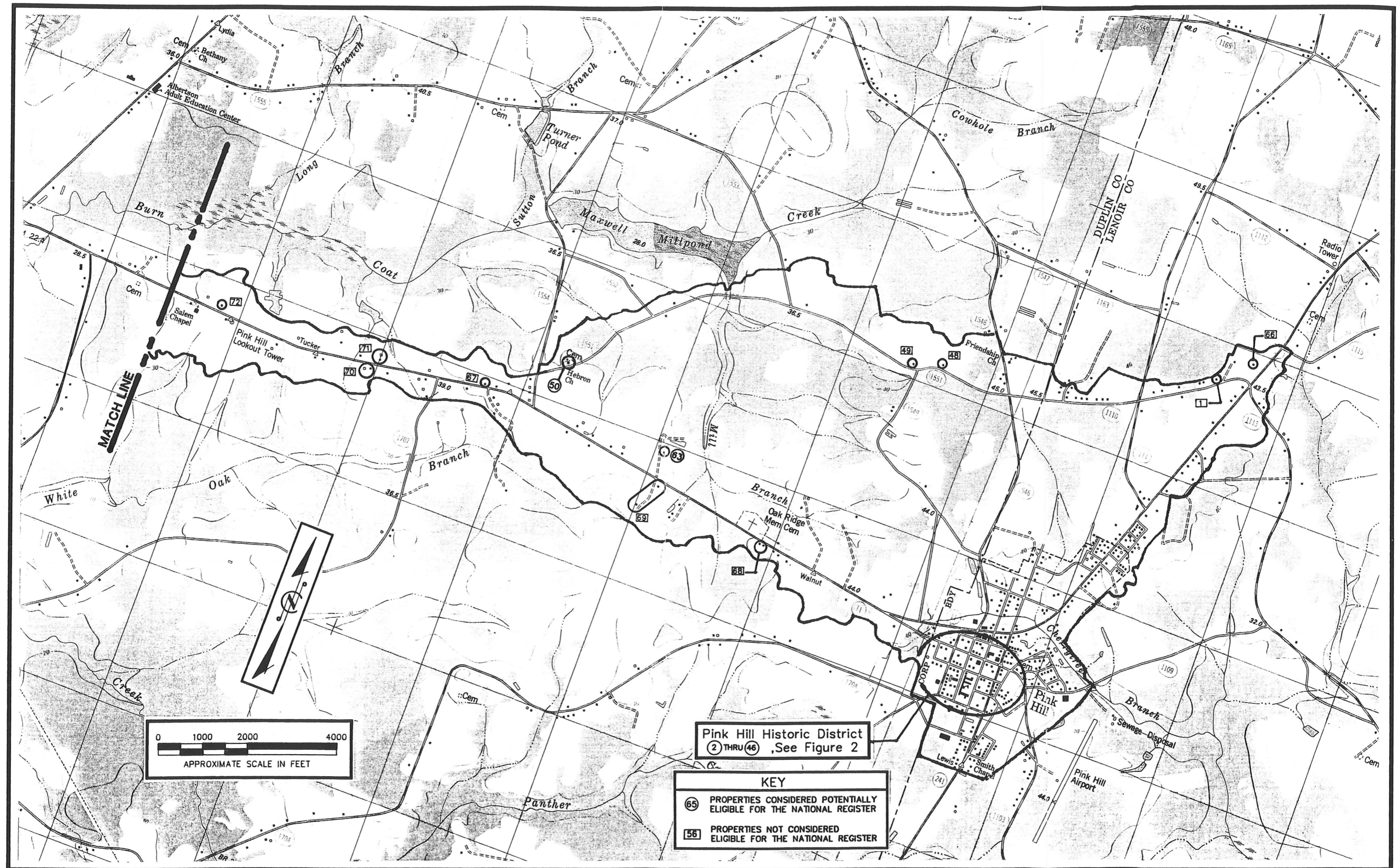


Figure 1c Photographic Inventory, Property Locations  
 (Kenansville, Summerlins Crossroads, Albertson, and Pink Hill USGS Topographic Quadrangle Maps)

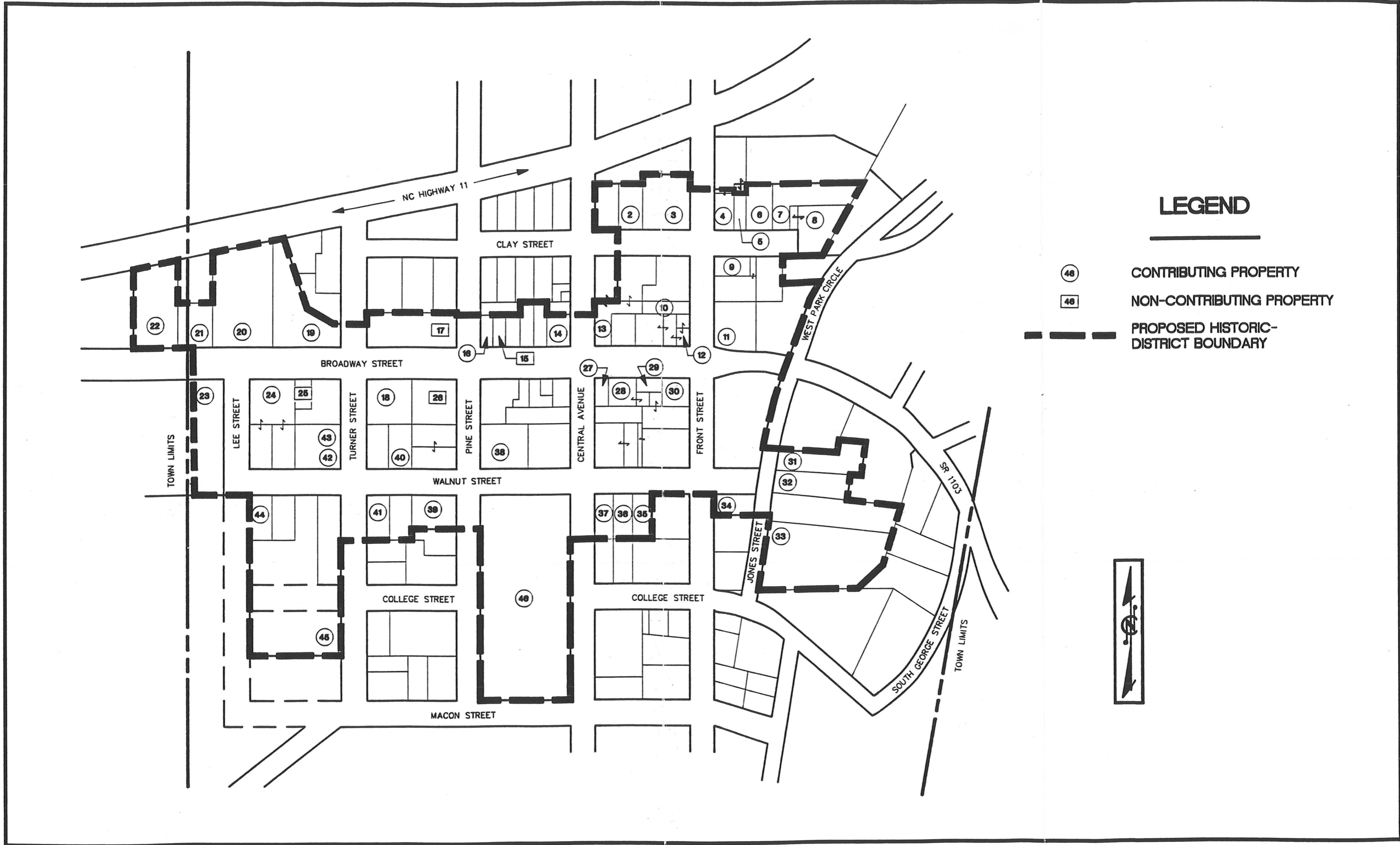


Figure 2 Photographic Inventory, Property Locations  
 (Source: Pink Hill, Lenoir Co., N.C. Property Maps)

NO SCALE



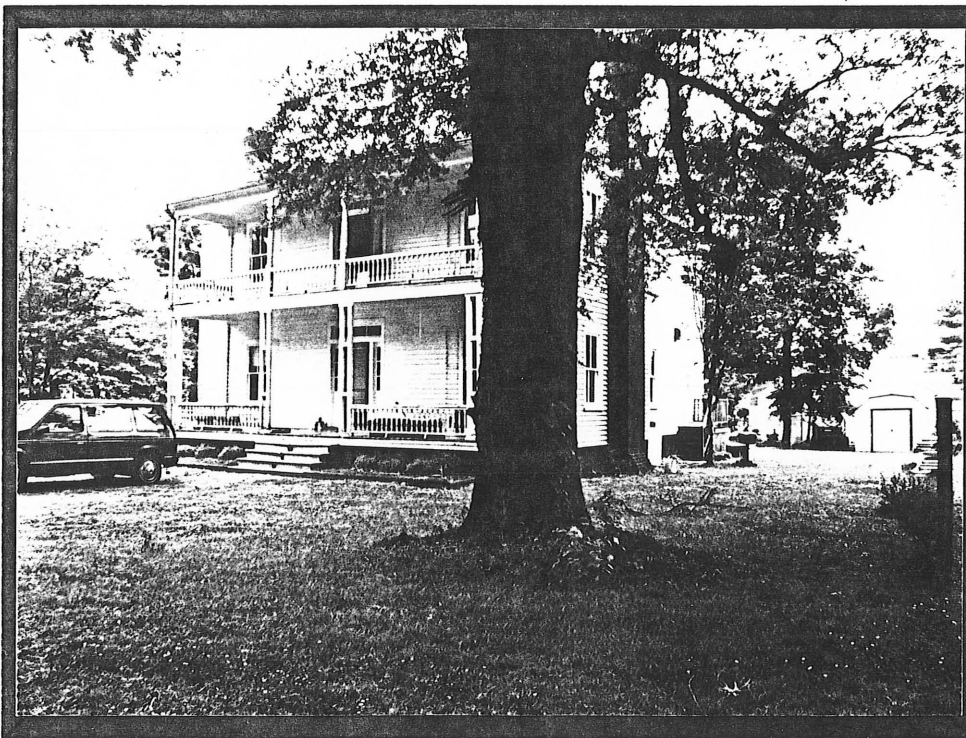
**PROPERTY #1**  
N Side of Lenoir  
County SR 1110, 0.3  
Miles W of NC 11



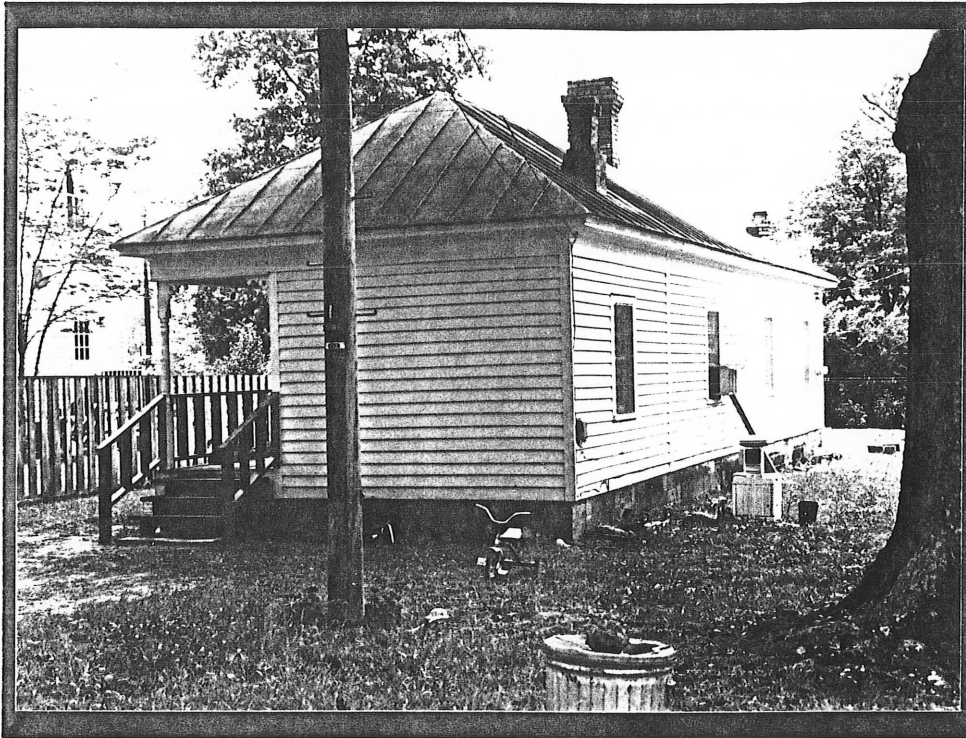
**PROPERTY #2**  
Pink Hill Historic  
District—N Side of  
Clay Street, E of  
Central Avenue



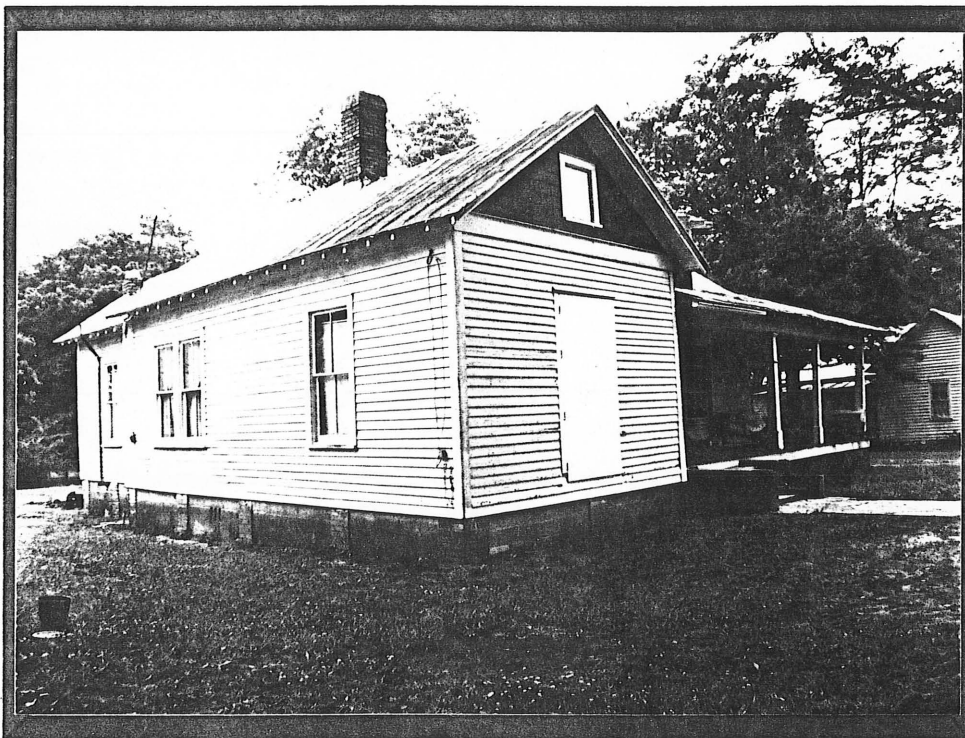
**PROPERTY #3**  
Pink Hill Historic  
District—NW Corner  
of Junction of Clay  
and Front Street



**PROPERTY #4**  
Pink Hill Historic  
District—NE Corner  
of Junction of Clay  
and Front Street



**PROPERTY #5**  
Pink Hill Historic  
District—N Side of  
Clay Street, E of  
Front Street



**PROPERTY #6**  
Pink Hill Historic  
District—N Side of  
Clay Street, E of  
Front Street



**PROPERTY #7**  
Pink Hill Historic  
District—N Side of  
Clay Street, E of  
Front Street



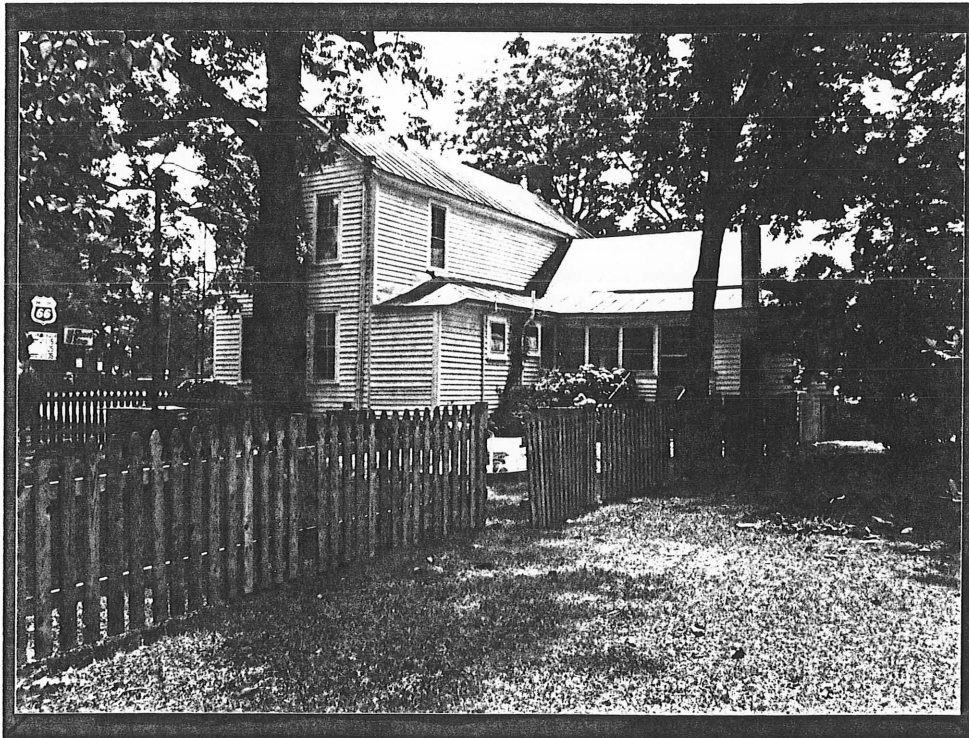
**PROPERTY #8**  
Pink Hill Historic  
District—N Side of  
Clay Street, E of  
Front Street



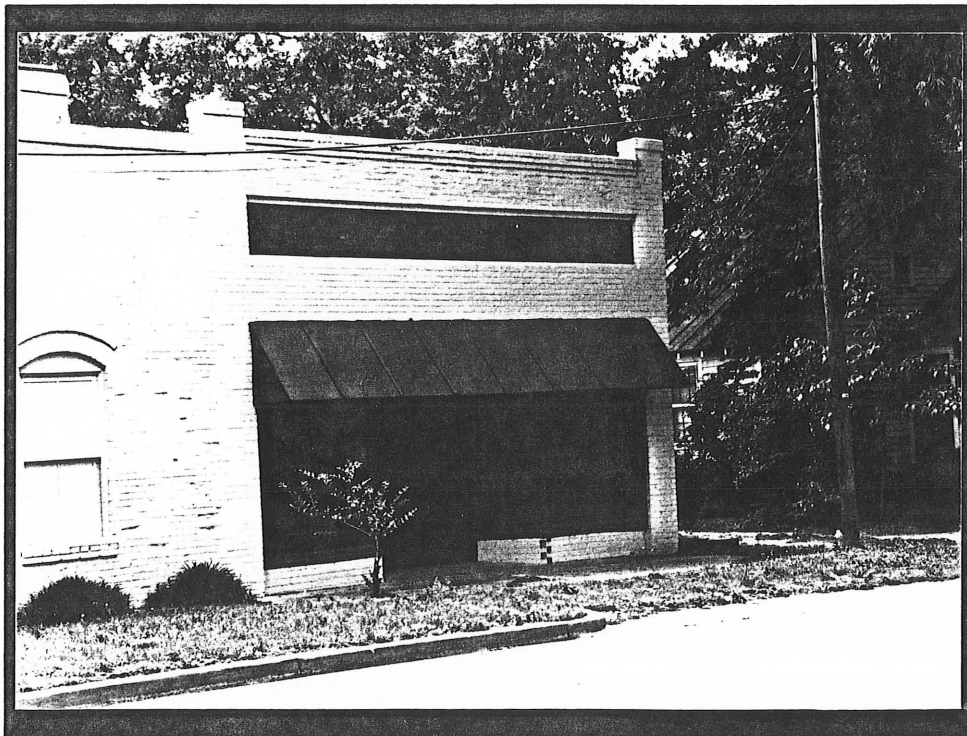
**PROPERTY #9**  
Pink Hill Historic  
District—SE Corner  
of Junction of Clay  
and Front Street



**PROPERTY #10**  
Pink Hill Historic  
District—W Side of  
Front Street, N of  
Broadway Street

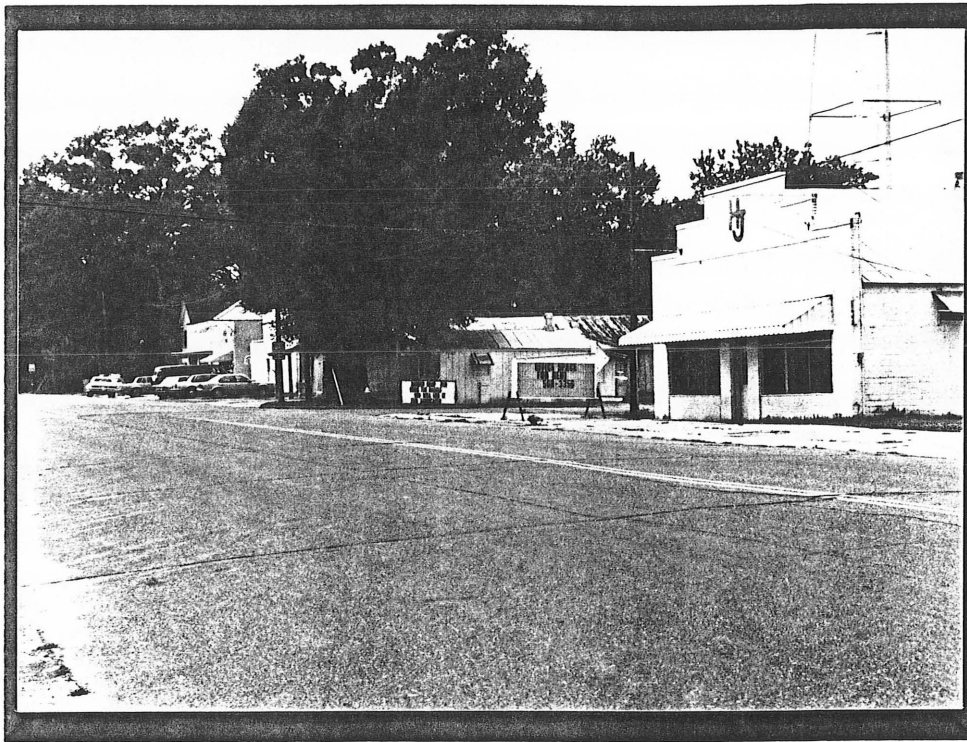


**PROPERTY #11**  
Pink Hill Historic  
District—NE Corner  
of Junction of  
Broadway and  
Front Street

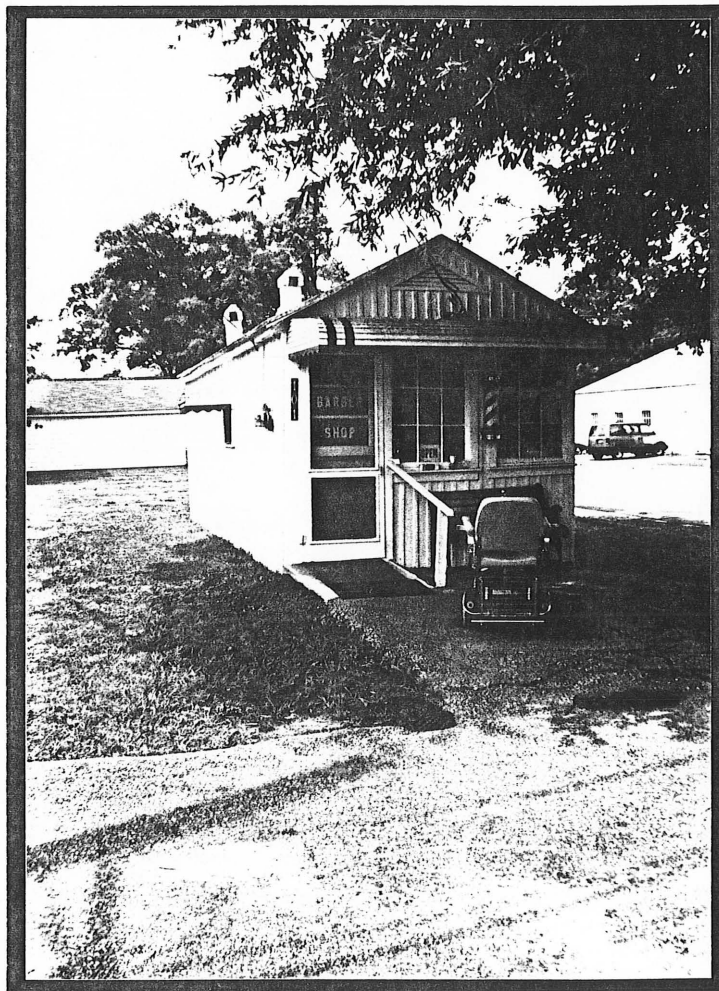


**PROPERTY #12**  
Pink Hill Historic  
District—NW Corner  
of Junction of  
Broadway and  
Front Street





**PROPERTY #13**  
Pink Hill Historic  
District—NE Corner  
of Junction of  
Broadway Street  
and Central Avenue



**PROPERTY #14**  
Pink Hill Historic  
District—NW Corner  
of Junction of  
Broadway Street  
and Central Avenue



**PROPERTY #15**  
Pink Hill Historic  
District—N Side of  
Broadway Street,  
E of Pine Street



**PROPERTY #16**  
Pink Hill Historic  
District—NE Corner  
of Broadway and  
Pine Street



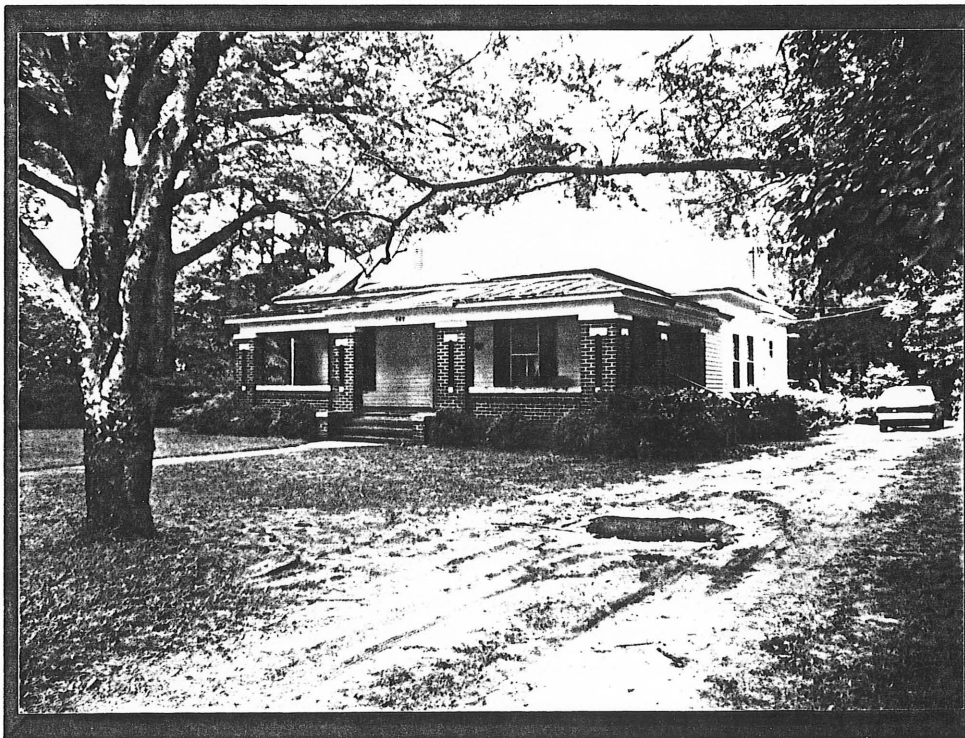
**PROPERTY #17**  
Pink Hill Historic  
District—NW Corner  
of Junction of  
Broadway and  
Pine Street



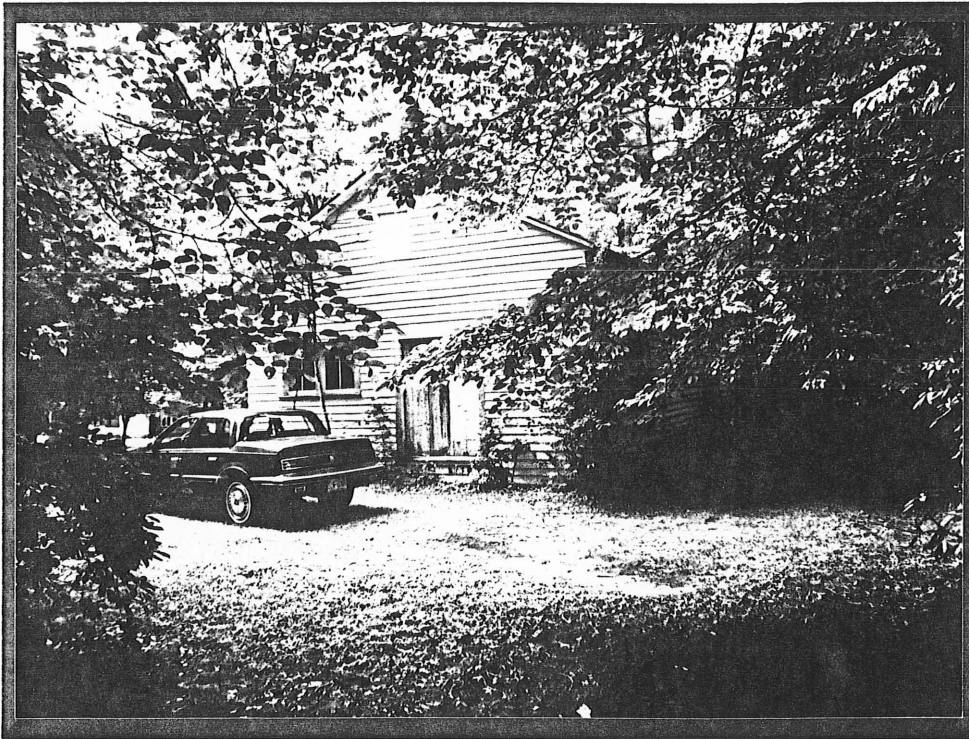
**PROPERTY #18**  
Pink Hill Historic  
District—SE Corner  
of Junction of  
Broadway and  
Turner Street



**PROPERTY #19**  
Pink Hill Historic  
District—NW Corner  
of Junction of  
Broadway and  
Turner Street



**PROPERTY #20**  
Pink Hill Historic  
District—N Side of  
Broadway Street, West  
of Turner Street



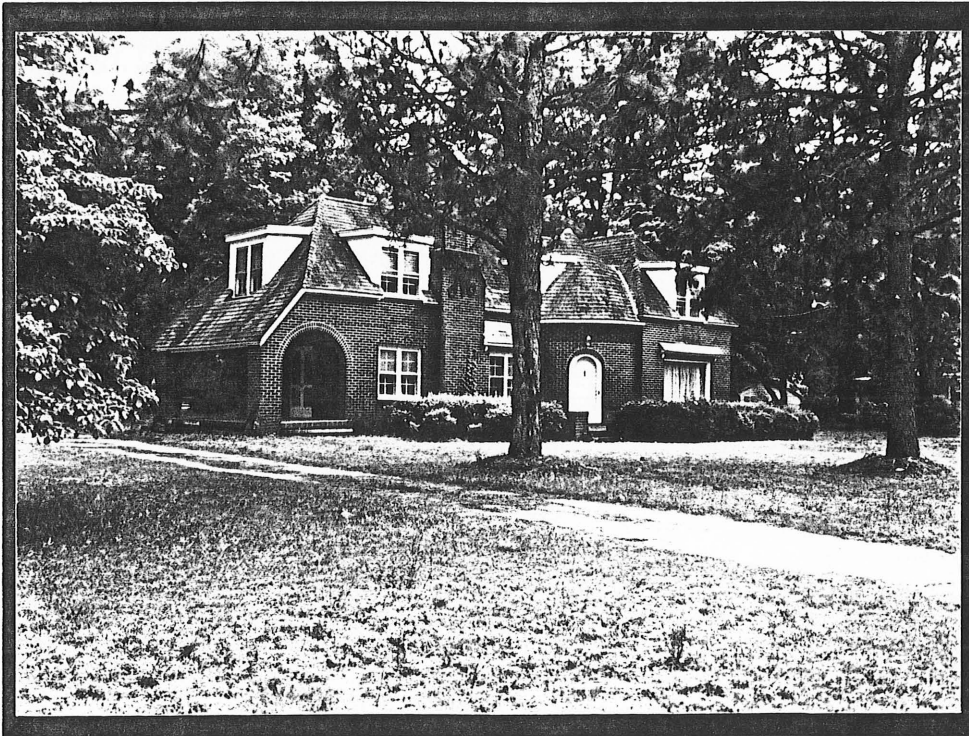
**PROPERTY #21**  
Pink Hill Historic  
District—N Side of  
Broadway Street,  
W of Lee Street



**PROPERTY #22**  
Pink Hill Historic  
District—N Side of  
Broadway Street,  
W of Lee Street



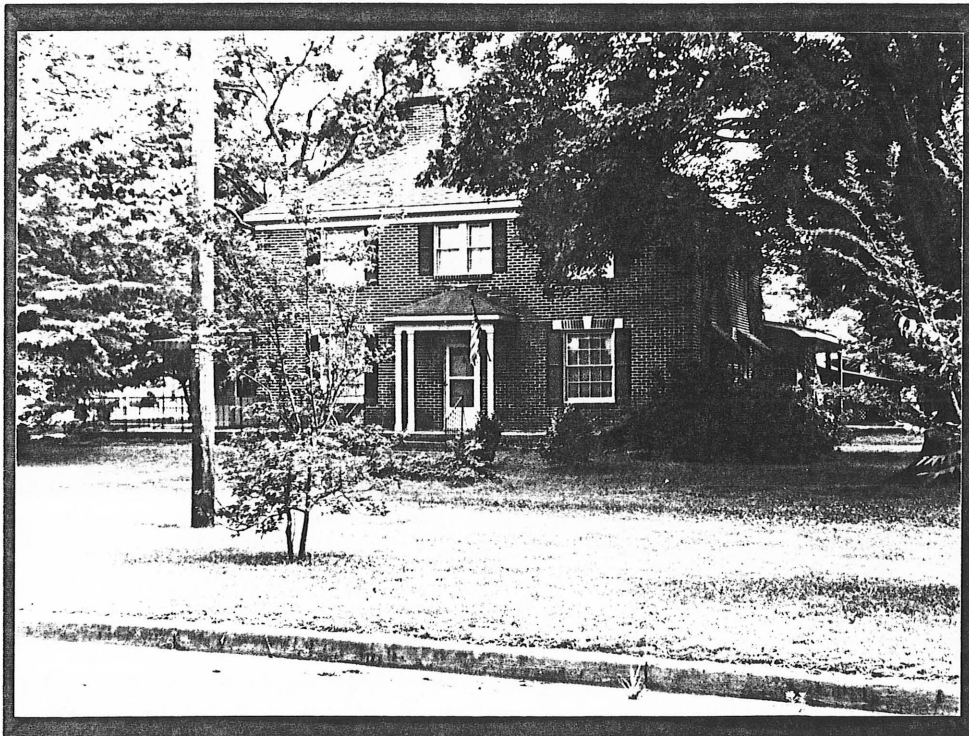
**PROPERTY #23**  
Pink Hill Historic  
District—SW Corner  
of Broadway and  
Lee Street



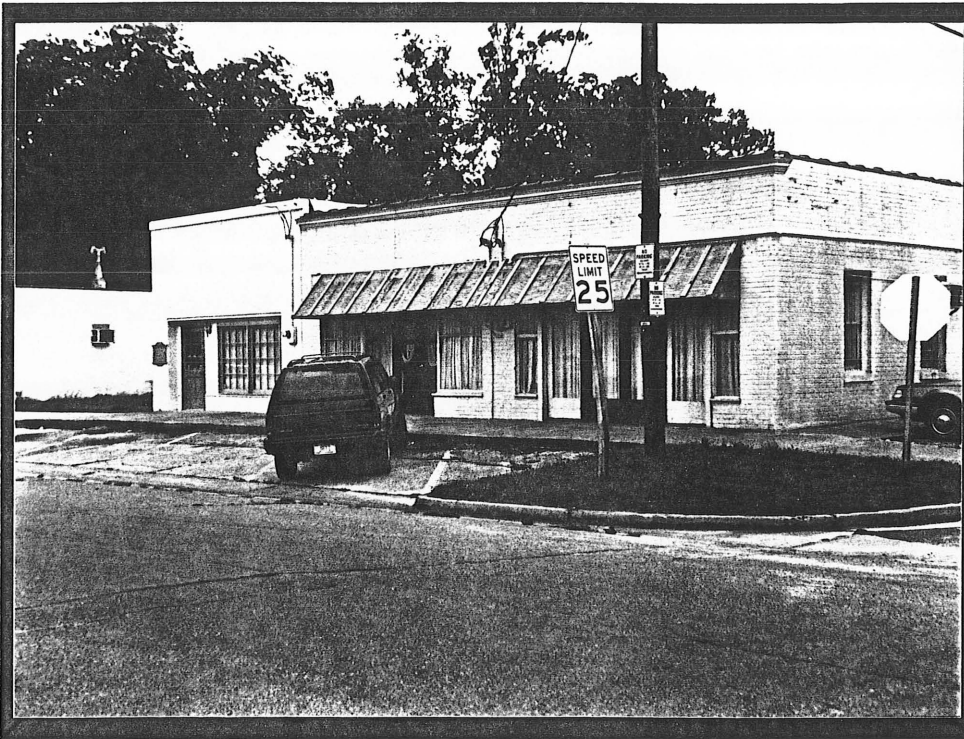
**PROPERTY #24**  
Pink Hill Historic  
District—SE Corner  
of Broadway and  
Lee Street



**PROPERTY #25**  
Pink Hill Historic  
District—S Side of  
Broadway Street,  
W of Turner Street



**PROPERTY #26**  
Pink Hill Historic  
District—SW Corner  
of Junction of  
Broadway and  
Pine Street



**PROPERTIES #27,#28**

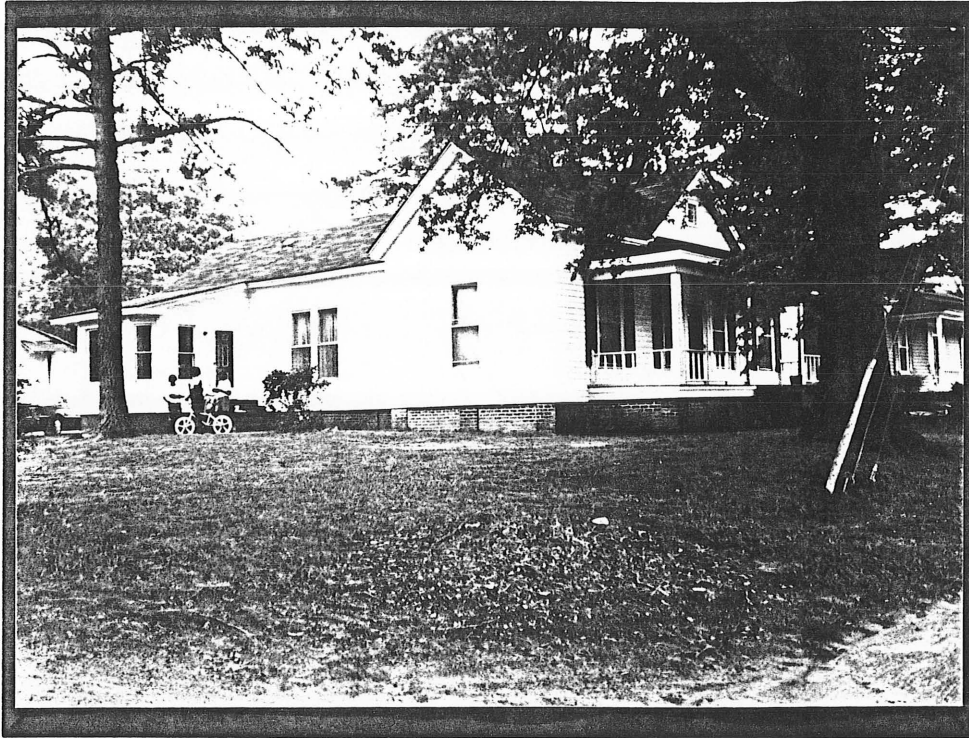
**Pink Hill Historic  
District-S Side of  
Broadway Street,  
E of Central Avenue**



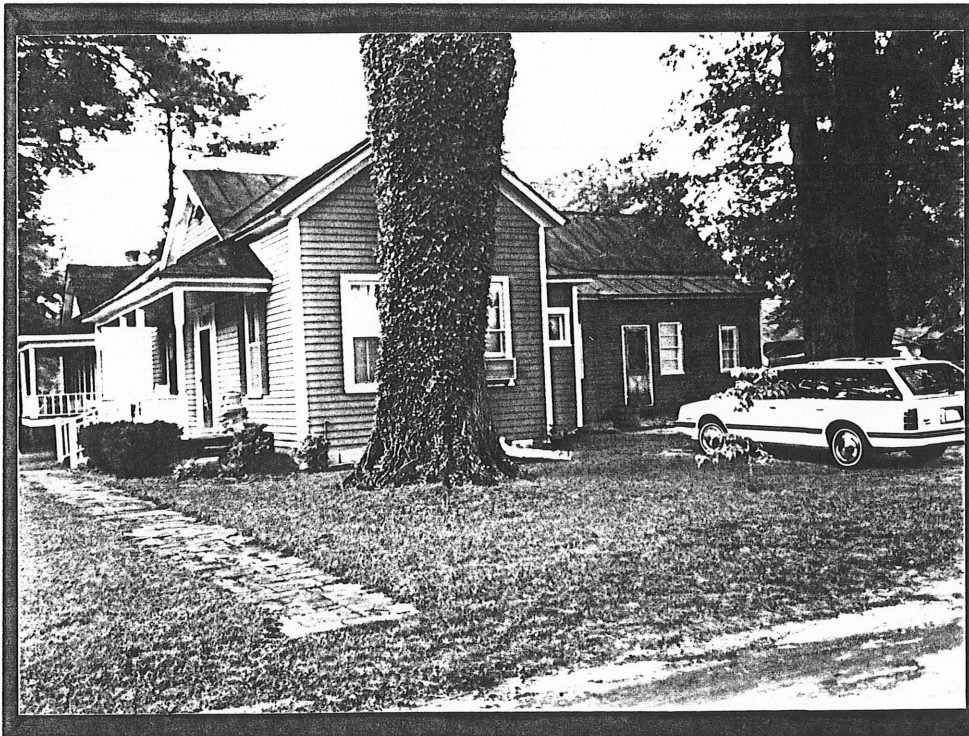
**PROPERTIES #29,#30**

**Pink Hill Historic  
District-S Side of  
Broadway Street,  
W of Front Street**





**PROPERTY #31**  
Pink Hill Historic  
District—E Side of  
Jones Street, N of  
College Street



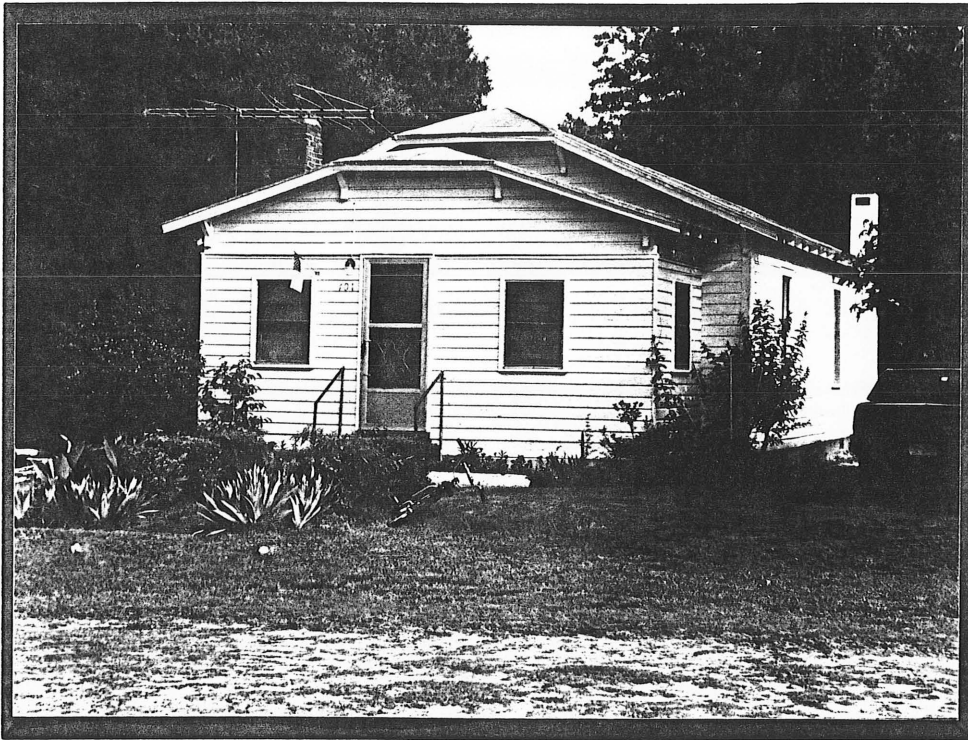
**PROPERTY #32**  
Pink Hill Historic  
District—E Side of  
Jones Street, N of  
College Street



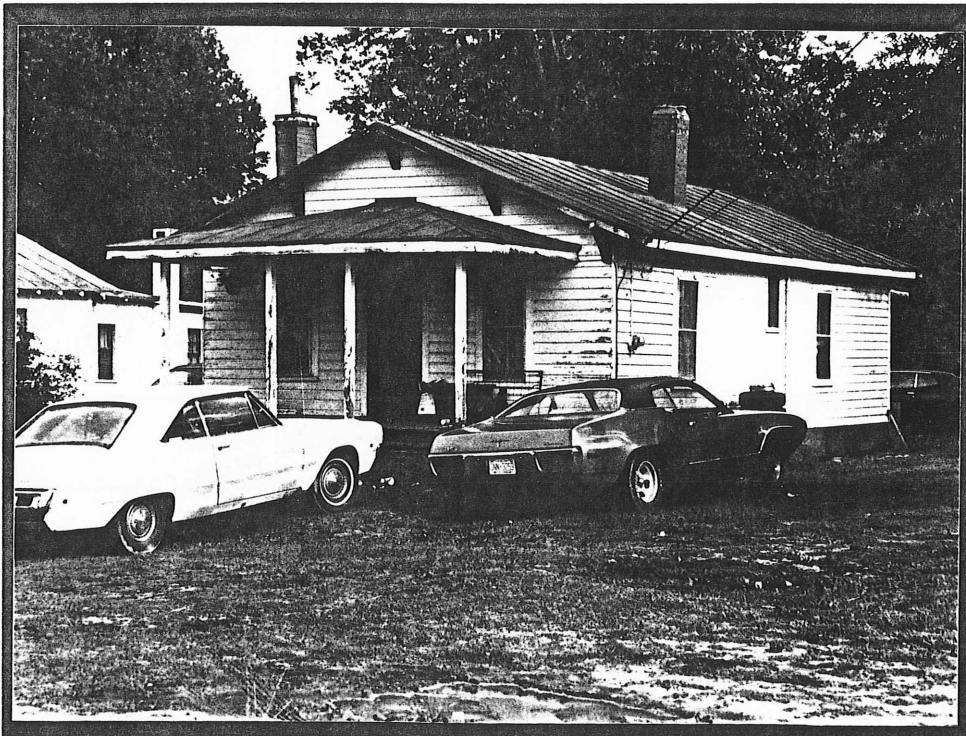
**PROPERTY #33**  
Pink Hill Historic  
District—E Side of  
Jones Street,  
N of College Street



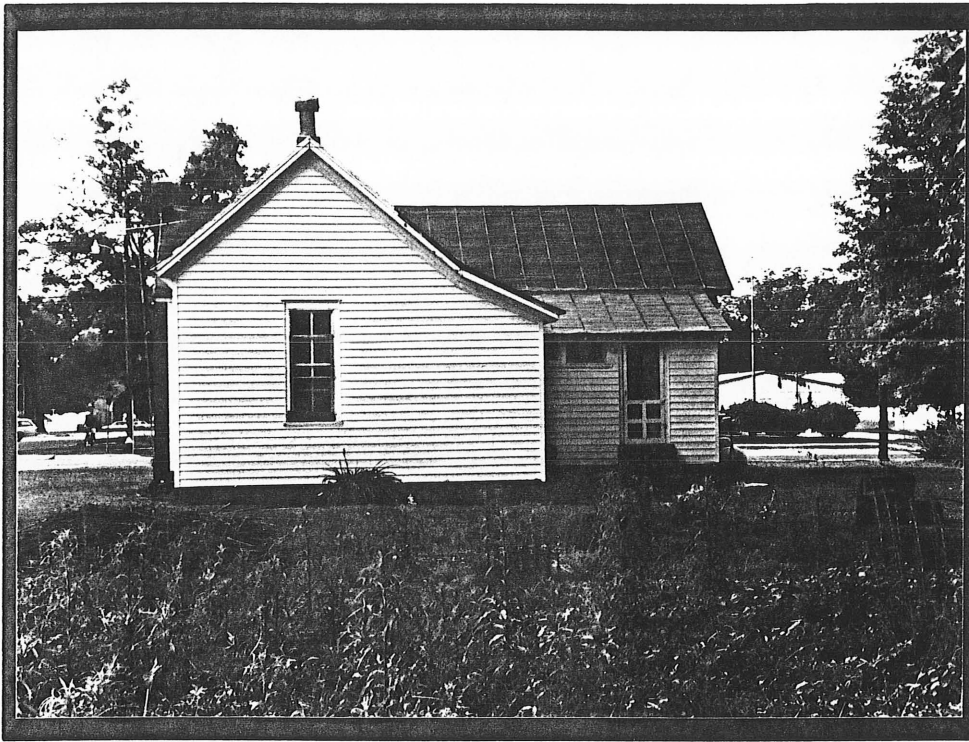
**PROPERTY #34**  
Pink Hill Historic  
District—W Side of  
Jones Street,  
N of College Street



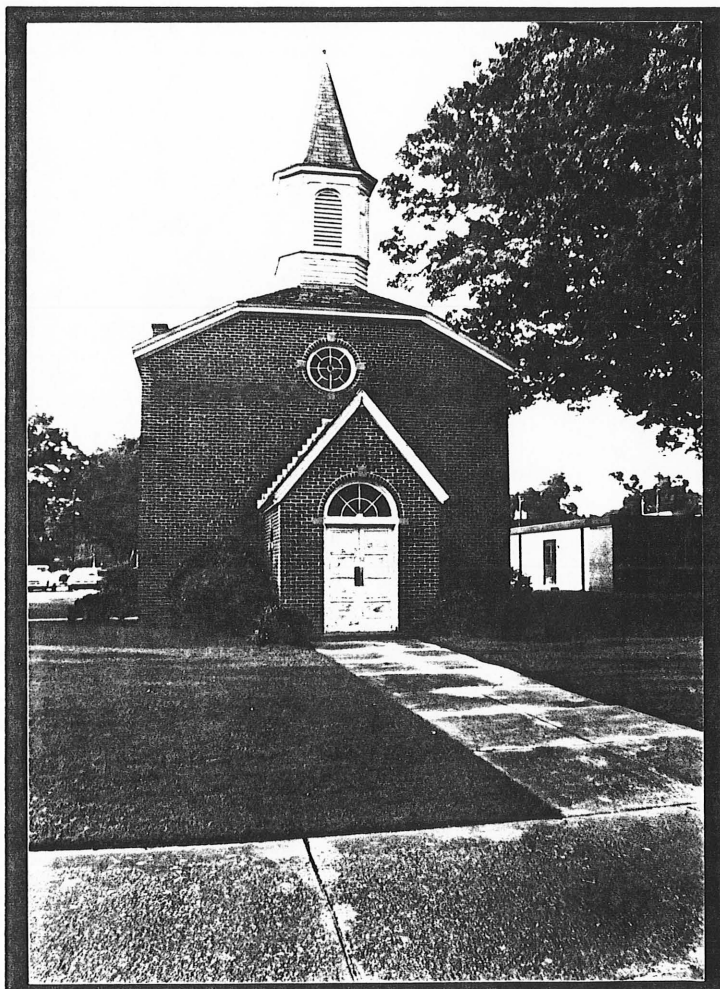
**PROPERTY #35**  
Pink Hill Historic  
District-S Side of  
Walnut Street, E of  
Central Avenue



**PROPERTY #36**  
Pink Hill Historic  
District-S Side of  
Walnut Street, E of  
Central Avenue



**PROPERTY #37**  
Pink Hill Historic  
District—SE Corner  
of Junction of  
Walnut Street and  
Central Avenue



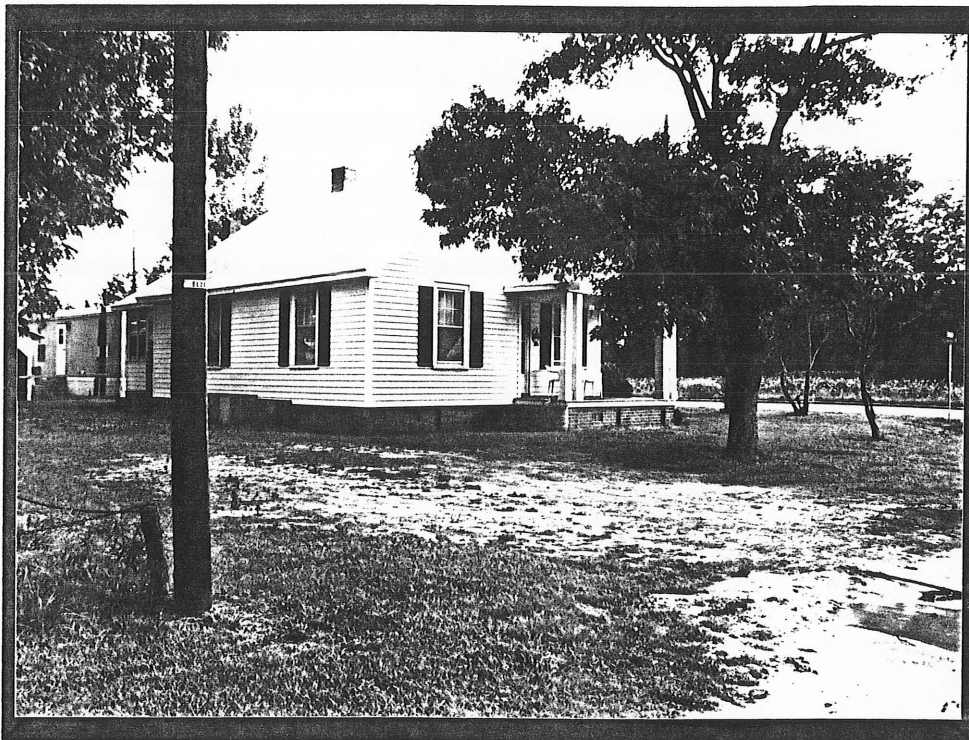
**PROPERTY #38**  
Pink Hill Historic  
District—NE Corner  
of Junction of  
Walnut and Pine Street



**PROPERTY #39**  
Pink Hill Historic  
District—SW Corner  
of Junction of  
Walnut and Pine Street



**PROPERTY #40**  
Pink Hill Historic  
District—N Side of  
Walnut Street,  
E of Pine Street



**PROPERTY #41**  
Pink Hill Historic  
District—SE Corner  
of Junction of  
Walnut and  
Turner Street



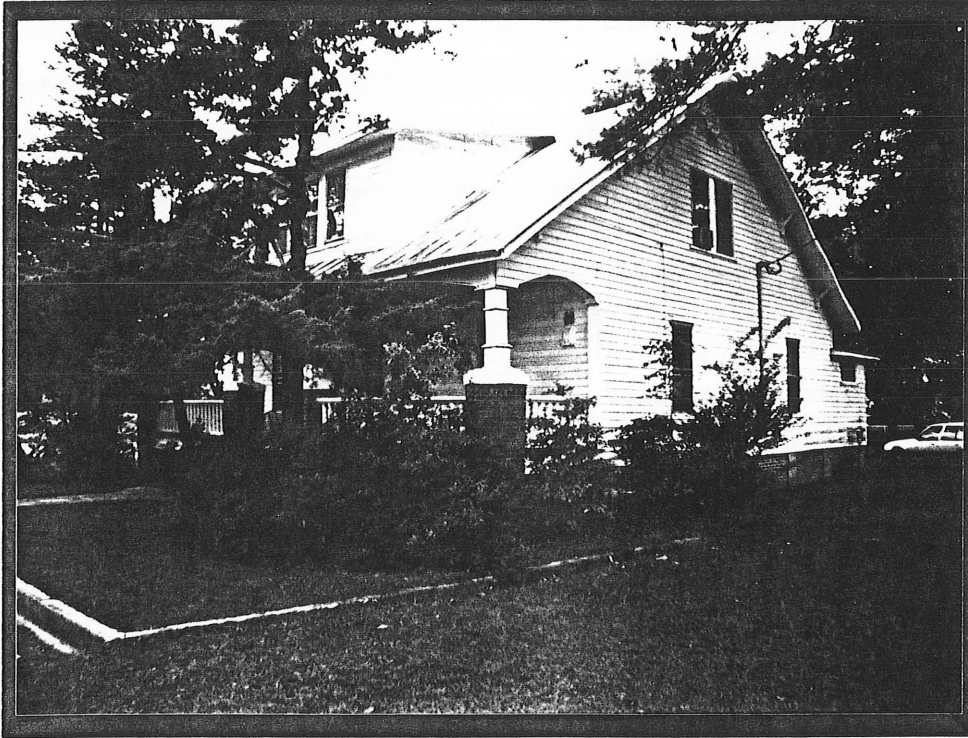
**PROPERTY #42**  
Pink Hill Historic  
District—NW Corner  
of Junction of  
Walnut and  
Turner Street



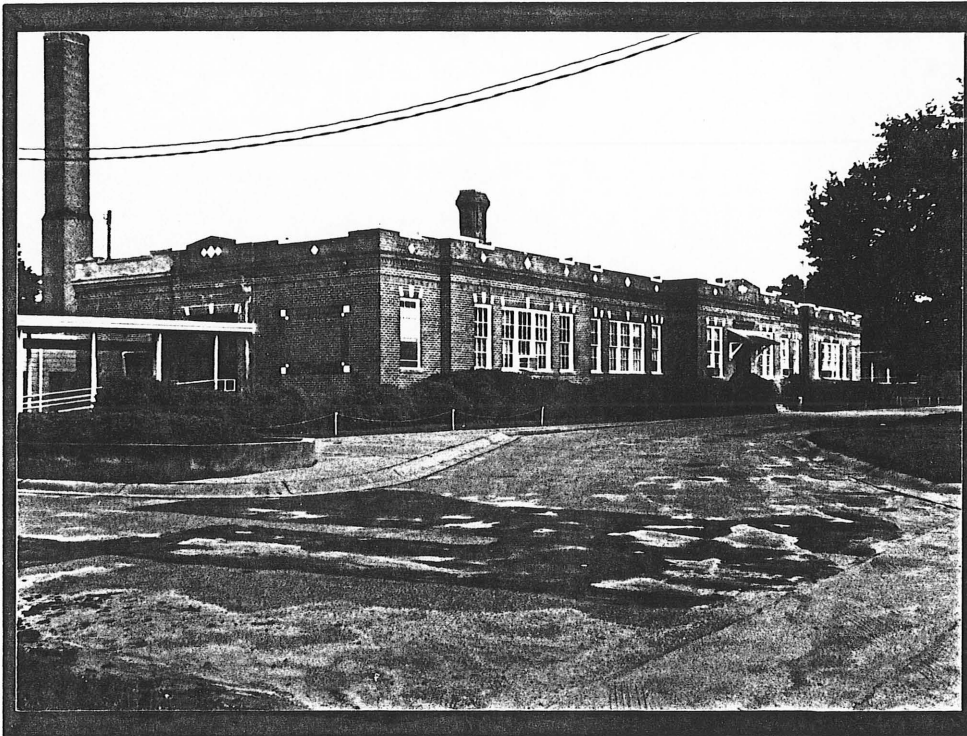
**PROPERTY #43**  
Pink Hill Historic  
District—W Side of  
Turner Street,  
N of Walnut Street



**PROPERTY #44**  
Pink Hill Historic  
District—S Side of  
Walnut Street,  
E of Lee Street

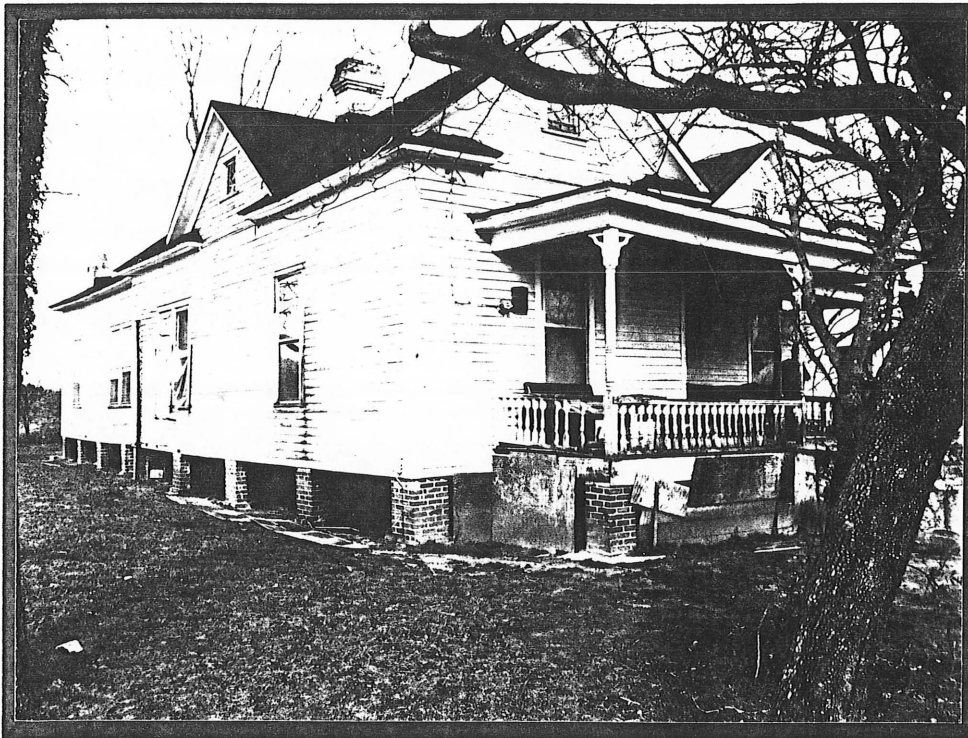


**PROPERTY #45**  
Pink Hill Historic  
District—W Side of  
Turner Street,  
S of College Street

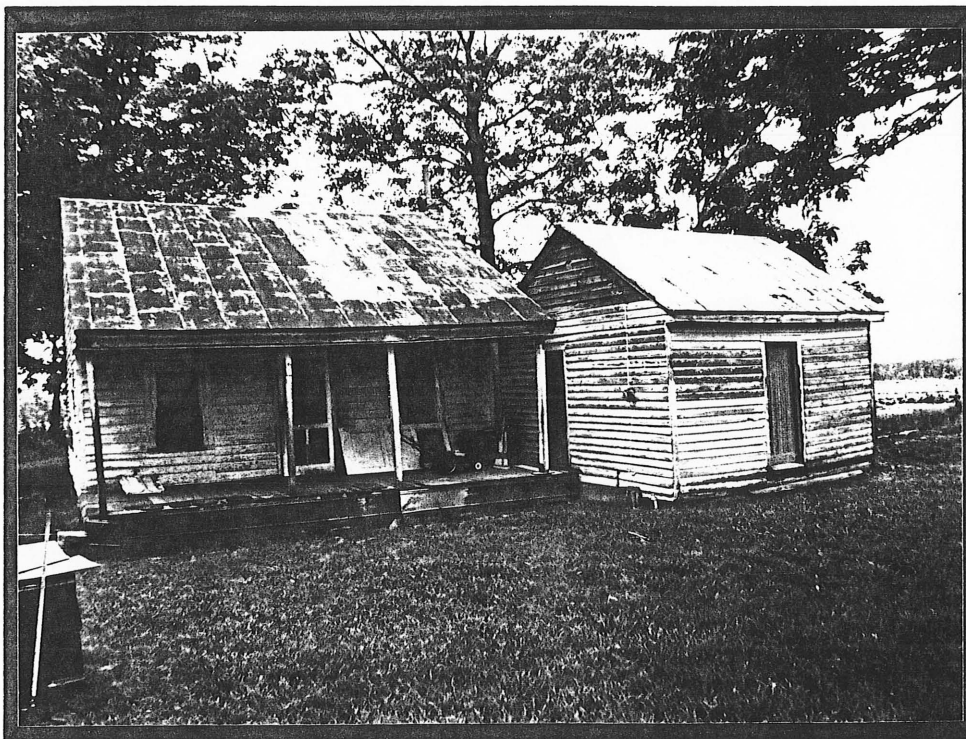


**PROPERTY #46**  
Pink Hill Historic  
District—S Side of  
Walnut Street,  
Between Pine Street  
and Central Avenue

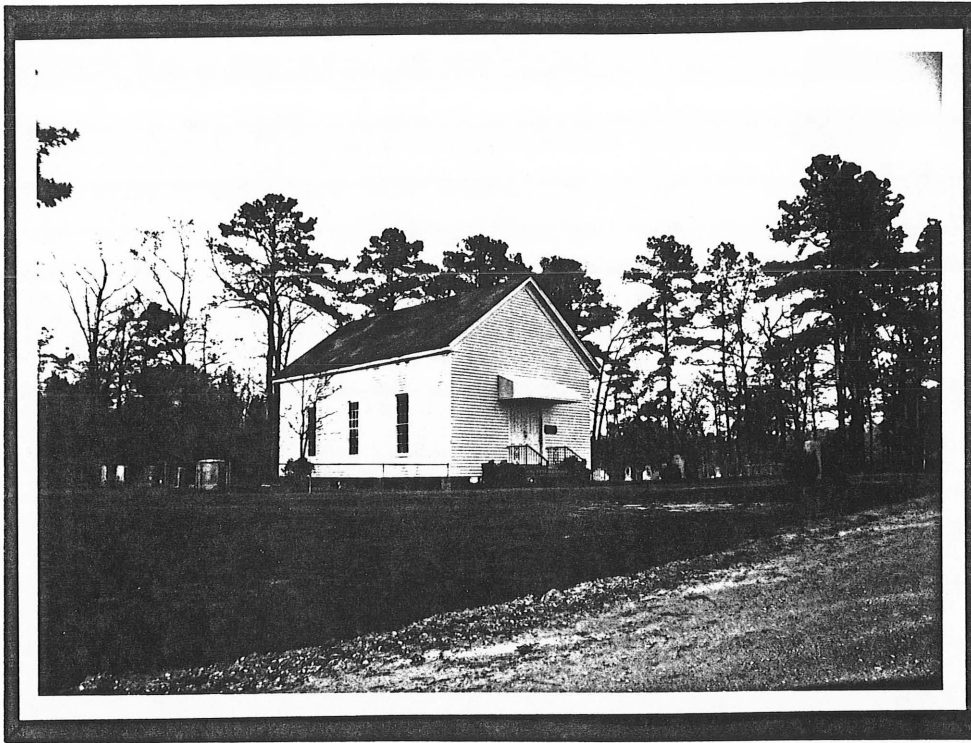




**PROPERTY #48**  
Hugh Edgar Maxwell  
House-N Side of  
SR 1551, 0.1 Mile  
E of SR 1549



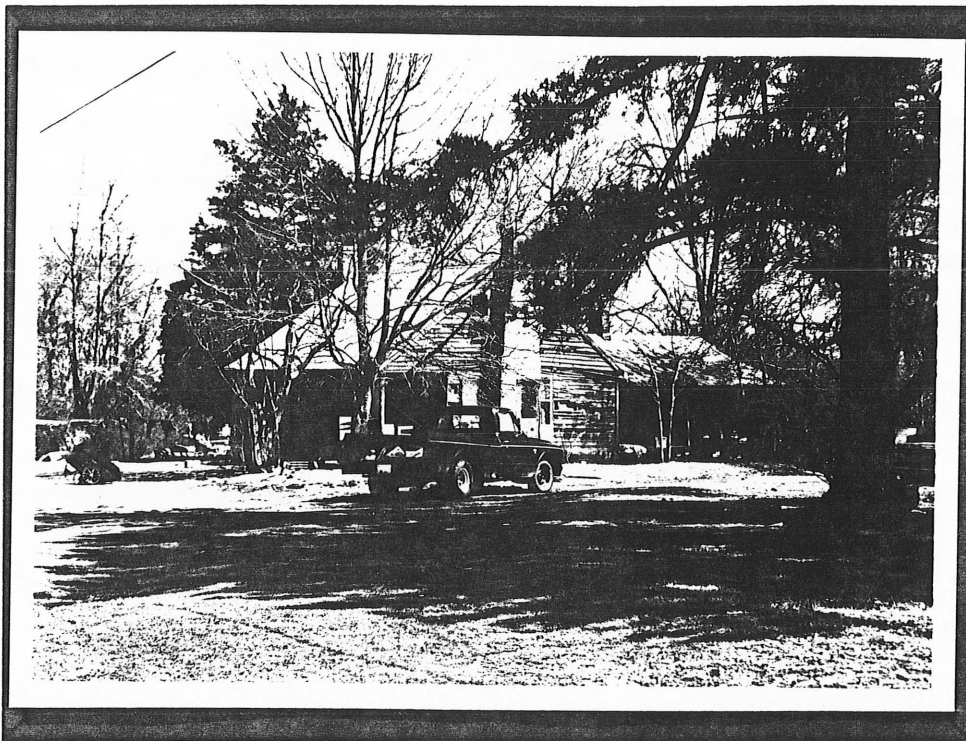
**PROPERTY #49**  
Hugh Maxwell House-  
N Side of SR 1551,  
Opposite Junction  
With SR 1549



**PROPERTY #50**  
Hebron Church—  
N Side of SR 1551,  
0.15 Miles E of  
SR 1554

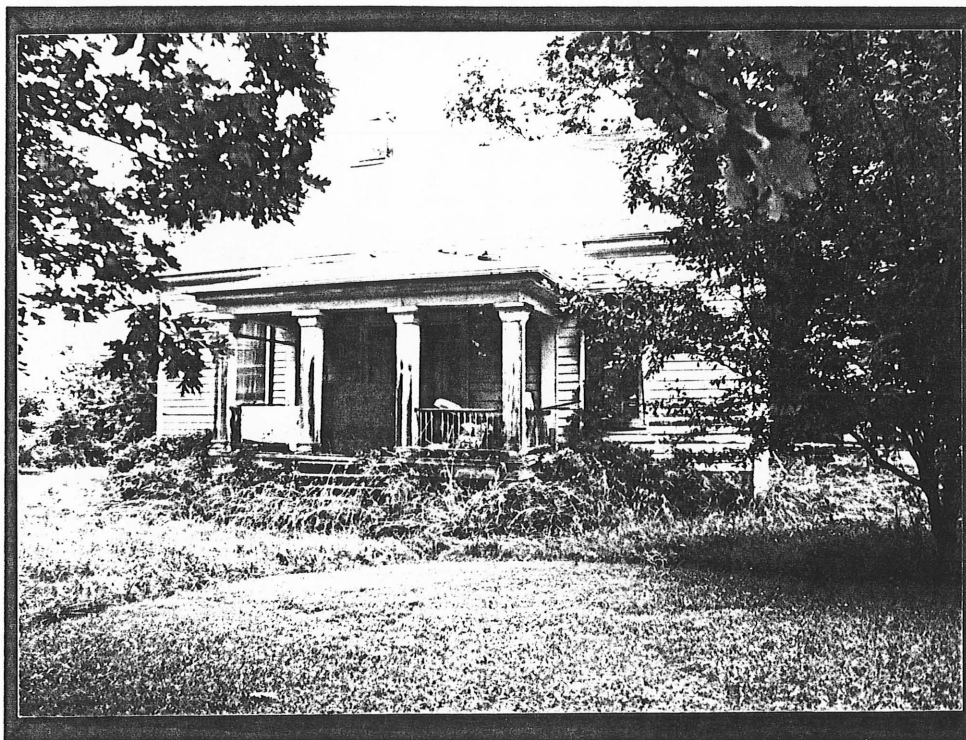


**PROPERTY #51**  
Gaston Kornegay  
House—W Side of  
NC 111, Opposite  
Junction with NC 11



**PROPERTY #53**

**Kornegay House—  
S Side of NC 11,  
Opposite Junction  
with SR 1004**



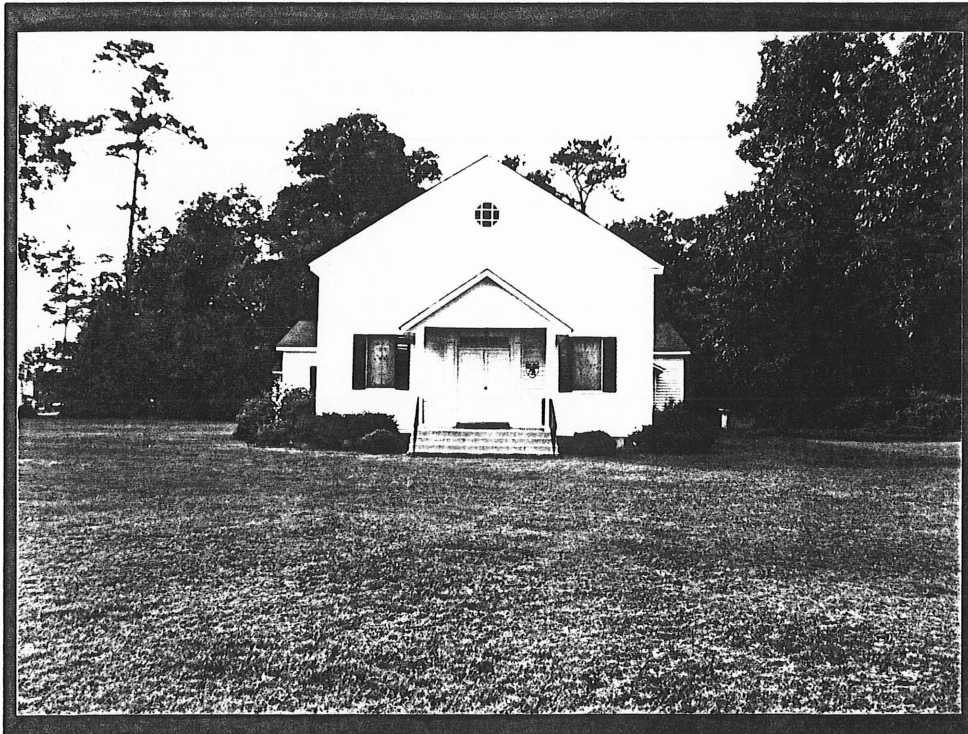
**PROPERTY #54**

**George E. Houston  
House—N Side of  
SR 1380, 0.1 Mile  
W of NC 11**



**PROPERTY #56**

**Grady House—  
N Side of NC 11,  
0.2 Miles W of  
SR 1516**

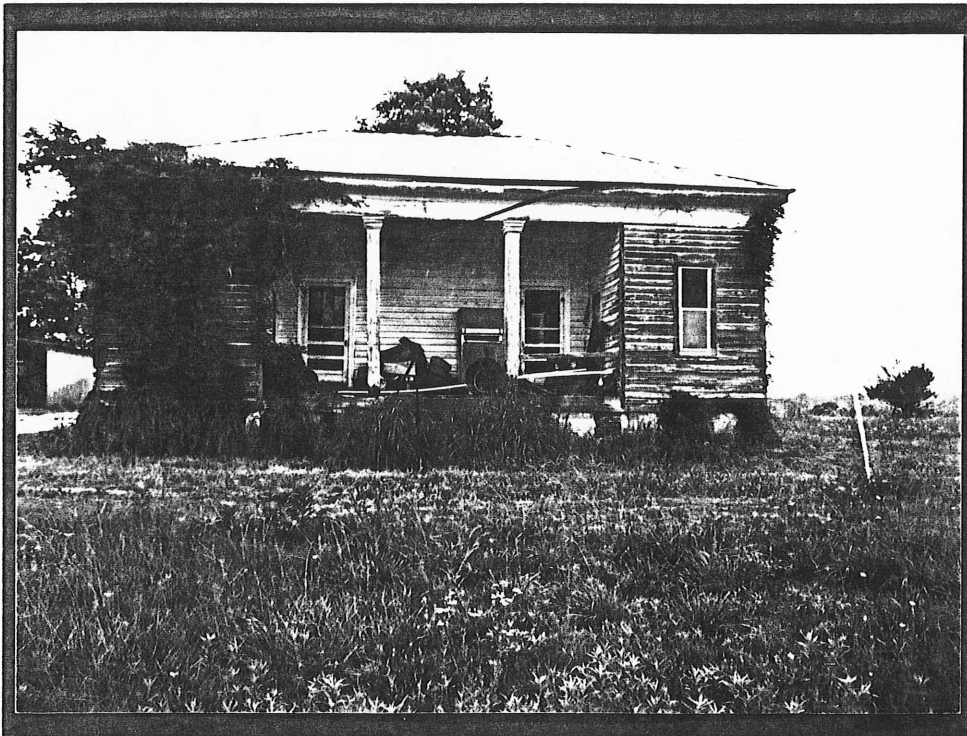


**PROPERTY #57**

**Wesley Chapel—  
NE Corner of  
Junction of NC 11  
and SR 1516**



**PROPERTY #59**  
B.F.Grady School-  
N Side of NC 11,  
0.4 Miles W of  
NC 111



**PROPERTY #60**  
Greek Revival  
Farmhouse-Up 0.15  
Mile Dirt Lane,  
N Side of NC 11,  
0.3 Miles E of  
SR 1300



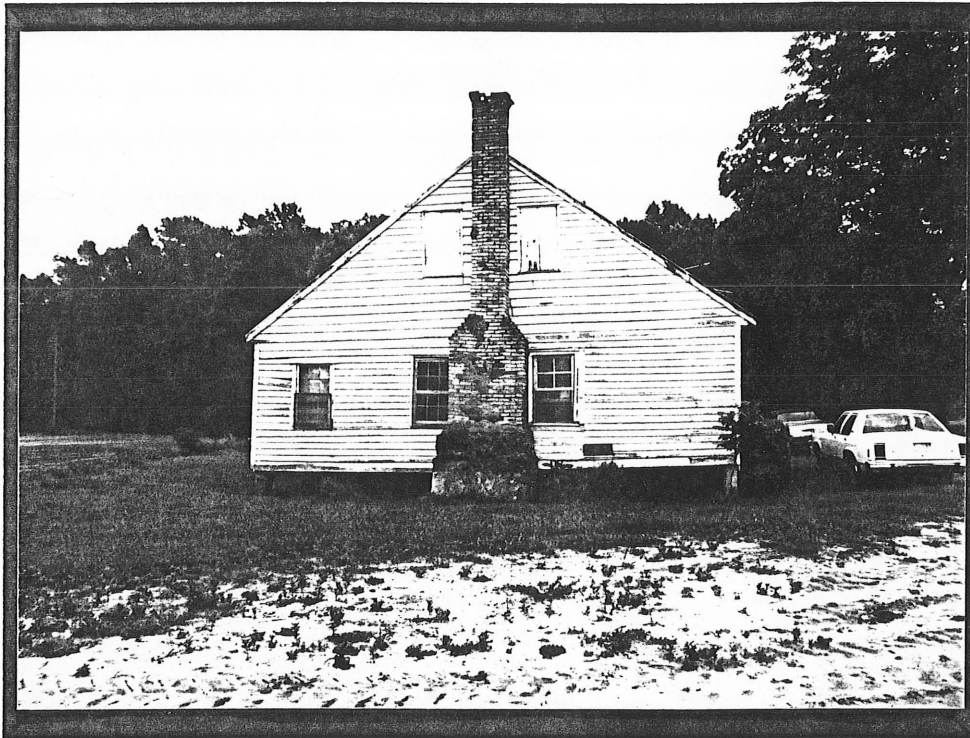
**PROPERTY #61**

**Packhouse-  
N Side of NC 11,  
0.35 Miles W of  
SR 1300**



**PROPERTY #62**

**Miller Family  
Cemetery-End of  
Goshen Trailer  
Park Road, S Side  
of NC 11, 0.3 Miles  
W of SR 1300**



**PROPERTY #63**  
John Maxwell House—  
Up 0.1 Mile Dirt Lane,  
N Side of NC 11,  
0.6 Miles E of  
SR 1554



**PROPERTY #65**  
Miller Family House—  
Up 0.1 Mile Dirt Lane,  
S Side of NC 11,  
0.4 Miles W of  
SR 1300



**PROPERTY #66**

NW Corner of  
Junction of NC 11  
and Lenoir County  
SR 1110



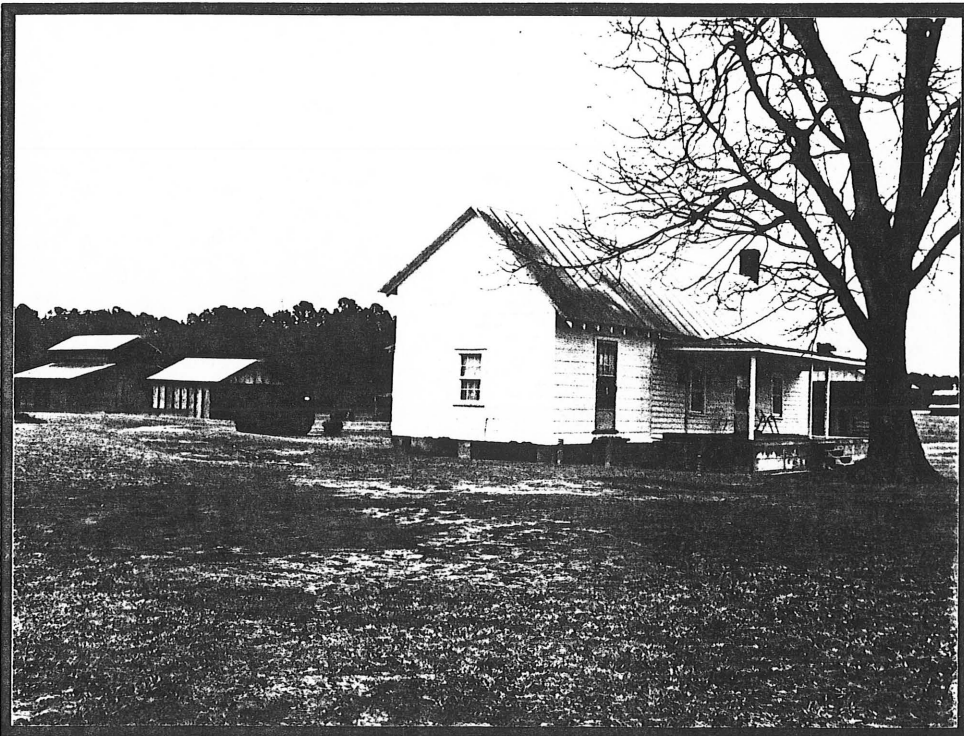
**PROPERTY #67**

N Side of NC 11,  
0.2 Miles W of  
SR 1554

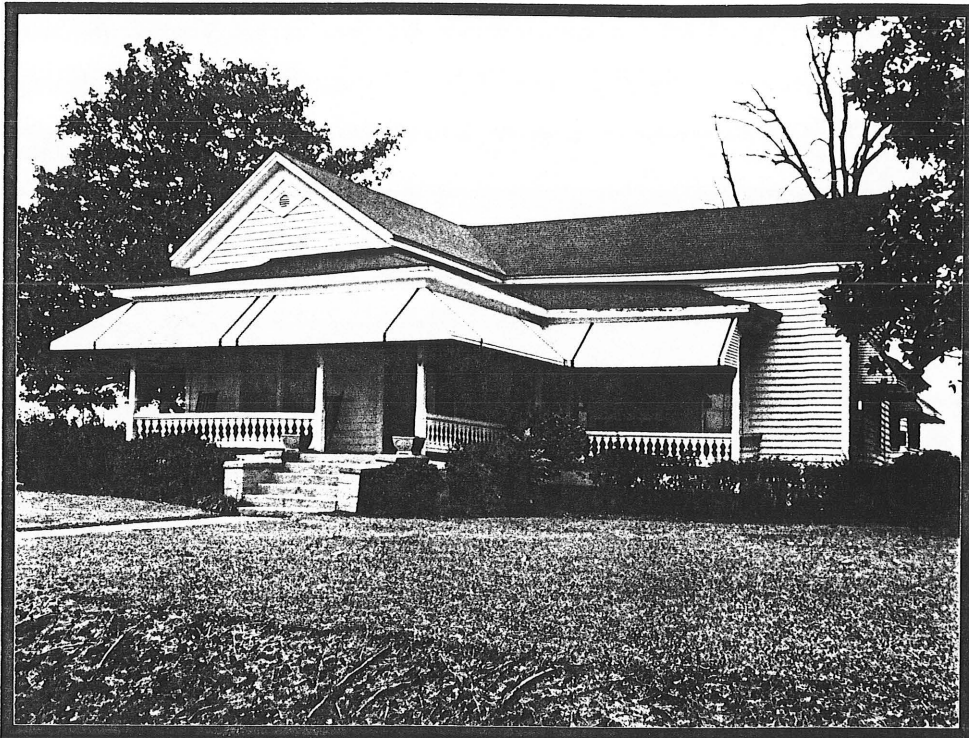




**PROPERTY #68**  
S Side of NC 11,  
1.2 Miles E of  
SR 1554



**PROPERTY #69**  
N Side of NC 11,  
0.6 Miles E of  
SR 1554



**PROPERTY #70**  
S Side of NC 11,  
0.3 Miles W of  
SR 1707



**PROPERTY #71**  
N Side of NC 11,  
0.3 Miles W of  
SR 1707



**PROPERTY #72**  
N Side of NC 11,  
0.6 Miles E of  
NC 111



**PROPERTY #73**  
S Side of NC 11,  
0.1 Mile E of  
NC 111



**PROPERTY #74**  
NE Corner of  
Junction of NC 11  
and SR 1501



**PROPERTY #75**  
S Side of NC 11,  
Opposite Junction  
with SR 1501



**PROPERTY #76**  
N Side of NC 11,  
0.8 Miles E of  
SR 1517