

ER95-7568
CUTB

**A Photographic Inventory
of
An Historical Architectural Survey
For
WILMINGTON BYPASS**

**New Hanover and Brunswick Counties
Federal Aid No. STP-17(1)
State Project No. 8.U250901
TIP No. R-2633**

Prepared For:

**THE FEDERAL HIGHWAY ADMINISTRATION
AND
THE NORTH CAROLINA DEPARTMENT OF TRANSPORTATION**

Prepared By:

GREINER, INC.

**BW/NH
CR.68
1994
part 2 of 3**

AUGUST 1994

**PHOTOGRAPHIC INVENTORY OF
AN HISTORICAL ARCHITECTURAL SURVEY REPORT
FOR
WILMINGTON BYPASS
NEW HANOVER AND BRUNSWICK COUNTIES, NORTH CAROLINA
FEDERAL AID NO. STP-17(1)
STATE PROJECT NO. 8.U250901
TIP NO. R-2633**

Prepared For:

**The Federal Highway Administration
and
The North Carolina Department of Transportation**

Prepared By:

**Marvin A. Brown
Suzanne S. Pickens
James R. Snodgrass
August, 1994**

**GREINER, INC.
4630 Paragon Park Road
Raleigh, North Carolina
(919) 876-2760**

**PHOTOGRAPHIC INVENTORY OF
AN HISTORIC ARCHITECTURAL SURVEY REPORT FOR
WILMINGTON BYPASS
NEW HANOVER AND BRUNSWICK COUNTIES, NORTH CAROLINA
FEDERAL AID NO. STP-17(1)
STATE PROJECT NO. 8.U250901
TIP NO. R-2633**

<i>PROPERTY NUMBER/ LETTER</i>	<i>DIRECTION OF VIEW</i>	<i>PROPERTY IDENTIFICATION</i>
A	Facing east	West side of Blue Clay Road across railroad tracks, 0.3 miles north of North Kerr Avenue, Wrightsboro vicinity, New Hanover County
B	Facing north	West side of Castle Hayne Road (US 117/NC 133), 0.3 miles north of Hermitage Road, Wrightsboro vicinity, New Hanover County
C	Facing west	West side of Castle Hayne Road (US 117/NC 133), 0.4 miles north of Hermitage Road, Wrightsboro vicinity, New Hanover County
H	Facing west	North side of Sandy Avenue, 0.05 miles east of Castle Hayne Road (US 117/NC 133), Wrightsboro vicinity, New Hanover County
I	Facing southwest	West side of Holland Road, 0.3 miles north of Longleaf Drive, Wrightsboro vicinity, New Hanover County
J	Facing east	East of Oakley Loop Road opposite Ness Drive, Wrightsboro vicinity, New Hanover County
K	Facing southeast	East side of SR 1430, 0.6 miles north of SR 1431, Cedar Hill vicinity, Brunswick County
L	Facing east	East side of SR 1430, 0.8 miles north of SR 1431, Cedar Hill vicinity, Brunswick County
N	Facing northwest	West side of SR 1428, 0.15 miles north of junction with SR 1426, Phoenix vicinity, Brunswick County
O	Facing north	South side of SR 1428, 0.5 miles north of junction with SR 1426, Phoenix vicinity, Brunswick County

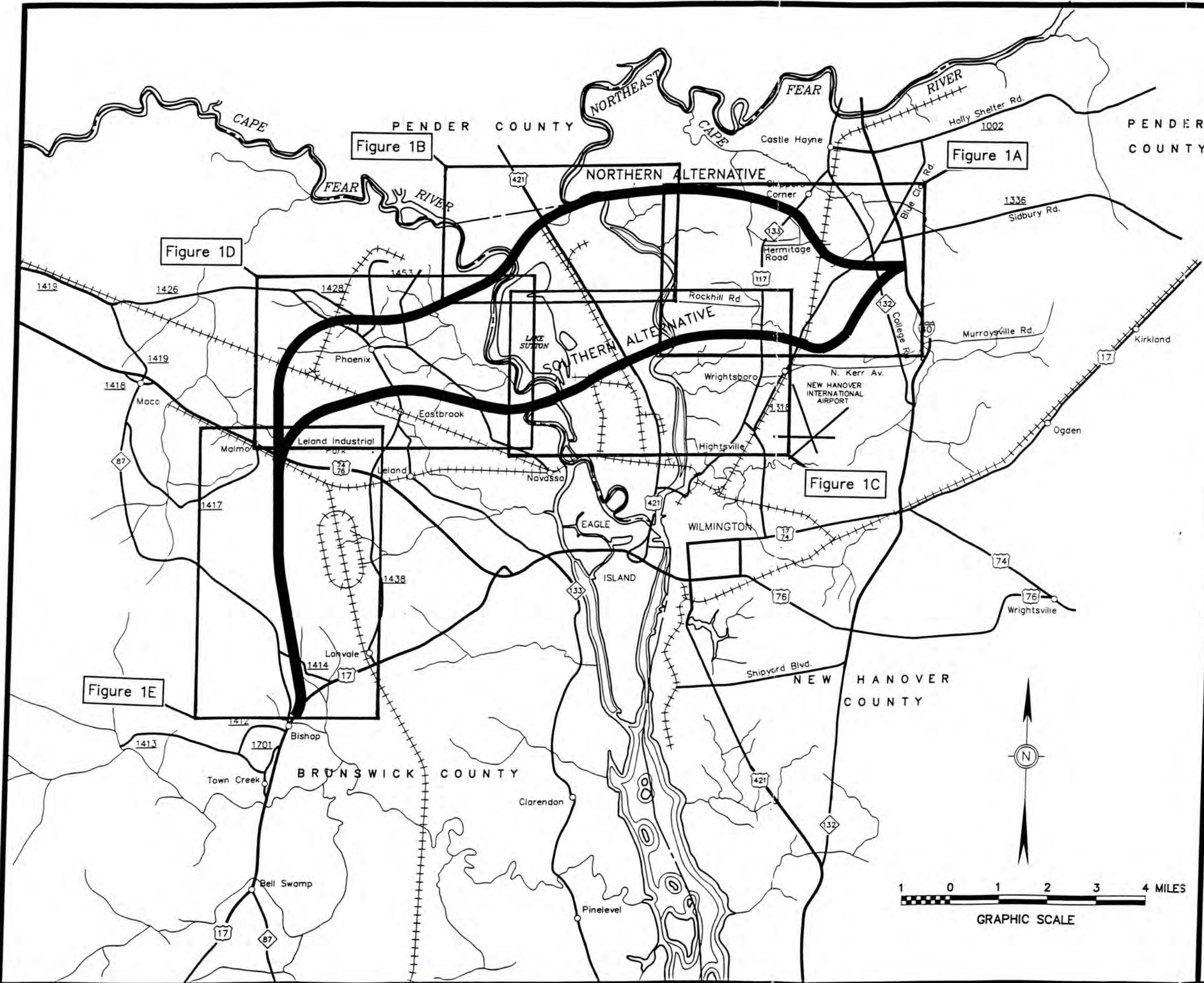
<i>PROPERTY NUMBER/ LETTER</i>	<i>DIRECTION OF VIEW</i>	<i>PROPERTY IDENTIFICATION</i>
3	Facing northwest	West side of Blue Clay Road, 0.5 miles south of NC 132, Wrightsboro vicinity, New Hanover County
4	Facing southeast	East side of Castle Hayne Road (US 117/NC 133), 0.4 miles north of Hermitage Road, Wrightsboro vicinity, New Hanover County
16	Facing northwest	Wrightsboro School--East side of Castle Hayne Road (US 117/NC 133). 0.1 miles north of North Kerr Avenue, Wrightsboro vicinity, New Hanover County
17	Facing northeast	East side of Castle Hayne Road (US 117/NC 133) at Teresa Drive, Wrightsboro vicinity, New Hanover County
18	Facing east	East side of Castle Hayne Road (US 117/NC 133) at Arlens Drive, Wrightsboro vicinity, New Hanover County
19	Facing northwest	North side of Oakley Road, 0.1 miles east of Oakley Loop Road, Wrightsboro vicinity, New Hanover County
20	Facing north	North side of Oakley road, 0.05 miles west of Oakley Loop Road, Wrightsboro vicinity, New Hanover County
21	Facing northwest	North side of Oakley Road, 0.1 miles west of Oakley Loop Road, Wrightsboro vicinity, New Hanover County
22	Facing southeast	East side of Oakley Loop Road, 0.175 miles south of Oakley Road, Wrightsboro vicinity, New Hanover County
23	Facing northeast	East side of Oakley Loop Road, 0.2 miles south of Oakley Road, Wrightsboro vicinity, New Hanover County
24	Facing east	East of Oakley Loop Road opposite Fork Drive, Wrightsboro vicinity, New Hanover County

PROPERTY NUMBER/ LETTER	DIRECTION OF VIEW	PROPERTY IDENTIFICATION
25	Facing west	Northwest corner of junction of Oakley Loop Road and Ness Drive, Wrightsboro vicinity, New Hanover County
26	Facing south	South side of Ness Drive, 0.025 miles west of Oakley Loop Road, Wrightsboro vicinity, New Hanover County
27	Facing south	South side of Oakley Loop Road, 0.4 miles south of Oakley Road, Wrightsboro vicinity, New Hanover County
28	Facing east	East side of Oakley Loop Road, 0.3 miles south of Oakley Road, Wrightsboro vicinity, New Hanover County
29	Facing northwest	West side of Oakley Loop Road, 0.2 miles south of Oakley Road, Wrightsboro vicinity, New Hanover County
31	Facing northwest	West side of Oakley Loop Road, 0.025 miles south of Oakley Road, Wrightsboro vicinity, New Hanover County
32	Facing southeast	South side of Oakley road, 0.1 miles west of Oakley Loop Road, Wrightsboro vicinity, New Hanover County
33	Facing south	South side of Oakley road, 0.2 miles west of Oakley Loop Road, Wrightsboro vicinity, New Hanover County
34	Facing southeast	North side of Oakley Road, 0.075 miles east of Oakley Loop Road, Wrightsboro vicinity, New Hanover County
35	Facing southeast	South side of Oakley Road, 0.35 miles west of Castle Hayne Road (US 117/NC 133) and Oakley Road, Wrightsboro vicinity, New Hanover County
36	Facing south	South side of Oakley Road, 0.25 miles west of Castle Hayne Road (US 117/NC 133) and Oakley Road, Wrightsboro vicinity, New Hanover County

<i>PROPERTY NUMBER/ LETTER</i>	<i>DIRECTION OF VIEW</i>	<i>PROPERTY IDENTIFICATION</i>
37	Facing southeast	South side of Oakley Road, 0.2 miles west of Castle Hayne Road (US 117/NC 133) and Oakley Road, Wrightsboro vicinity, New Hanover County
38	Facing northwest	Southwest corner of junction of Castle Hayne Road (US 117/NC 133) and Oakley Road, Wrightsboro vicinity, New Hanover County
39	Facing north	Reeves A.M.E. Zion Church--East side of SR 1430, 1.4 miles north of junction with SR 1431, Cedar Hill vicinity, Brunswick County
40	Facing east	East side of SR 1426, 1.0 miles south of junction with SR 1430, Phoenix vicinity, Brunswick County
42	Facing northwest	West side of Castle Hayne Road (US 117/NC 133) opposite Holland Drive, Wrightsboro vicinity, New Hanover County
45	Facing northwest	West side of Castle Hayne Road (US 117/NC 133), 0.1 miles south of Holland Drive, Wrightsboro vicinity, New Hanover County
46	Facing northwest	West side of Castle Hayne Road (US 117/NC 133), 0.125 miles south of Holland Drive, Wrightsboro vicinity, New Hanover County
47	Facing southwest	West side of Castle Hayne Road (US 117/NC 133), 0.15 miles south of Holland Drive, Wrightsboro vicinity, New Hanover County
48	Facing southwest	West side of Castle Hayne Road (US 117/NC 133), 0.175 miles south of Holland Drive, Wrightsboro vicinity, New Hanover County
49	Facing north	West side of Castle Hayne Road (US 117/NC 133), 0.1 miles south of Whitman Avenue, Wrightsboro vicinity, New Hanover County
50	Facing west	West side of Castle Hayne Road (US 117/NC 133), 0.1 miles north of Longleaf Drive, Wrightsboro vicinity, New Hanover County

<i>PROPERTY NUMBER/ LETTER</i>	<i>DIRECTION OF VIEW</i>	<i>PROPERTY IDENTIFICATION</i>
57	Facing west	Goodman House and Doctor's Office--North side of SR 1414, 0.8 miles west of NC 17, Spring Hill vicinity, Brunswick County
58	Facing east	Down farm lane, south side of SR 1414, 0.6 miles east of NC 87, Spring Hill vicinity, Brunswick County
59	Facing northwest	West side of US 17, 0.6 miles west of SR 1414, Spring Hill vicinity, Brunswick County

N.B.: The use of both letters and numbers to identify the properties was due to the project's multiple stages of fieldwork. The gaps in numbering and lettering resulted from changes in the alignments and refining of the area of potential effect over the course of the project.



LEGEND

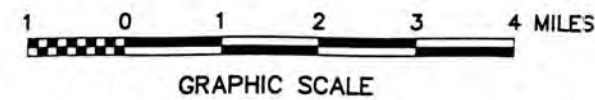
- +++++ Railroads
- Existing Roads
- ~ Streams & Creeks
- Rivers
- - - County Line
- █ Study Alternatives

**NORTH CAROLINA
DEPARTMENT OF TRANSPORTATION**

**WILMINGTON BYPASS
CORRIDOR STUDY**

T.I.P. R-2633

Key to Maps of The
Area of Potential Effect
and Property Inventory
Figure 1



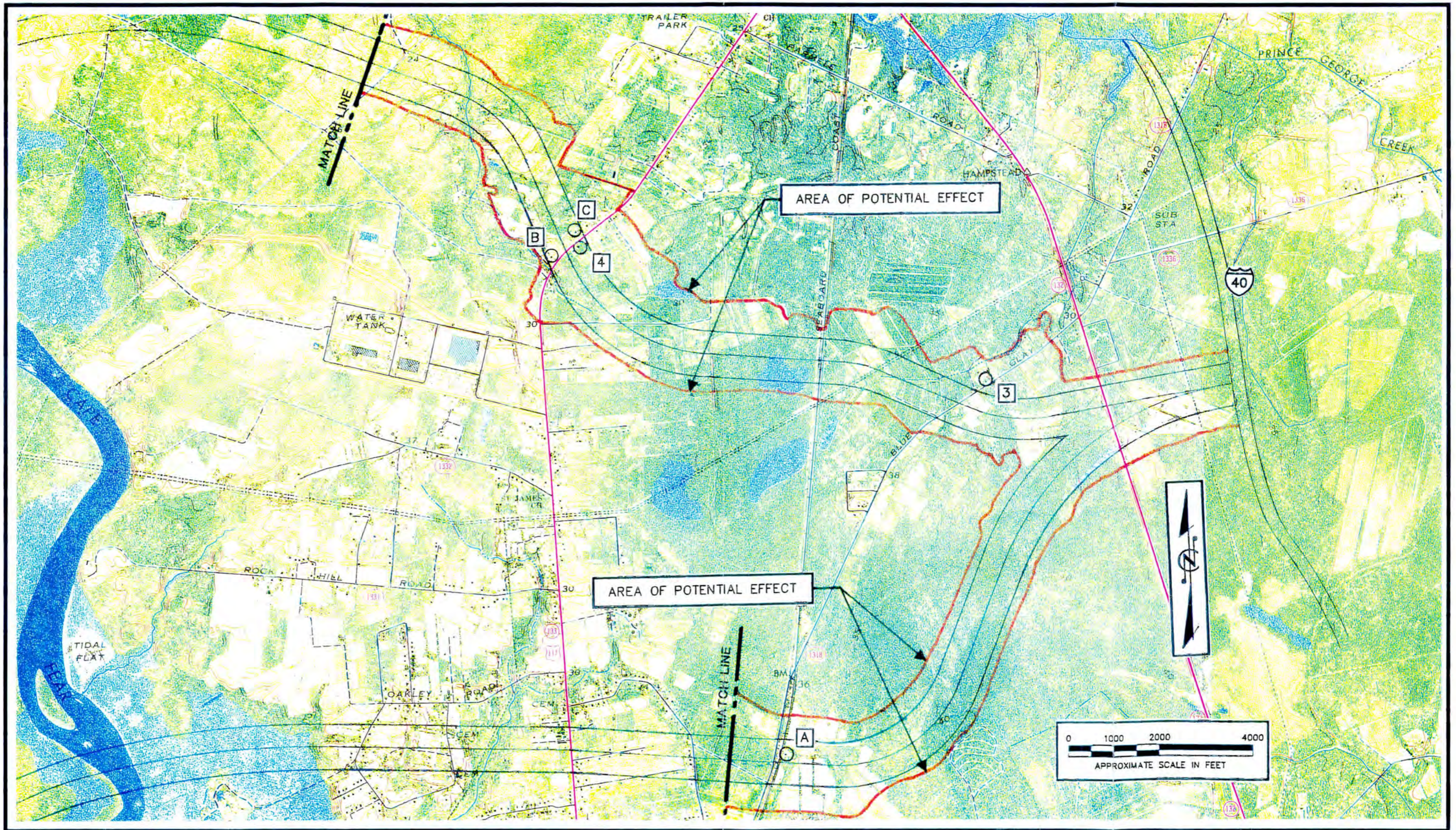


Figure 1A Area of Potential Effect and Property Inventory
 Source: Castle Hayne, Scotts Hill USGS Quad Maps

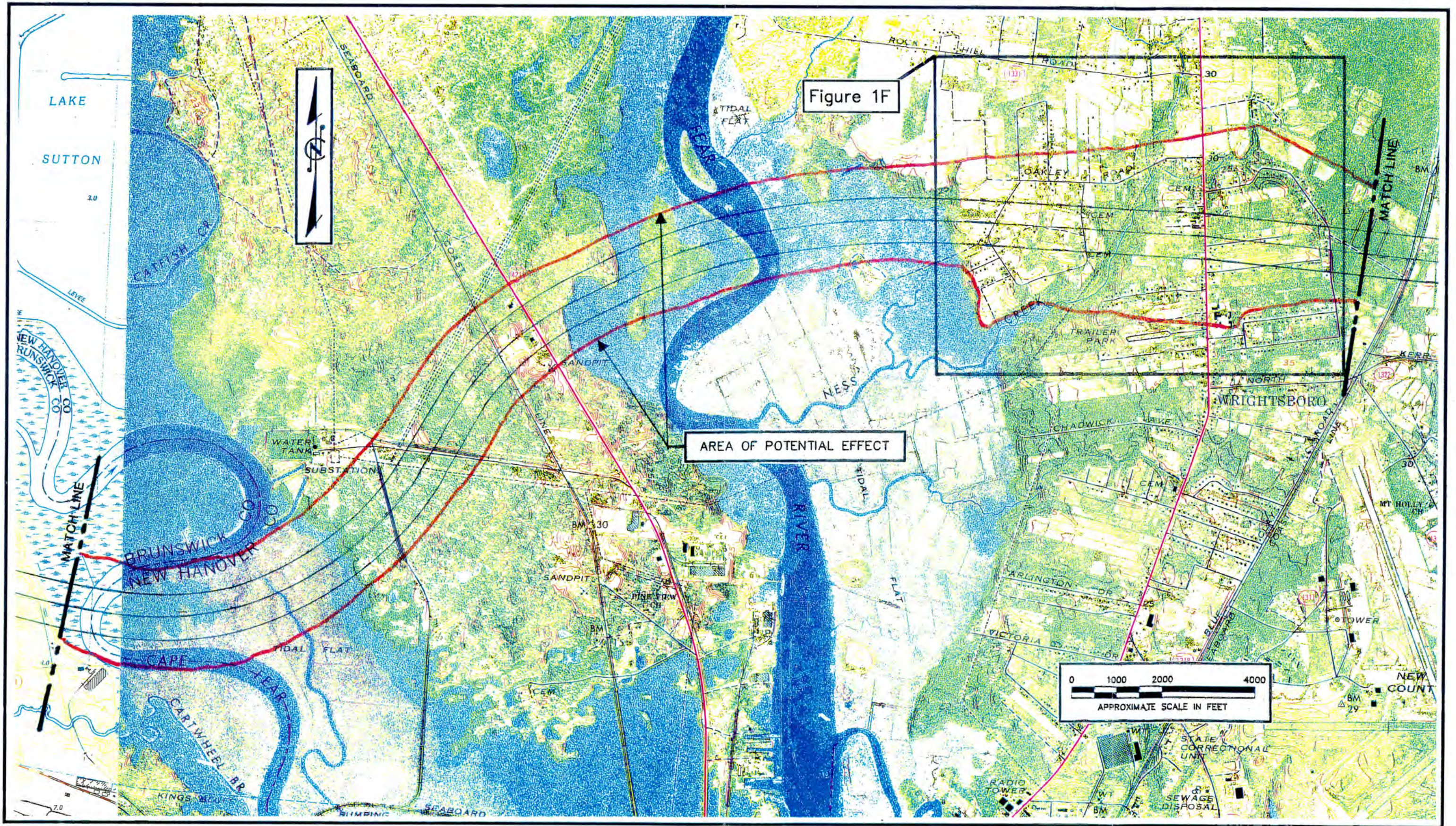


Figure 1B

Area of Potential Effect and Property Inventory
 Source: Leland, Castle Hayne USGS Quad Maps

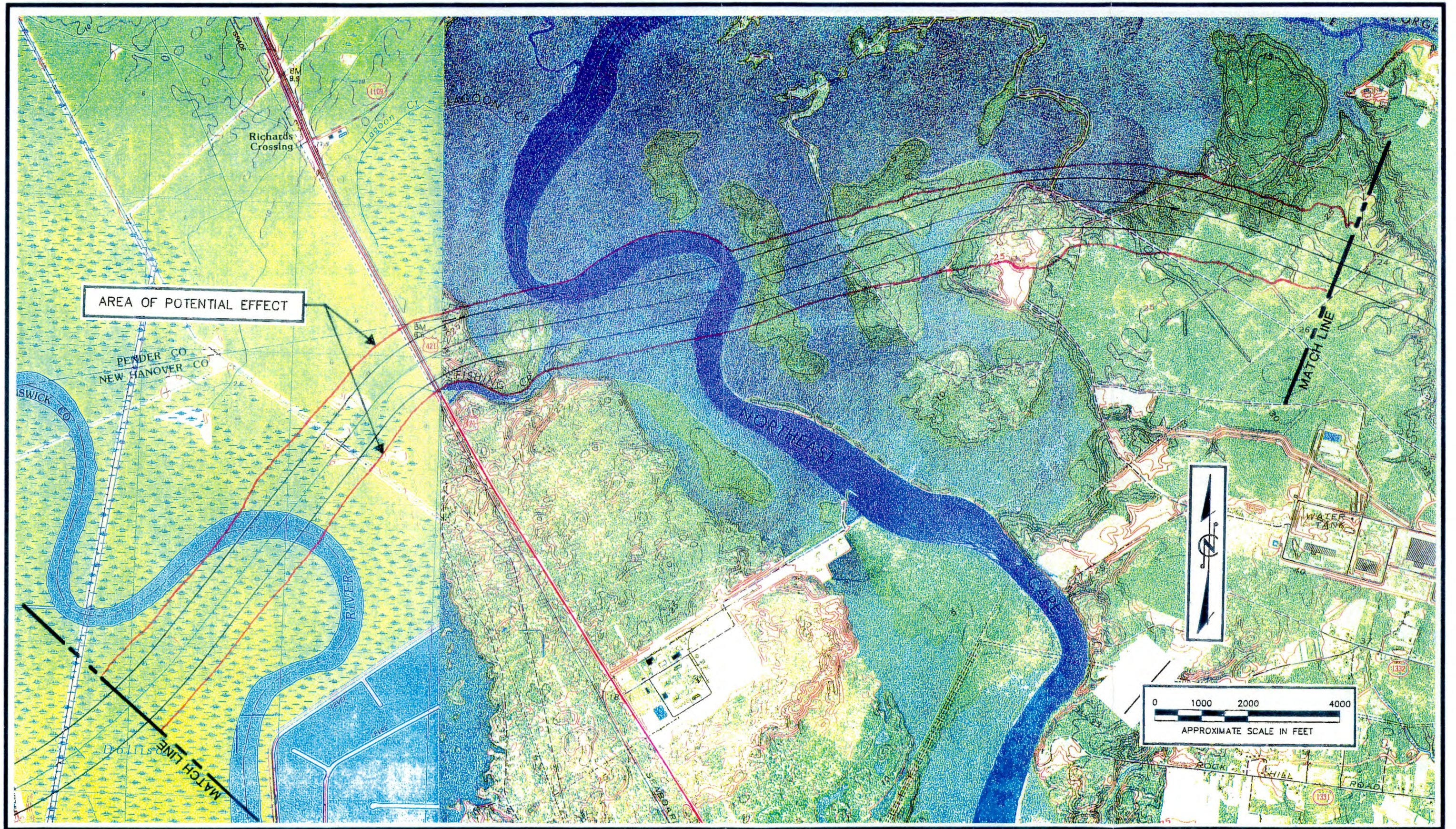


Figure 1C

Area of Potential Effect and Property Inventory
 Source: Leland, Castle Hayne, USGS Topographic Quad Maps

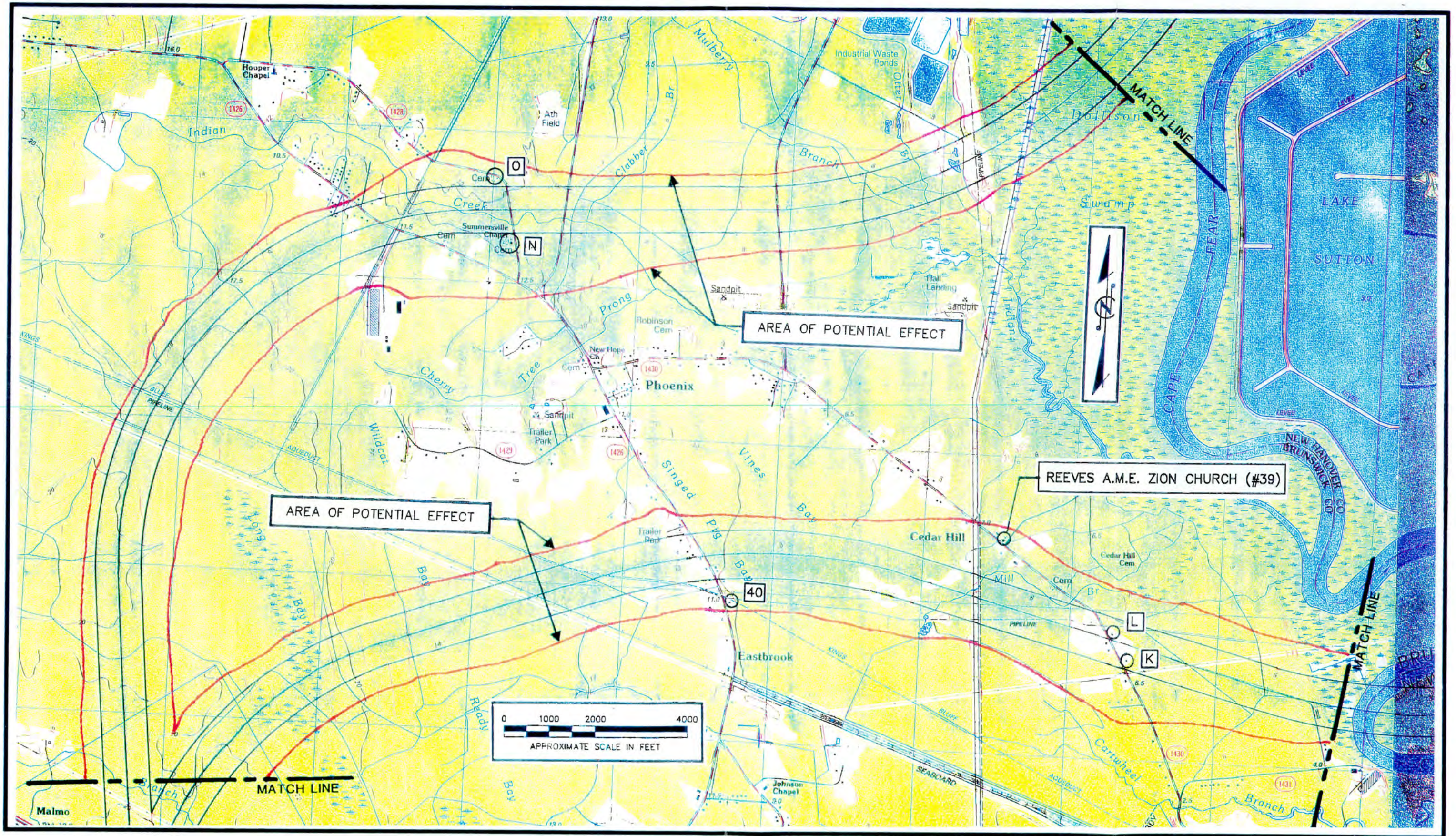


Figure 1D Area of Potential Effect and Property Inventory
 Source: Leland USGS Topographic Quad Map

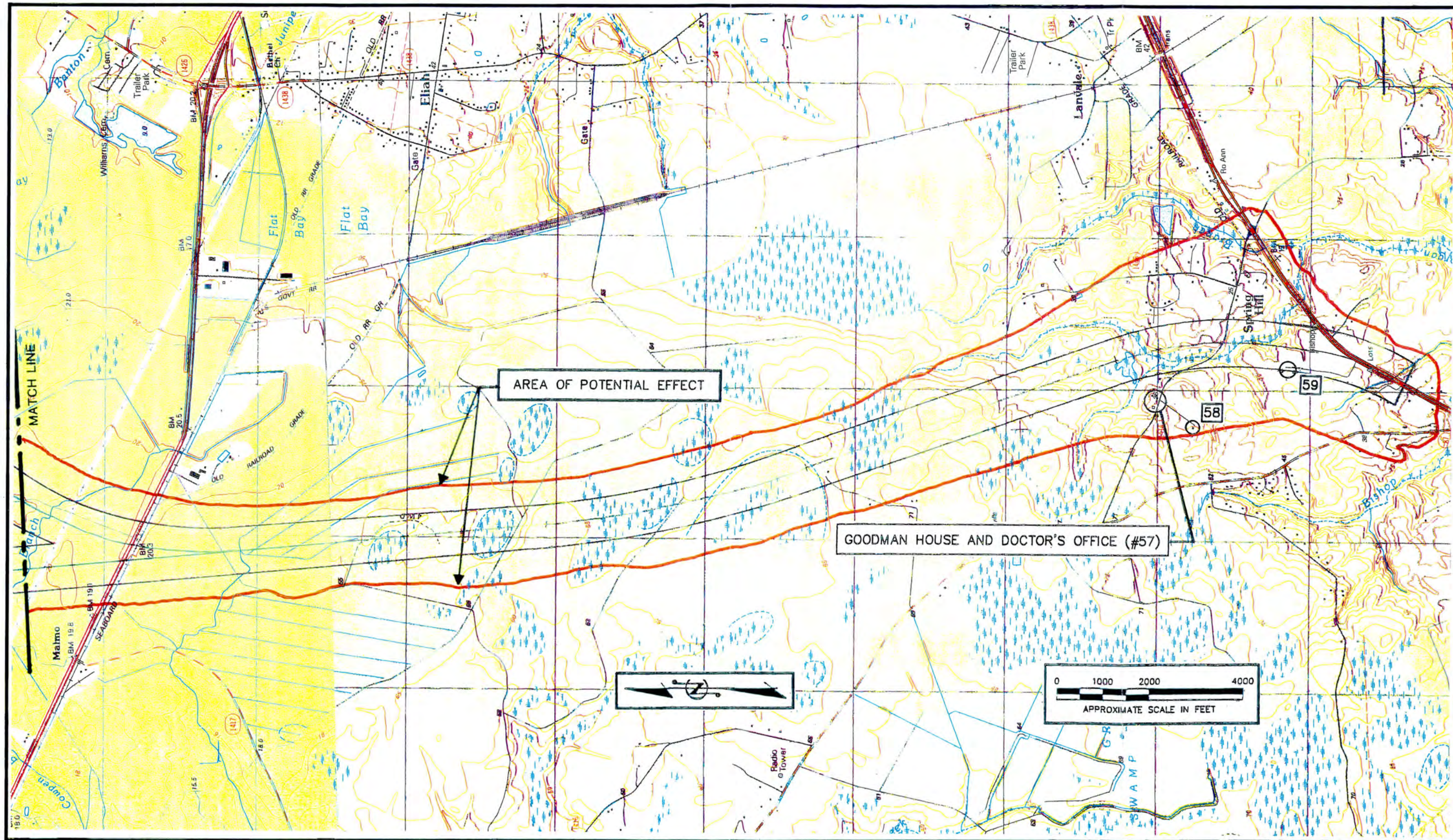


Figure 1E
 Area of Potential Effect and Property Inventory
 Source: Leland, Winnabow USGS Quad Maps

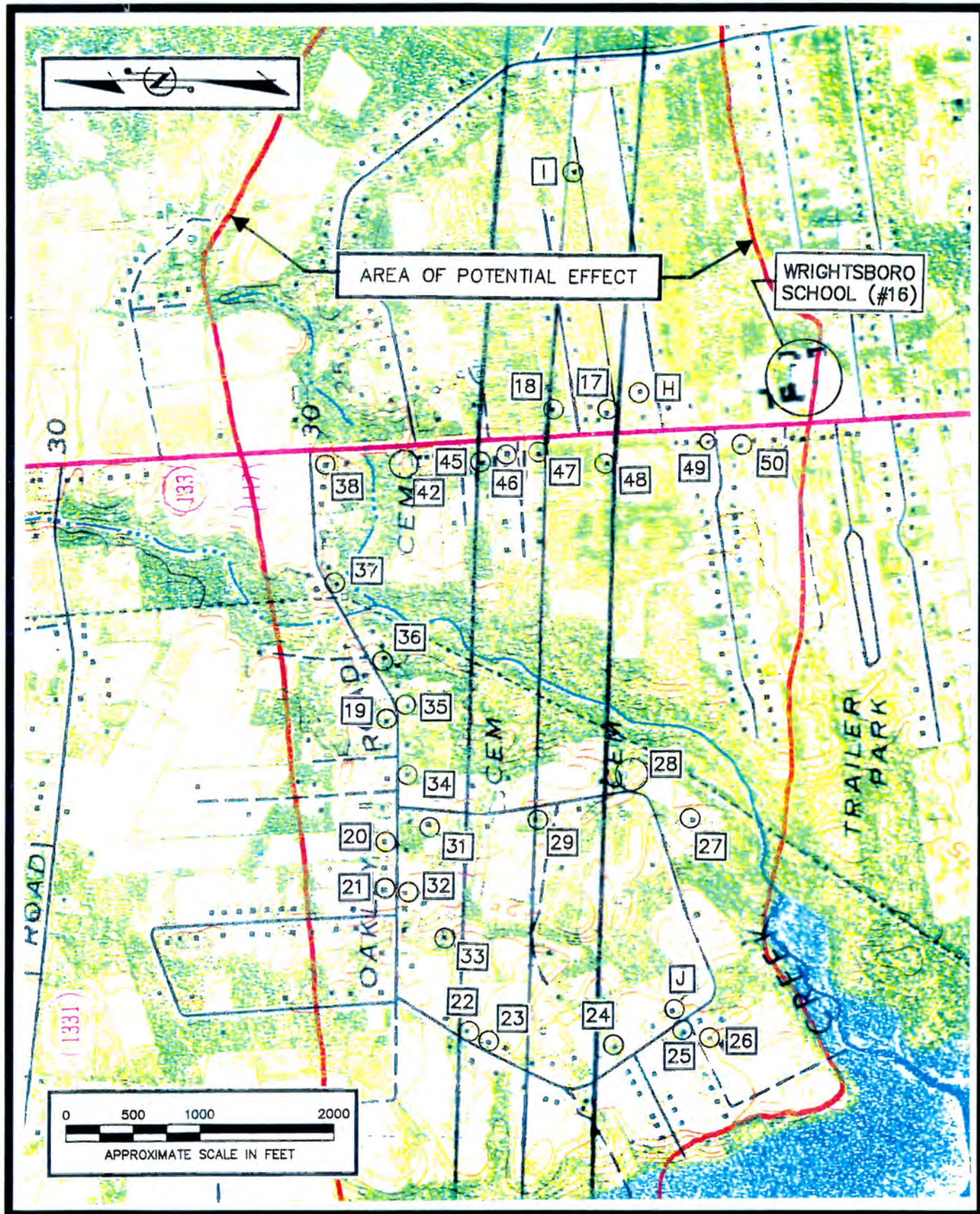


Figure 1F Area of Potential Effect and Property Inventory
 Source: Castle Hayne USGS Quad Map



PROPERTY A
West side of Blue Clay
Road across railroad
tracks, 0.3 miles north
of North Kerr Avenue,
Wrightsboro vicinity,
New Hanover County



PROPERTY B
West side of Castle
Hayne Road (US
117/NC 133), 0.3 miles
north of Hermitage
Road, Wrightsboro
vicinity, New Hanover
County



PROPERTY C
West side of Castle Hayne Road (US 117/NC 133), 0.4 miles north of Hermitage Road, Wrightsboro vicinity, New Hanover County



PROPERTY H
North side of Sandy Avenue, 0.05 miles east of Castle Hayne Road (US 117/NC 133), Wrightsboro vicinity, New Hanover County



PROPERTY I
West side of Holland
Road, 0.3 miles north
of Longleaf Drive,
Wrightsboro vicinity,
New Hanover County



PROPERTY J
East of Oakley Loop
Road opposite Ness
Drive, Wrightsboro
vicinity, New Hanover
County



PROPERTY K
East side of SR 1430,
0.6 miles north of SR
1431, Cedar Hill
vicinity, Brunswick
County



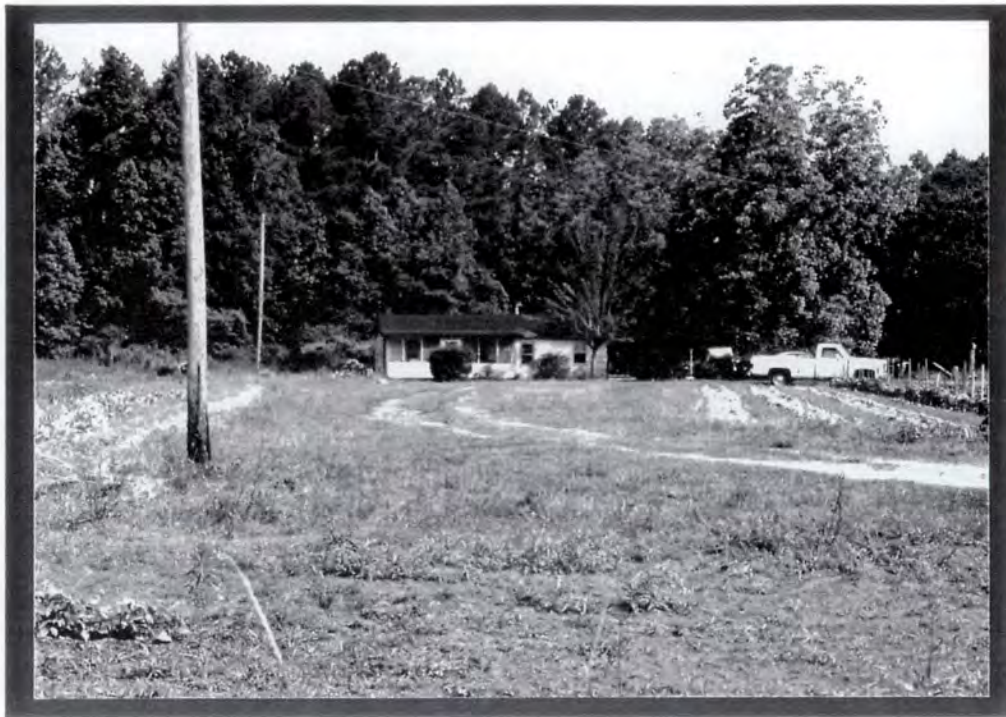
PROPERTY L
East side of SR 1430,
0.8 miles north of SR
1431, Cedar Hill
vicinity, Brunswick
County



PROPERTY N
West side of SR 1428,
0.15 miles north of
junction with SR 1426,
Phoenix vicinity,
Brunswick County



PROPERTY O
South side of SR 1428,
0.5 miles north of
junction with SR 1426,
Phoenix vicinity,
Brunswick County



PROPERTY #3
West side of Blue Clay
Road, 0.5 miles south
of NC 132,
Wrightsboro vicinity,
New Hanover County



PROPERTY #4
East side of Castle
Hayne Road (US
117/NC 133), 0.4 miles
north of Hermitage
Road, Wrightsboro
vicinity, New Hanover
County



PROPERTY #16
Wrightsboro School--
East side of Castle
Hayne Road (US
117/NC 133). 0.1 miles
north of North Kerr
Avenue, Wrightsboro
vicinity, New Hanover
County



PROPERTY #17
East side of Castle
Hayne Road (US
117/NC 133) at Teresa
Drive, Wrightsboro
vicinity, New Hanover
County



PROPERTY #18
East side of Castle
Hayne Road (US
117/NC 133) at Arlens
Drive, Wrightsboro
vicinity, New Hanover
County



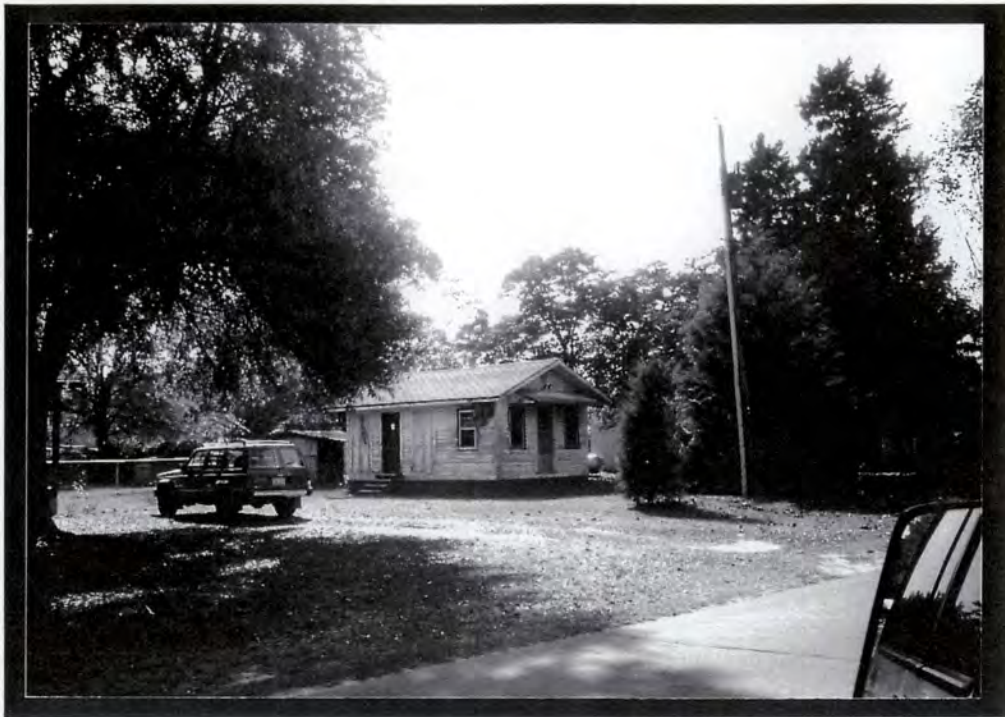
PROPERTY #19
North side of Oakley
Road, 0.1 miles east of
Oakley Loop Road,
Wrightsboro vicinity,
New Hanover County



PROPERTY #20
North side of Oakley
road, 0.05 miles west
of Oakley Loop Road,
Wrightsboro vicinity,
New Hanover County



PROPERTY #21
North side of Oakley
Road, 0.1 miles west of
Oakley Loop Road,
Wrightsboro vicinity,
New Hanover County



PROPERTY #22
East side of Oakley
Loop Road, 0.175
miles south of Oakley
Road, Wrightsboro
vicinity, New Hanover
County



PROPERTY #23
East side of Oakley
Loop Road, 0.2 miles
south of Oakley Road,
Wrightsboro vicinity,
New Hanover County



PROPERTY #24
East of Oakley Loop
Road opposite Fork
Drive, Wrightsboro
vicinity, New Hanover
County



PROPERTY #25
Northwest corner of
junction of Oakley
Loop Road and Ness
Drive, Wrightsboro
vicinity, New Hanover
County



PROPERTY #26
South side of Ness
Drive, 0.025 miles west
of Oakley Loop Road,
Wrightsboro vicinity,
New Hanover County



PROPERTY #27
South side of Oakley
Loop Road, 0.4 miles
south of Oakley Road,
Wrightsboro vicinity,
New Hanover County



PROPERTY #28
East side of Oakley
Loop Road, 0.3 miles
south of Oakley Road,
Wrightsboro vicinity,
New Hanover County



PROPERTY #29
West side of Oakley
Loop Road, 0.2 miles
south of Oakley Road,
Wrightsboro vicinity,
New Hanover County



PROPERTY #31
West side of Oakley
Loop Road, 0.025
miles south of Oakley
Road, Wrightsboro
vicinity, New Hanover
County



PROPERTY #32
South side of Oakley
road, 0.1 miles west of
Oakley Loop Road,
Wrightsville vicinity,
New Hanover County



PROPERTY #33
South side of Oakley road, 0.2 miles west of Oakley Loop Road, Wrightsboro vicinity, New Hanover County



PROPERTY #34
North side of Oakley Road, 0.075 miles east of Oakley Loop Road, Wrightsboro vicinity, New Hanover County



PROPERTY #35
South side of Oakley
Road, 0.35 miles west
of Castle Hayne Road
(US 117/NC 133) and
O a k l e y R o a d ,
W r i g h t s b o r o v i c i n i t y ,
N e w H a n o v e r C o u n t y



PROPERTY #36
South side of Oakley
Road, 0.25 miles west
of Castle Hayne Road
(US 117/NC 133) and
O a k l e y R o a d ,
W r i g h t s b o r o v i c i n i t y ,
N e w H a n o v e r C o u n t y



PROPERTY #37
South side of Oakley Road, 0.2 miles west of Castle Hayne Road (US 117/NC 133) and Oakley Road, Wrightsboro vicinity, New Hanover County



PROPERTY #38
Southwest corner of junction of Castle Hayne Road (US 117/NC 133) and Oakley Road, Wrightsboro vicinity, New Hanover County



PROPERTY #39
Reeves A.M.E. Zion
Church--East side of
SR 1430, 1.4 miles
north of junction with
SR 1431, Cedar Hill
vicinity, Brunswick
County



PROPERTY #40
East side of SR 1426,
1.0 miles south of
junction with SR 1430,
Phoenix vicinity,
Brunswick County



PROPERTY #42
West side of Castle Hayne Road (US 117/NC 133) opposite Holland Drive, Wrightsboro vicinity, New Hanover County



PROPERTY #45
West side of Castle Hayne Road (US 117/NC 133), 0.1 miles south of Holland Drive, Wrightsboro vicinity, New Hanover County



PROPERTY #46
West side of Castle
Hayne Road (US
117/NC 133), 0.125
miles south of Holland
Drive, Wrightsboro
vicinity, New Hanover
County



PROPERTY #47
West side of Castle
Hayne Road (US
117/NC 133), 0.15
miles south of Holland
Drive, Wrightsboro
vicinity, New Hanover
County



PROPERTY #48
West side of Castle
Hayne Road (US
117/NC 133), 0.175
miles south of Holland
Drive, Wrightsboro
vicinity, New Hanover
County



PROPERTY #49
West side of Castle
Hayne Road (US
117/NC 133), 0.1 miles
south of Whitman
Avenue, Wrightsboro
vicinity, New Hanover
County



PROPERTY #50
West side of Castle Hayne Road (US 117/NC 133), 0.1 miles north of Longleaf Drive, Wrightsboro vicinity, New Hanover County



PROPERTY #57
Goodman House and Doctor's Office--North side of SR 1414, 0.8 miles west of NC 17, Spring Hill vicinity, Brunswick County



PROPERTY #58
Down farm lane, south
side of SR 1414, 0.6
miles east of NC 87,
Spring Hill vicinity,
Brunswick County



PROPERTY #59
West side of US 17, 0.6
miles west of SR 1414,
Spring Hill vicinity,
Brunswick County