

Asheville Multiple Resource Area
Buncombe County

Survey and Planning Branch, Archeology and
Historic Preservation Section, N. C. Division
of Archives and History, Raleigh, NC 27611

BNRS
NAME: Coxe Avenue Buildings: B & B Motor Company Building

#7

LOCATION: 84-94 Coxe Avenue

OWNER: C. R. Bell
94 Coxe Avenue
Asheville, NC 28801

DESCRIPTION: The B and B Motor Company Building at the northeast corner of Coxe Avenue and Hilliard Street is a two-story structure of reinforced concrete and structural clay tile faced with stretcher bond brick and trimmed with tan limestone. The building's street elevations are divided into three sections. The most elaborate of these is directly on the corner and includes display windows on the first floor, triple windows on the second floor with six over six sash, and a high parapet with limestone coping ornamented with knobby finials. Piers between the display windows have alternating brick and limestone blocks, there is a broad, limestone string course between the two floors and there are limestone lintels over the second floor windows. The second section is just to the north along Coxe Avenue and its three bays duplicate the features of the corner section, except that at the parapet line there are overhanging bracketed eaves, and there are recessed panels between the first and second floors. The first floor display windows have also been altered. The third section is on Hilliard Street and is of plain, panelled brick construction and includes two garage door entrances. This section has metal factory sash with awning windows.

SIGNIFICANCE: The B. and B. Motor Company Building is the earliest of the auto showroom and service facilities on Coxe Avenue and one of the first structures to be built on the Avenue after its opening. Unlike later auto buildings on the Avenue, the B and B building is only two stories high, perhaps a reflection of land cost pressures that had yet to come or a relatively-limited demand for the Chevrolet dealer's autos in 1925. The B and B facility was organized much as modern dealerships are, with display and servicing taking place on the first floor. Like the other Coxe Avenue dealerships, it uses a corner location to maximum effect, with a street-level display of its showrooms and an attractively-ornamented facade. (over)

DATE: 1925
PHOTO NO.: N.78-2--780
UTM: 17-359140/3939520
ACREAGE: less than 1 acre
VERBAL BOUNDARY DESCRIPTION:

See Plat Map, Ward 4, Lot 198 3/4

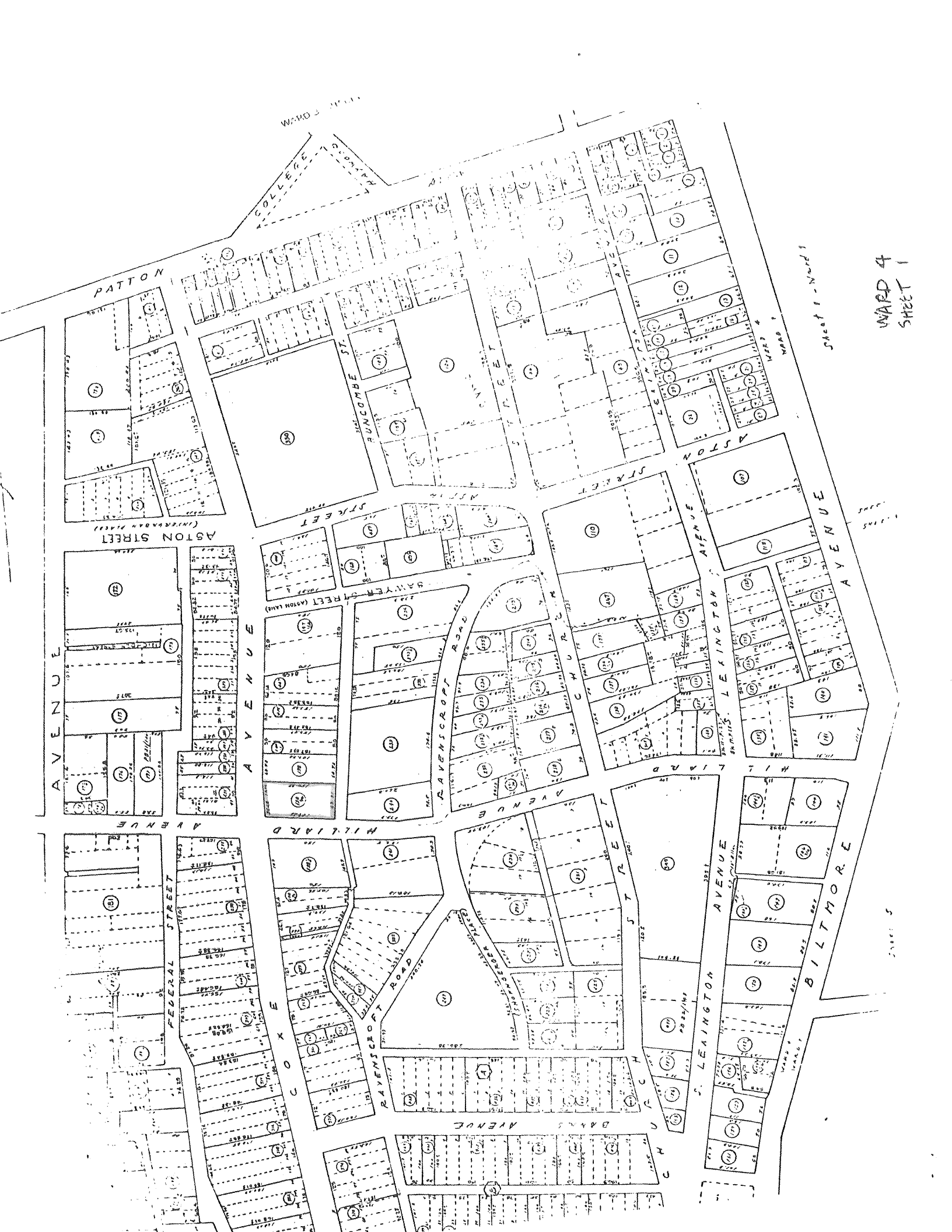
DATE RECORDED:
BY:

Bibliography

Sanborn Insurance Maps of Asheville, 1925 updated to 1945.

Asheville City Directories

Undated aerial photograph of Coxe Avenue in the Files of the Pack Memorial Library
(dated ca. 1925 by surveyor).



WARD 4 - SHEET 1

WARD 4
SHEET 1

Sheet 1 - Ward 4

SHEET 5

