

NORTH CAROLINA STATE HISTORIC PRESERVATION OFFICE
Office of Archives and History
Department of Cultural Resources

NATIONAL REGISTER OF HISTORIC PLACES

Old South Mebane Historic District

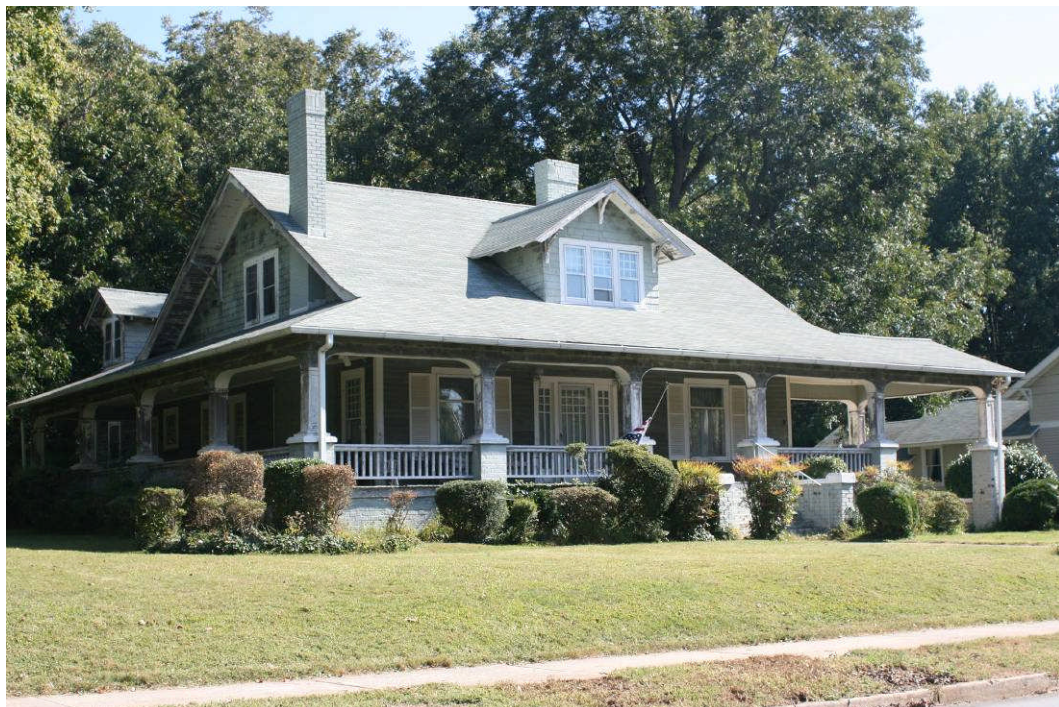
Mebane, Alamance County, AM1508, Listed 12/22/2011

Nomination by David Taylor

Photographs by David Taylor, October 2010



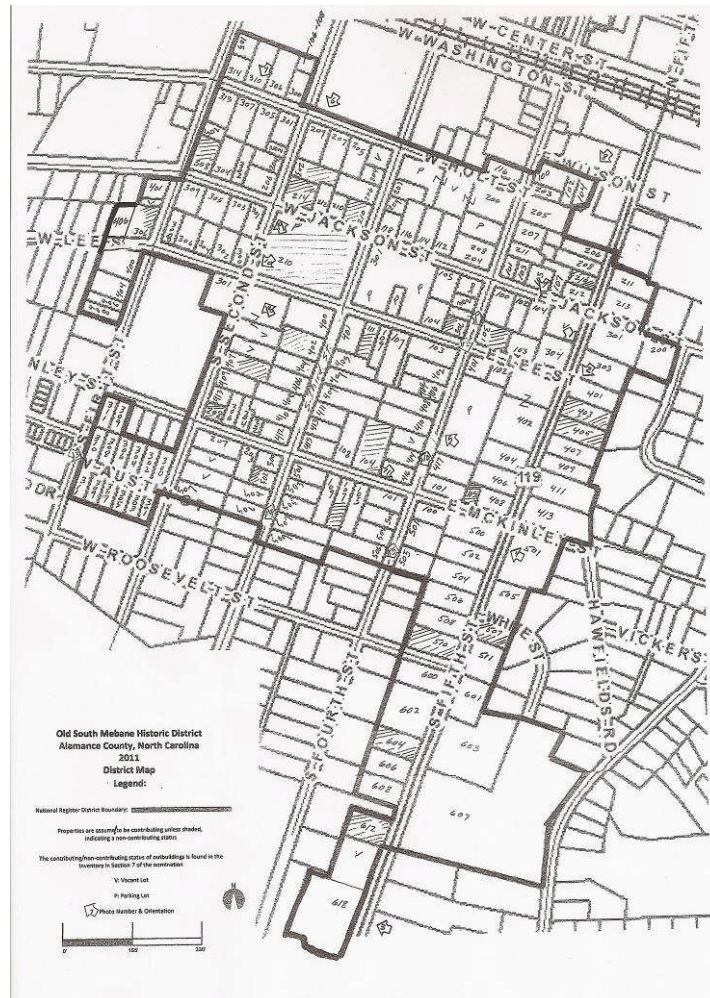
500 South Fifth Street



303 South Fifth Street



409 South Second Street



Historic District Map

United States Department of the Interior
National Park Service

National Register of Historic Places Registration Form

This form is for use in nominating or requesting determinations for individual properties and districts. See instructions in National Register Bulletin, *How to Complete the National Register of Historic Places Registration Form*. If any item does not apply to the property being documented, enter "N/A" for "not applicable." For functions, architectural classification, materials, and areas of significance, enter only categories and subcategories from the instructions. **Place additional certification comments, entries, and narrative items on continuation sheets if needed (NPS Form 10-900a).**

1. Name of Property

historic name Old South Mebane Historic District

other names/site number N/A

2. Location

street & number Generally bounded by Holt, S. First, S. Fifth, Austin, E. Wilson, and Roosevelt Streets

not for publication

city or town Mebane

vicinity

state North Carolina

code NC

county Alamance

code 001

zip code

27302

3. State/Federal Agency Certification

As the designated authority under the National Historic Preservation Act, as amended,

I hereby certify that this nomination request for determination of eligibility meets the documentation standards for registering properties in the National Register of Historic Places and meets the procedural and professional requirements set forth in 36 CFR Part 60.

In my opinion, the property meets does not meet the National Register Criteria. I recommend that this property be considered significant at the following level(s) of significance:

national statewide local

Signature of certifying official/Title

Date

North Carolina Department of Cultural Resources

State or Federal agency/bureau or Tribal Government

In my opinion, the property meets does not meet the National Register criteria.

Signature of commenting official

Date

Title

State or Federal agency/bureau or Tribal Government

4. National Park Service Certification

I hereby certify that this property is:

entered in the National Register

determined eligible for the National Register

determined not eligible for the National Register

removed from the National Register

other (explain):

Signature of the Keeper

Date of Action

Old South Mebane Historic District
 Name of Property

Alamance County, NC
 County and State

5. Classification

Ownership of Property
 (Check as many boxes as apply.)

Category of Property
 (Check only **one** box.)

Number of Resources within Property
 (Do not include previously listed resources in the count.)

<input checked="" type="checkbox"/>	private
<input type="checkbox"/>	public - Local
<input type="checkbox"/>	public - State
<input type="checkbox"/>	public - Federal

<input type="checkbox"/>	building(s)
<input checked="" type="checkbox"/>	district
<input type="checkbox"/>	site
<input type="checkbox"/>	structure
<input type="checkbox"/>	object

Contributing	Noncontributing	
255	72	buildings
0	0	sites
0	23	structures
0	0	objects
255	95	Total

Name of related multiple property listing
 (Enter "N/A" if property is not part of a multiple property listing)

Number of contributing resources previously listed in the National Register

N/A

N/A

6. Function or Use

Historic Functions
 (Enter categories from instructions.)

DOMESTIC/single dwelling

DOMESTIC/multiple dwelling

DOMESTIC/secondary structure

RELIGION/religious facility

EDUCATION/school

COMMERCE/TRADE/warehouse

Current Functions
 (Enter categories from instructions.)

DOMESTIC/single dwelling

DOMESTIC/ multiple dwelling

DOMESTIC/secondary structure

RELIGION/religious facility

RECREATION AND CULTURE/museum

LANDSCAPE/parking lot

GOVERNMENT/public works

COMMERCE/TRADE/professional

HEALTH CARE/clinic

7. Description

Architectural Classification
 (Enter categories from instructions.)

Colonial Revival

Craftsman

Late Gothic Revival

Queen Anne

OTHER/Period Cottage

OTHER/Ranch

OTHER/Minimal Traditional

NO STYLE

Materials
 (Enter categories from instructions.)

foundation: STONE

CONCRETE BLOCK

BRICK

walls: WOOD

BRICK

SYNTHETICS/vinyl

roof: ASPHALT

other: WOOD/weatherboard

METAL

Old South Mebane Historic District
Name of Property

Alamance County, NC
County and State

Narrative Description

(Describe the historic and current physical appearance of the property. Explain contributing and noncontributing resources if necessary. Begin with a **summary paragraph** that briefly describes the general characteristics of the property, such as its location, setting, size, and significant features.)

Summary Paragraph

The Old South Mebane Historic District is a compact, densely developed, nearly exclusively residential district of approximately 103 acres located south of the central business district of the city of Mebane, North Carolina. Mebane lies in the Piedmont area of North Carolina, and straddles the Alamance/Orange County line; this district lies entirely in Alamance County and is west of the county line. The community is located approximately ten miles east of the county seat of Graham and approximately forty-five miles northwest of the state capitol at Raleigh. The district consists of a total of 349 resources, of which 255 contribute to the character of the district and 95 are non-contributing elements, either due to alterations or to a date of construction outside the district's ca. 1900 to 1961 Period of Significance. The district incorporates a densely-developed grid of streets including South First through South Fifth streets, which run north-south and East and West Holt, Jackson, Lee, and McKinley streets, which intersect the aforementioned numbered streets¹ and run east-west. Austin Street extends for one block between South First and South Second streets and E. Wilson runs for one block between S. Fifth and S. Sixth streets. The nominated area is nearly topographically flat and consists primarily of domestic architecture ranging between one and two-and-one-half stories in height and generally are of wood frame construction; some houses are finished in historic brick veneer. Mixed within the district's residential architecture are a series of churches and a former school. The district's domestic architecture represents the Queen Anne, Colonial Revival, Craftsman, Minimal Traditional, Period Cottage, and Ranch styles, along with houses that represent no formal architectural style but which represent the building traditions of this community during the Period of Significance. Religious architecture embraces both the Gothic Revival and Colonial Revival styles. The district has nearly uniform front-lot setbacks on many of the streets, all of which are paved and most of which feature concrete sidewalks. Street lighting utilizes lighting devices mounted onto utility poles and powered by overhead wiring. Most streets have rights-of-way of sixty feet. Landscaping varies throughout the district although the pride of ownership is apparent on virtually every street in the district. Some properties have expansive lawns, while others exhibit modest front and back yards and little side-yard setback. In addition to the principal buildings occupying the lots in the district, a variety of dependencies are found in the nominated area, ranging from substantial carriage houses and barns to modest garages dating from throughout the Period of Significance. Dependencies are both of wood frame and masonry construction and are typically gable-roofed. The integrity of the district is high, retaining the composite qualities of location, design, setting, materials, workmanship, materials, feeling, and association.

Outside the district boundaries is development which post-dates the Period of Significance. To the south, west, and east, this development is primarily residential, and north of the district are non-historic commercial and governmental buildings, beyond which is the downtown.

Narrative Description

Most of the individual houses in the district are of wood frame construction, in some cases veneered with red or blonde brick. Most churches are assumed to employ masonry bearing-wall construction, finished in red brick. Foundations are characteristically of brick and stone, both dressed and of coursed rubble; newer buildings employ concrete block foundations, both smooth-dressed and rock-faced. In some cases the foundations have been parged and are not open to inspection. Roof forms vary throughout the district, with the gable roof being the preferred form, both as gable-front and side-gable roofs, with finishes characteristically of asphalt shingles, which likely replaced earlier claddings of slate or standing-seam metal. Most buildings retain their original chimneys, typically of brick and located both at gable ends and on the interior of the roof slopes. In other cases, chimneys are not present, likely the result of re-roofing or the retro-fitting of heating systems. Windows are nearly exclusively flat-topped, with modest window heads. Many houses retain original windows, with the one-over-one sash configuration being the favored window arrangement. Others exhibit replacement sash, including both one-over-one units and multi-light units which usually lack true divided lights. The religious architecture of the district employs both the Gothic Revival style, with its characteristic lancet-arched window and door form and the Colonial Revival style, which employs flat-topped windows. The church windows of the district typically feature multi-colored religious art glass. Mebane High School is also built in the Colonial Revival style.

¹ Fourth Street serves as the demarcation between "East" and "West" in the naming of the streets.

Old South Mebane Historic District
Name of Property

Alamance County, NC
County and State

Many of the houses in the Old South Mebane Historic District retain their original wood porches which are as distinctive as the individual houses themselves. Porches in this district range from simple stoops, sometimes shielded by hoods, to open shed- and hip-roofed porches and commodious wrap-around porches with classically-derived detail. Porches are often enclosed within replacement metal railings and within balustrades with square and turned balusters and may incorporate masonry piers upon which rest the porch supports. Replacement metal porch supports are found throughout the district as well. Some porches retain their original lattice skirting, allowing for ventilation for the dark areas beneath the porch floor.

The architecture of the Old South Mebane Historic District represents a diversity of the styles popular throughout the Period of Significance. Some of the most imposing domestic architecture of the district is executed in the Craftsman style, most commonly interpreted as substantial side-gable bungalows with recessed engaged front porches and dormers above. These include the house at 303 South Fifth Street. Less imposing Craftsman-style houses in the district include 401 S. Fifth Street, 410, and 506 S. Fourth Street, 501 S. Third Street, 104 E. Jackson Street, and 302 W. Lee Street. The Colonial Revival style is represented in the houses at 408 and 602 S. Fifth Street. Colonial Revival-style houses in the district range from simply-detailed houses with only hints of Colonial-era features to substantial formally-designed Georgian Revival-style homes such as those at 607 and 618 S. Fifth Street. The Cape Cod-style house, a variant of the Colonial Revival style, is seen at 405 S. Third Street and 417 S. Fourth Street. A locally-distinctive example of the Dutch Colonial Revival style, with its characteristic gambrel roof, is located at 500 S. Fifth St.

Also seen in the district is the Queen Anne style, with its irregular form, which appears on most of the district houses with only minimal detailing. The district's best example of the Queen Anne style is seen at 413 S. Fifth Street. Other examples include 411, 501, 504, and 506 S. Fifth Street, 211 S. Fourth Street, 209 and 307 W. Holt Street, 305 W. Jackson Street, and 103 W. Lee Street. Unlike some early twentieth-century districts which are dotted with the American Foursquare house type, that house form is seen in this district only at 414 S. Fourth Street.

The district also contains representatives of the Period Cottage style, a domestic mode typically one- or one-and-one-half stories in height, of wood and brick construction, with front- and side-gable roofs, flat-topped windows, and modest embellishment. In many cases these house have prominent chimneys on gable ends or on the facade. Examples in the Old South Mebane Historic District include 407 and 502 S. Fifth St. and 112 W. Jackson St.

Many of the district's houses dating from the 1930s through the end of the Period of Significance represent the Minimal Traditional style. This style is characterized by domestic architecture which is most often rectangular in form and asymmetrically-massed, often with side wings and projecting wings on the facade and with a shallow- to medium-pitched gabled roof--usually without deep eaves—and a small entry stoop or a porch with simple pillars or columns. Products of the automobile age, Minimal Traditional-style houses may incorporate garages into the design of the house or may have detached garages adjacent to or behind the main house. Representative examples in the Old South Mebane Historic District include 203 S. Fourth Street and 103 E. Jackson Street.

The Ranch house, a product of the post-World War Two years, are almost universally one story in height, with low-pitched hipped or side-gable roofs, broad overhanging eaves, and typically are sparse in their ornamentation. Windows may be double-hung or sliding, and garages are often integrated into the façade of the house. In this district Ranch houses appear at 505, 511, 601, and 603 S. Fifth St., 102 E. Lee St., and 306 W. Lee St.

Examples of repetitive vernacular house types, likely erected as workers' housing, include the single-story gable-front houses at 105, 108, and 109 W. McKinley Street and a series of hip-roofed single-story houses at 302, 303, 308 Austin Street. Other common vernacular forms found in the district include gable-and-wing and plain 1- and 2-story side-gabled houses. Examples of the gable-and-wing house include 501 S. Fourth St., 207 W. Holt St., and 107 W. Lee St. Examples of 1-story side-gabled houses include 105 S. First St. and 101 E. Jackson St. A 2-story example is found at 301 W. Holt St.

As noted above, ecclesiastical design includes the Gothic Revival style, represented by the Mebane Presbyterian Church at 402 S. Fifth Street, the far less imposing Primitive Baptist Church at 308 W. Lee Street, and the First Baptist Church of Mebane at 301 S. Third Street. The Colonial Revival style is represented by the Mebane Methodist Church at 200 S. Fourth Street.

Little demolition has occurred in the district. Some surface parking has been constructed around the district's churches and around the former school located at 210 W. Lee Street. The vast majority of the district's individual

Old South Mebane Historic District
Name of Property

Alamance County, NC
County and State

properties are extremely well maintained. Modifications within the district include the installation of non-historic siding (typically vinyl), although the original siding may be assumed to remain beneath the non-historic material. In addition, replacement windows are seen in the Old South Mebane Historic District, but typically the replacement sash repeat the dimension and form of the original window units.

The Period of Significance of the Old South Mebane Historic District begins c. 1900, the approximate date of construction of the district's earliest buildings, and extends through 1961, reflecting the continued development of the neighborhood throughout this span of years. Contributing buildings in this district are those which date from within the Period of Significance and retain integrity in a majority of its composite qualities. Non-contributing elements in the district are those dating from outside the Period of Significance or which have forfeited integrity because of incompatible alterations, such as the removal of front porches or other character-defining features, large additions on principal elevations, or the exterior cladding in a material completely foreign to the original material or with a different orientation. Thus, a wood frame house with vinyl siding may be contributing while a wood frame house with artificial brick or a recently-installed brick veneer would be non-contributing.

The following inventory is organized alphabetically by street name and numerically by street number within each street. Dates are generally based on county tax records and on physical and stylistic characteristics; dates of dependencies are based on physical characteristics.

West Austin Street

House **ca. 1936** **Contributing Building**
300 W. Austin Street

This 1-story vernacular hip-roofed house is of wood construction, finished in vinyl siding, with a slightly-recessed gable-front porch offset on the east side of the façade, supported by replacement wood posts and featuring replacement steps and railing. Windows are flat-topped, with replacement sash and with some windows having fixed exterior shutters. A chimney of brick penetrates one of the rear slopes of the roof.

House **ca. 1950** **Contributing Building**
301 W. Austin Street

This is a 1-story vernacular house of wood construction, finished in vinyl siding, with gable-front roof. Centered on the façade is a gable-front porch, supported by replacement decorative metal posts and enclosed with a metal railing. A red brick chimney rises on the east slope of the roof. And windows are flat-topped with replacement sash.

Shed **ca. 2000** **Non-Contributing Building**

Modern one-story front-gabled modular wood shed.

Carport **ca. 2000** **Non-Contributing Structure**

Modern open-sided front-gabled metal carport.

House **ca. 1936** **Contributing Building**
302 W. Austin Street

This 1-story hip-roofed house is of wood, finished in vinyl siding, with a parged foundation, a 2-bay façade, and the entrance offset on the east side of the façade. The entrance is shielded by a slightly-recessed shed-roofed porch with modern wood supports and balustrade. The windows are flat-topped, with replacement sash; some windows have fixed exterior shutters. This property is similar to the house at 308 West Austin Street.

Carport **ca. 2000** **Non-Contributing Structure**

Open-sided front-gabled carport of wood construction at rear of lot.

House **ca. 1936** **Contributing Building**
303 W. Austin Street

This is a 1-story hip-roofed vernacular house of wood, finished in vinyl shiplap siding, with a shed-roofed extension of the roof providing a roof for a slightly-recessed porch on the east side of the façade; the porch is enclosed with a metal railing and is supported by sheathed square posts and sheathed knee brackets. Windows are flat-topped with replacement sash and a non-historic garden window has been added on the east elevation. This house is similar to the houses at 308, 309 and 302 West Austin Street.

Old South Mebane Historic District
Name of Property

Alamance County, NC
County and State

House **ca. 1936** **Contributing Building**
304 W. Austin Street

This 1-story gable-front vernacular house is frame, finished in vinyl siding, with a 2-bay façade and the entrance offset on the east side of the façade. The entrance is shielded by a slightly-recessed shed-roofed porch with sheathed square posts with sheathed knee brackets and incorporates a modern wood balustrade. Windows are flat-topped, with replacement sash and with some windows having fixed exterior shutters. This property is similar to the houses at 302, 306, 305, and 310 West Austin Street.

House **ca. 1936** **Contributing Building**
305 W. Austin Street

This 1-story gable-front vernacular house is of wood construction, finished in vinyl siding, with a 2-bay façade and an entrance offset on the west side of the façade. The entrance is shielded by a slightly-recessed shed-roofed porch supported by square posts with knee brackets and features a modern wood balustrade. Windows are flat-topped with replacement sash and with some windows having fixed exterior shutters. This property is similar to the houses at 302, 306 and 310 West Austin Street.

House **1930** **Contributing Building**
306 W. Austin Street

This 1-story gable-front vernacular house is of wood, finished in vinyl siding, with a 2-bay façade and the entrance offset on the east side of the façade. The entrance is shielded by a slightly-recessed shed-roofed porch supported by sheathed square posts and knee brackets and features a modern wood balustrade. Windows are flat-topped with replacement sash and with some windows having fixed exterior shutters. A gabled addition, somewhat shorter than the main block of the house, is on the rear (north) elevation. This property is similar to the houses at 310 and 304 West Austin Street.

Garage **ca. 1930** **Contributing Building**

At the rear of the lot is a front-gable garage of wood construction, finished in vinyl siding, with a shed-roofed addition.

House **ca. 1936** **Contributing Building**
307 W. Austin Street

This is a 1-story gable-front vernacular house of wood, finished in asbestos shingle siding, with a 2-bay façade and the entrance offset on the west side of the façade. The entrance is shielded by a shed-roofed slightly-recessed porch supported by square wood posts, with exposed rather tails and a modern wood balustrade. Windows are flat-topped with replacement sash. This house is similar to the houses at 302, 306 and 310 West Austin Street.

House **1929** **Contributing Building**
308 W. Austin Street

This is a 1-story hip-roofed vernacular house of wood construction, finished in vinyl siding, with a shed-roofed extension of the roof providing a roof for a slightly-recessed porch on the east side of the façade; the porch features replacement wood posts and a replacement latticed railing. A substantial red brick chimney has been added on west side of the façade. Windows are flat-topped with replacement sash and with some windows having fixed exterior shutters. This house is similar to the houses at 308, 309, 303, and 302 West Austin Street.

House **ca. 1936** **Contributing Building**
309 W. Austin Street

This 1-story hip-roofed vernacular house is of wood construction, finished in asbestos shingles, with a shed-roofed extension of the roof providing a roof for a slightly-recessed porch on the east side of the façade; the porch features knee brackets and sheathed square posts along with a replacement wood railing. There are two interior brick chimneys. Windows are flat-topped 6/6, with original sash; some windows exhibit exterior fixed shutters. This resource is similar to the houses at 308 and 302 West Austin Street.

House **ca. 1936** **Contributing Building**
310 W. Austin Street

This is a 1-story gable-front vernacular house of wood construction, finished in vinyl siding, with a 2-bay façade and the entrance offset on the east side of the façade. The entrance is shielded by a slightly-recessed shed-roofed porch with sheathed square posts and sheathed knee brackets; modern wood balustrade. Windows are flat-topped, with replacement sash and with some windows having fixed exterior shutters. This house is similar to the houses at 304 and 306 West Austin Street.

Old South Mebane Historic District
Name of Property

Alamance County, NC
County and State

House **ca. 1936** **Contributing Building**
311 W. Austin Street

This single-story vernacular gable-front house is of wood, finished in vinyl siding, with a central gable-front porch supported by what appear to be the original wood posts with caps. Exposed rafter tails are under the eaves of the house and the porch. Windows are flat-topped with replacement sash and a red brick chimney penetrates the slope of the roof.

South Fifth Street

House **ca. 1936** **Contributing Building**
206 S. Fifth Street

This property is a 1-story Minimal Traditional-style house, converted for use as professional offices. It is finished in polychrome red brick and incorporates a side-gable roof and a glass-enclosed arcaded shed-roofed side porch on the north elevation. The principal entry is beneath a gabled hood on the east elevation, with a round-arched double-header-course brick surround, retaining the original wood door with lower panels under six lights. The main entry is accessed from a small stoop with a decorative metal balustrade under a gabled hood. The house has flat-windows with original 6/1 sash and some windows exhibiting exterior fixed shutters.

House **ca. 1930** **Contributing Building**
208 S. Fifth Street

This is a 2-story hip-roofed Colonial Revival-style house of wood, possibly with a center-hall plan, finished in vinyl siding. The house has been converted for professional office use. It has a three-bay façade with a centered entry, shielded by a hip-roofed portico supported by Doric columns. Fenestration is flat-topped, with multi-light sash and three-part windows on the façade. Windows are 6/6, 6/1, 9/1, and 12/1. A hip-roofed side porch is accessed from the south elevation. Two painted brick chimneys, one interior and one exterior, are present, one each on the north and south elevations.

House **ca. 1930** **Non-Contributing Building**
210 S. Fifth Street

This is a 1-story vernacular house of wood, finished in vinyl siding, with a side-gable roof and a side-gable-roofed wing with a shed-roofed porch. Windows are flat-topped and three-part, with replacement multi-light sash. An exterior painted brick chimney is present. A taller gabled rear ell peaks over the original roofline and a complex roof system suggests a major modification from the original form, with a subsequent loss of integrity.

House **ca. 1955** **Contributing Building**
211 S. Fifth Street

This property is a 1-story Ranch house finished in red brick with a low-pitched side-gable roof and overhanging eaves. The main entrance is offset on the façade, featuring a recessed entry accessed from a brick stoop, a solid multi-paneled door flanked by sidelights on one side. Most windows are 4/4, some with replacement sash; a slightly projecting 3-part window is on the façade. Set back on the north side of the façade is a screened-in side-gabled porch.

House **ca. 1920** **Contributing Building**
212 S. Fifth Street

This is a one-story vernacular side-gable roofed house with a forward-projecting gable-end wing offset on the south side of the façade. It has vinyl siding, a parged foundation, and interior brick chimneys. A shed-roofed front porch is supported by modest replacement wood posts and is enclosed within a replacement wood balustrade with square balusters. The principal entry features a two-light-over-panel door and exposed rafter tails and purlins are under the eaves. The house has flat-topped 1/1 windows, with replacement 1/1 sash, and exterior fixed shutters.

House **ca. 1955** **Contributing Building**
213 S. Fifth Street

The property is a 2-story side-gable-roofed Colonial Revival-style residence finished in red brick with exterior brick chimneys, a 3-bay façade, and a two-story gable-end projecting entry bay with a centered entrance enframed within a frontispiece with a keystone, incorporating a four-panel and diamond-paned door. A Palladian window is centered on the second story above the front door. The outer bays of the first story on the façade contain bay windows. Partial returns of the cornice are found on the gable ends. Other than the Palladian window, windows are flat-topped, with original 8/8 sash. A screened-in shed-roofed side porch of wood construction is on the south elevation.

Old South Mebane Historic District
Name of Property

Alamance County, NC
County and State

House **ca. 1922** **Contributing Building**
301 S. Fifth Street
This is a 1½-story Colonial Revival-style house finished in square-butt wood shingles, with a side-gable roof which shields an engaged front porch supported by oversized Doric columns. A broad shed dormer is centered on the façade and a one-story shingled gabled wing on the north side features 6/6 sash and French doors; windows elsewhere are 1/1 sash. The first story is finished in stone and an exterior gable-end rock-faced stone chimney is on the north elevation. The foundation is of stone and stone steps access the front porch.

Garage **ca. 1922** **Contributing Building**
A 1-story side-gabled garage, finished in stone to match the house, and incorporating a side-gabled addition of wood, with an overhead garage door, is located at the rear of the lot and is accessed from E. Jackson Street.

Carport **ca. 1970** **Non-Contributing Structure**
A gable-front open-sided carport is located at the at end of the lot.

House **ca. 1919** **Contributing Building**
303 S. Fifth Street
This is a 1½-story Craftsman-style house of substantial scale, with a side-gable roof penetrated by exterior and interior brick chimneys and a centered gable dormer on the façade. The first story is finished in weatherboard, the second story and porch in square-butt wood shingles. Knee bracing is present under the eaves of the house and of the dormer. The roof extends beyond the plane of the building and incorporates a wrap-around porch with curvilinear spandrels and a side-gabled porte-cochere on the south elevation. The porch is supported by paneled wood posts resting on brick piers and is enclosed with a wood balustrade with square balusters. Windows are flat-topped, some multi-light/1 and the windows on the first story of the façade are asymmetrical 1/1. The main entrance is centered on the façade, and features a Craftsman-style entry with matching glazed sidelights. A rear wing incorporates gable dormers.

Garage **ca. 1922** **Contributing Building**
Wood frame weatherboard-finished front-gable garage with an open-sided shed-roofed side bay and double-leaf door; located at the end of a driveway behind the main house.

House **ca. 1928** **Contributing Building**
304 S. Fifth Street
This is a 1-story Craftsman-style house of wood, finished in vinyl siding, with a gable-front roof, with paired gabled projections on the south elevation. The façade incorporates both a shed-roofed porch and an open extension of the porch which forms a patio. The porch and patio are within a wood balustrade with square balusters and red brick piers. The patio is accessed from the inside by a double set of French doors. There are flat-topped windows with multi-light/1 sash, including fixed multi-light horizontal windows in the gable ends. Exposed purlins are visible under the eaves and an interior red brick chimney penetrates one of the slopes of the roof. A porte-cochere is on the north elevation, formed by an extension of the porch roof.

Garage **ca. 1930** **Contributing Building**
Gable-front garage with double-leaf garage doors located at the rear of the lot.

House **ca. 1922** **Contributing Building**
401 S. Fifth Street
The property is a 1½-story Craftsman-style house, with a side-gable roof, finished in weatherboard on the first story and square-butt wood shingles above, with a forward-projecting gable-end wing on the south side of the façade and a shed-roofed porch supported by recessed-paneled wood posts resting on brick piers, enclosed with a wood balustrade with square balusters. The original glazed and paneled door is offset on the façade. An exterior step-shouldered brick chimney is on the north elevation and a gable dormer is on the façade. Knee bracing is present under the eaves. Windows are flat-topped, 1/1 sash, and multi-light casement. A small gabled side wing finished in asbestos shingles is on the south elevation near the rear of the house.

Mebane Presbyterian Church **1914; 1926; 1958** **Contributing Building**
402 S. Fifth Street
This is a complex incorporating a 1914 Gothic Revival-style brick church with a 1958 Colonial Revival-style addition. The original church fronts on Lee Street, while the newer section faces South Fifth Street and was built on the site of the former Manse. Paved parking is west of the newer section, along S. Fourth Street. The older hipped- and gable-roofed section is articulated by lancet-arched and flat-lintel fenestration with religious art glass with tracery and also features a crenellated square corner tower containing the original entry doors with a lancet-arched transom, art glass oculus windows midway up the tower, and a belfry with paired louvered lancet-arched openings on each side. Stepped corbel

Old South Mebane Historic District
Name of Property

Alamance County, NC
County and State

tables of brick are beneath the eaves. Other features include stone lintels, water table, and window sills, a metal roof, parapet walls, double-leaf doors, brick door and window hoods, keystones over the doors, and stone steps. The newer section is temple-form, with a Corinthian portico with a sunburst motif in the pediment of the portico, 6/6 sash on the façade and multi-light under flat arches, and a 3-stage brick tower with a concave cross-topped steeple and belfry. The side entrances of this section are pedimented and the main entrance has a broken-pediment surround with a transom over a double-leaf door. The main block of this section is flanked by 2-story gabled wings. The two are linked by a covered walkway. The church's website records:

The Mebane Presbyterian Church, one of 153 churches in Salem Presbytery, was organized on September 17, 1868. The organization was urged for two reasons: First, there was no church in the immediate area to bring religious services and training to the residents. Second, the boys of nearby Bingham School had to walk over four miles to either Hawfields Presbyterian Church or Crossroads Presbyterian Church to worship. The church's twelve charter members were: Maj. Robert Bingham, Mrs. Bettie Ann Mebane Holt, Dr. Benjamin Franklin Mebane, Mrs. Della Worth Bingham, Maj. William B. Lynch, Mrs. Fannie Kerr Mebane, Col. William Bingham, Mrs. Rebecca M. Lynch, Miss Martha Mebane, Mrs. Owen White Bingham, Mrs. Attelia Yancey Mebane, and Miss Alice White. The first small church building was located about half a mile east of town, at the corner of East Washington and South Tenth Streets, on the edge of Oakwood Cemetery. It served the community for over forty years. Church membership increased steadily, and eventually the need for a larger building was recognized. The Rev. Robert W. Hines urged the church to move into town, and a committee was appointed April 22, 1906, to consider a site. In 1914, a building was erected at the corner of Lee and Fifth streets, with a new manse adjacent to it. This building, dedicated in 1917, served as sanctuary and educational building for 44 years. An addition on the west elevation was built in 1926. Also that year, the Women of the Church raised \$1,781 for the installation of a six-rank organ built by Henry Pilcher's Sons of Louisville, Kentucky. The 1926 building was renovated in 1977 and renamed the Baker Building, in honor of Dr. William M. Baker, pastor from 1930 to 1955. In 1958 the sanctuary was converted into McSween Hall, a fellowship hall named in honor of the Rev. Allen C. McSween, pastor at that time. The building also houses a parlor, youth room, historical room, Boy Scouts meeting areas, and other facilities. The present sanctuary, located on the site of the former manse, was dedicated in 1958. The Women of the Church donated the nave chandeliers. A breezeway was built to connect the Baker Building to the sanctuary building, and was dedicated May 17, 1981.

House **ca. 1991** **Non-Contributing Building**
403 S. Fifth Street

The property is a 2-story non-historic side-gable houses finished in vinyl siding and shingles with a forward-projecting two-story bay on the south side of the façade. This bay has chamfered corners and is attached to a wrap-around porch, partially enclosed on the north side, with replacement wood supports, a new spindle frieze, and a modern wood balustrade. Imbricated shingles are in the gable ends and windows employ 1/1 sash. A one-story hip-roofed side porch is on the south elevation. County tax records indicate that it was erected in 1991.

House **ca. 1900** **Contributing Building**
404 S. Fifth Street

This is a 2-story Queen Anne-style residence of wood, finished in weatherboard, with a steeply-pitched hipped roof of pressed metal shingles and a wide frieze board. The entry door has a single sidelight with a single pane over panels. A forward-projecting gable-front wing is on the south end of the façade, with a pointed-arched louvered vent in the gable end. A 2-story gabled wing is located on the north elevation as well. Extending across the façade is a 1-story hip-roofed porch supported by slender Doric columns. The windows are flat-topped, 1/1, with some replacement sash; some windows retain historic operable louvered shutters and red brick chimneys penetrate the slopes of the hipped roof.

House **ca. 1985** **Non-Contributing Building**
405 S. Fifth Street

This is a 1-story L-shaped Neo-Colonial Revival-style house of wood construction, finished in vinyl siding, with a shed-roofed front porch in the angle of the ell on the façade. The porch features square posts and a Chippendale-influenced wood balustrade. A substantial red brick exterior gable-end brick chimney is located on the south elevation and a projecting bay on the north side of the façade incorporates a rectangular bay window. The windows employ 6/9 sash and exterior fixed shutters. A one-story sunroom is on the rear (east) elevation and a side entrance on the south side includes a wood deck. County tax records indicate that the house was built in 1985.

Old South Mebane Historic District
 Name of Property

Alamance County, NC
 County and State

Shed A shed of wood construction with a rearward-sloping shed roof.	ca. 1985	Non-Contributing Building
Shed A small shed of wood construction, located at the end of a paved driveway.	ca. 1985	Non-Contributing Building
House 406 S. Fifth Street This house is a 2-story Colonial Revival-influenced residence of wood, finished in weatherboard. The intersecting front- and side-gabled roofs are finished in standing-seam metal. The principal entrance is offset on the façade and is located in a gable-front section with returns of the cornice. The entry is articulated by attenuated pilasters, is set within art glass sidelights, and is capped with a semi-elliptical fanlight, also of art glass. A front porch extends across the three bays associated with the entry door and is shielded by a front gable roof with a circular vent in the pediment. It is supported by Doric columns. The windows have multi-light sash and operable exterior louvered shutters. There is an exterior brick chimney as well as an attached front-gabled garage with two overhead garage doors on the south elevation.	ca. 1900	Contributing Building
House 407 S. Fifth Street The property is a 1½-story wood frame Period Cottage, finished in weatherboard, with a side-gable roof with a hip-roofed dormer and two forward-projecting gable bays offset on the façade along with a bay window; one of the bays has a “cat-slide” roof. A flat-roofed porte-cochere of brick is on the north side, with a roof balustrade. The windows are 4/4 and 6/6, with original sash retained. A recessed corner porch and entry are on the facade, along with an interior brick chimney.	ca. 1924	Contributing Building
Barn/carriage house 1-story front-gable-roofed weatherboard-finished barn/carriage house at the rear of the lot.	ca. 1920	Contributing Building
House 408 S. Fifth Street This house is a 2-story brick-finished Colonial Revival-style residence with a side-gable roof and a 3-bay façade with the main entrance offset on the south end, suggestive of a side-passage interior plan. The entry door is shielded by a portico with semi-circular intrados and cornice returns and is supported by Doric columns and pilasters. Exterior gable-end brick chimneys are on both gable ends. A two-story gabled wing and what appears to be a 1-story sunroom are located on the south gable end. The sunroom is flat-roofed and a second-story door in the gabled wing leads to its roof, which incorporates a roof railing of decorative metal. Windows are flat-topped with original 6/6 sash.	ca. 1930	Contributing Building
Garage Gable-front garage accessed from East McKinley Street.	ca. 1930	Contributing Building
House 409 S. Fifth Street The property is a 1½-story Craftsman-influenced residence of wood construction with a front-gable roof penetrated by two exterior brick chimneys, with a front-gable porch supported by attenuated Doric columns, which extends across a portion of the façade and south elevation. The windows incorporate multi-light sash over one, including some upper units with geometric lights. Exposed purlins are under the eaves. The house also has a gable-end side wing and gabled dormers on either side of the main roof.	ca. 1910	Contributing Building
Storage building Gable-roofed dependency clad in plywood sheeting.	ca. 1990	Non-Contributing Building
Shed Gambrel-roofed prefabricated metal shed.	ca. 1980	Non-Contributing Building
House 411 S. Fifth Street This is a 2-story hip-roofed Queen Anne-style residence of wood construction, finished in vinyl siding and a metal roof, with projecting gabled wings on the façade and side elevation. Within the L-shaped façade is a wrap-around porch, supported by attenuated Doric columns and enclosed within a wood balustrade with square balusters. Beside the main entrance is an oculus with art glass. There are one- and two-story rearward projecting ells and windows incorporate replacement 1/1 sash and exterior fixed shutters. Two brick chimneys with corbelling penetrate the roofline.	ca. 1900	Contributing Building
Shed Small shed of wood construction, located near the rear property line.	ca. 1930	Contributing Building

Old South Mebane Historic District
Name of Property

Alamance County, NC
County and State

Shed Small shed of wood construction located near the rear property line.	ca. 1930	Contributing Building
House 413 S. Fifth Street This is a 2-story Queen Anne-style residence of wood, finished in vinyl siding, with a hipped roof, an offset front gable with partial returns of the cornice on the north side of the façade, and a semi-hexagonal corner tower on the south side of the façade. A substantial wrap-around porch incorporates a pediment over the main entry, and is supported by Doric columns and enclosed within a wood balustrade with square balusters. The main entrance is enframed within art glass sidelights. There are two interior corbelled brick chimneys and windows with replacement sash and fixed shutters.	ca. 1900	Contributing Building
Shed Shed of wood construction located in back yard of main house.	ca. 1950	Contributing Building
Shed Shed of wood construction located in back yard of main house.	ca. 1950	Contributing Building
Garage Gable-end-oriented garage accessed from East McKinley Street.	ca. 1950	Contributing Building
House 500 S. Fifth Street This is a distinctive and minimally-altered gambrel-roofed Dutch Colonial Revival-style house of 1½ stories, finished in weatherboard and wood shingles, with an intersecting gambrel-roofed wing dominating the façade. In the peak of the projecting wing are stylized cornice returns and a curvilinear bargeboard. A wrap-around porch with Doric columns and a rounded corner on the north side is enclosed with a wood balustrade with square wood balusters; a bay window is located under the porch on the south end of the facade. Windows are flat-topped, with some decorative window units with geometric upper sash and some 16/1 replacement sash.	ca. 1920	Contributing Building
Garage This is a gable-fronted garage of wood finished in weatherboard, with double-leaf garage doors sheltered by a pent roof.	ca. 1920	Contributing Building
House 501 S. Fifth Street The property is a substantial 1½-story Queen Anne-style house of wood construction finished in weatherboard and square-butt wood shingles, with a side-gable roof and an oversized front gable centered on the façade, penetrated by a grouping of three windows. The house has a 3-bay façade with bay windows on the first story and a centered entrance enframed with art glass sidelights. A substantial wrap-around porch supported by Doric columns rests on paneled wood bases, with a turned balustrade and eaves trimmed with modest modillions. A pediment is located over main entrance, above which is a balcony with a turned and paneled balustrade.	ca. 1915	Contributing Building
Garage Front-gable wood frame one-story garage finished in German siding and weatherboard, with two auto bays; exposed rafter tails under the eaves.	ca. 1920	Contributing Building
House 502 S. Fifth Street This property is a 1½-story Period Cottage of wood with an asymmetrical front-gable façade within which is the main entrance, featuring a single door with a segmental-arched fanlight, shielded by a front-gabled porch with segmental-arched intrados; the porch is supported by attenuated Doric columns. The house has a metal-shingled roof, an interior brick chimney, a shed dormer, and a gabled wing on the south elevation. Windows are flat-topped throughout, with 1/1 replacement sash and some windows are trimmed with louvered fixed shutters.	ca. 1910	Contributing Building
Garage Front-gabled garage of wood construction, finished in German siding, with an open auto bay.	ca. 1930	Contributing Building
House 504 S. Fifth Street The property is a 1-story Queen Anne-style house with weatherboard siding, a hipped roof with a wide frieze board, and a forward-projecting gable-end bay on the south side of the façade, with a Palladian window in the gable end and chamfered corners with stylized sawn brackets under the eaves. Cornice returns are on the gable ends, a rear gabled wing is present, and corbelled brick chimneys penetrate the roof. In the angle of the L-shaped façade is a shed-roofed	ca. 1910	Contributing Building

Old South Mebane Historic District
Name of Property

Alamance County, NC
County and State

porch supported by Doric columns. The main entrance is accessed from this porch and incorporates a single door with sidelights. Other than the Palladian window, all windows are flat-topped, 1/1, with some replacement sash units.

House **ca. 1956** **Contributing Building**
505 S. Fifth Street

The property is a 1-story red brick-finished Ranch house located on a corner lot, with a projecting front-gable roof on the façade. The main door features a stylized fluted surround and a screened-in porch is on the south elevation. Windows are 1/1 sash, with some fixed exterior shutters and a three-part window is located on the south side of the façade. Vinyl siding has been installed in the gable ends.

Garage **ca. 1956** **Contributing Building**
Front-gable garage behind the house, accessed from East McKinley Street.

House **ca. 1904** **Contributing Building**
506 S. Fifth Street

This is a 1-story Queen Anne-style house of frame, finished in weatherboard, with a hipped roof, a wide frieze board, and a forward-projecting gable-end wing on the south side of the façade, creating an L-shaped footprint. A diamond-shaped louvered vent is in the end of the gabled wing. In the angle of the ell on the north side of the façade is a 1-story shed-roofed porch supported by Doric columns. Two corbelled painted brick chimneys penetrate the roofline and a 1-story shed-roofed addition has been built onto the south elevation. The flat-topped windows have replacement 1/1 sash.

Shed **ca. 1980** **Non-Contributing Building**
A prefabricated modern wood shed is at the rear of the lot.

House **ca. 1952** **Non-Contributing Building**
507 S. Fifth Street

This is a 1-story residence of wood, located on a corner lot, finished in vinyl siding, with a side-gable roof, a gabled wing, 1/1 windows with fixed exterior shutters, and a screened-in gabled side porch. A three-part window is on the façade, beside an offset entry accessed by a stoop. The vinyl siding is installed vertically, a significant and incompatible visual alteration, with a loss of integrity.

House **ca. 1920** **Contributing Building**
508 S. Fifth Street

This is a substantial 1½-story Craftsman-style side-gable bungalow of wood, finished in vinyl siding, with a 3-bay façade and a distinctive entry featuring a main door enframed within Craftsman-style multi-light transom and sidelights. An engaged front porch supported by Doric columns extends across the façade, enclosed by a wood balustrade with square wood balusters. A shingle-finished shed dormer is on the façade with exposed rafter tails and knee braces; the knee braces are repeated on the eaves of the main house as well. The windows incorporate multi-light sash, 15/1 and 25/1. A concrete patio has been built onto the south elevation. An exterior gable-end brick chimney is on the north elevation and an interior brick chimney is on the rear.

Garage **ca. 1970** **Non-Contributing Building**
Front-gable garage finished in vinyl siding, with knee brackets and an overhead garage door; appears to date from after the Period of Significance.

House **ca. 1935** **Non-Contributing Building**
510 S. Fifth Street

This is a 1-story side-gabled Period Cottage of wood finished in vinyl siding, with a multiple roof system with a rear wing that peaks over the original main roof, significantly altering the character of the house; other additions likely include the main entry and the alteration which changes the north end to a hipped roof. A centered entry is set within a forward-projecting gabled entry bay and features a round-arched multi-light entry door. Windows are flat-topped with 6/6 replacement sash. Offset on the façade is a front-gabled bay at the north end of the façade. A large brick chimney is located on the façade.

Garage **ca. 1950** **Contributing Building**
Gable-front garage of wood with overhead door, located south of the main house and accessed from E. Roosevelt Street.

House **ca. 1955** **Contributing Building**
511 S. Fifth Street

This is a 1-story red brick-finished Ranch house, with a wide intersecting front gable roof. Between the main

Old South Mebane Historic District
Name of Property

Alamance County, NC
County and State

house and a gabled side wing is a substantial red brick chimney. The house incorporates horizontally-oriented 1/1 sash, some exterior fixed shutters, and a large multiple window unit on façade; window sills are brick header courses. The main door, incorporating sidelights, is offset on the façade and is shielded by the roof of the front gable, which is supported by a decorative metal post. Vinyl has been installed in the gable ends and beneath the windows on portions of the façade

House **ca. 1938** **Contributing Building**
600 S. Fifth Street

This house is a 2-story 3-bay Colonial Revival-style house of wood construction, likely with a central-passage plan. It is finished in vinyl siding, with a centered entry with a stylized segmental-arched frontispiece. The main entry is accessed by a brick stoop. The windows consist of 6/6 replacement sash. Three matching gable wall dormers are on the façade and a 1-story flat-roofed side wing with a roof balustrade is on the north elevation. An exterior gable-end brick chimney is on the south elevation and an interior brick chimney is on the rear.

House **1961** **Contributing Building**
601 S. Fifth Street

This is a 1-story Ranch house finished in red brick, with a side-gable roof and a recessed entry on the façade, accessed from a small masonry stoop. The windows employ 6/6 sash, some with exterior fixed shutters and some with paneled wood aprons beneath the windows.

House **ca. 1950** **Contributing Building**
602 S. Fifth Street

This house is a 1½-story Colonial Revival-style residence of wood, clad in vinyl siding, with a forward-projecting gable-end wing on the south side of the façade, whose end is finished in board-and-batten with a three-part window. A shed dormer is present on the rear elevation. On the façade is an open tile-finished patio that leads to the principal entrance which is enframed within sidelights. A flat-roofed wing and an exterior brick chimney are on the south elevation and a gable-roofed garage with a rooftop cupola is appended to the northwest corner.

Shed **ca. 1970** **Non-Contributing Building**

Gambrel-roofed prefabricated shed of wood construction behind the house.

Shed **ca. 1970** **Non-Contributing Building**

Modest front-gable shed of wood construction behind the house.

House **1950** **Contributing Building**
603 S. Fifth Street

This is a 1-story Ranch-style house oriented with its short gable end toward the street, on a heavily landscaped 1.5-acre lot. The house has a side-gabled roof, with slightly shorter side-gabled wings including an asymmetrical gable-roofed wing that projects from the northeast corner of the main block. A red brick chimney penetrates the roofline. Windows are flat-topped, with modest surrounds and what appear to be replacement sash.

Storage Building **ca. 1950** **Contributing Building**

A substantial side-gable-roofed storage building with a metal roof building stands east of the main house.

House **ca. 1999** **Non-Contributing Building**
604 S. Fifth Street

This is a 1-story hip-roofed house finished in red brick, with multiple front gable wings on the façade. The house employs flat-topped and segmental-arched windows, some 9/9, with one three-part window unit on the façade with flanking 6/6 sash and a segmental-arched transom over the central window. The entry to the integral garage with a single overhead door is on the south elevation.

House **ca. 1939** **Contributing Building**
606 S. Fifth Street

This is a 1-story Tudor Revival-style house finished in polychrome red brick, with a façade chimney and a side-gable roof with flared eaves and forward projecting gable-end bays on the façade, including a "cat-slide" gabled projection on the south side of the façade and a small gable over the main door, which is accessed by a stoop beside which is a patio onto which open French doors. A dormer is on the façade with diamond-paned windows. The windows are set on brick sills and are capped with soldier-course brick lintels; some windows are casement, with diamond-paned lights, and others are 6/6 replacement units. A large ell is on west elevation and incorporates a carport.

Garage **ca. 1939** **Contributing Building**

Brick garage with pyramidal roof, built with brick to match the house; non-historic overhead garage door.

Old South Mebane Historic District
Name of Property

Alamance County, NC
County and State

Shed Front-gable shed with a metal roof is behind garage.	ca. 1950	Contributing Building
House 607 S. Fifth Street This is a 2-story Colonial Revival-style residence finished in painted brick, with a main 3-bay block flanked by gable-roofed one-story side wings finished in brick and beaded weatherboard; one of these incorporates a hyphen connecting to a front-gabled brick wing with an interior chimney. An exterior gable-end brick chimney is present. The main entrance is centered on the façade with a transom and a pedimented frontispiece. Windows are 12/12 sash on the first story and 8/8 on the second story, with exterior shutters. An open gabled porch is on the north elevation.	ca. 1950	Contributing Building
Apartment An L-shaped brick apartment, accessed by a covered walkway from the main house.	ca. 1950	Contributing Building
Barn Substantial side-gable barn with a metal roof behind the house.	ca. 1980	Non-Contributing Building
House 608 S. Fifth Street This house is a 1½-story transitional Queen Anne/Colonial Revival-style house of wood frame, finished in weatherboard, with a hipped roof, two interior chimneys, a substantial gabled dormer on the façade, and a forward-projecting gable-end wing on the north side of the façade, with cornice returns and small paired windows. A wrap-around porch, partially enclosed, supported by single and paired Doric columns, extends across a portion of the façade and the south elevation. Windows incorporate three-part multi-light/1 sash, along with some exterior shutters. A side-gable wing is on the south elevation. The house has two interior chimneys.	ca. 1916	Contributing Building
Vacant Lot		
House 612 S. Fifth Street This is a 1½-story modern residence with a hipped roof, a gable dormer on the façade, a hipped dormer on the south elevation, and forward-projecting gable-end wings on the façade. The dormers are vinyl-clad. A variety of window forms are employed, including round-arched windows, fanlights, and 6/6 and 9/9 sash. The main entry has a transom and sidelights beneath a shed-roofed porch with turned wood posts.	ca. 2001	Non-Contributing Building
Garage Gable-roofed garage of wood, located behind the house.	ca. 2001	Non-Contributing Building
House 618 S. Fifth Street This 2-story Colonial Revival-style house is of wood construction, finished in vinyl siding, with a 5-bay symmetrical façade and a centered paneled entry door with sidelights, shielded by a one-bay portico with semi-elliptical intrados and supported by simple columns. It likely has a central-passage interior plan. There are 1-story gabled wings on the side elevations, the southernmost of which appears to be an enclosed porch. The windows are 6/6, with replacement sash and exterior fixed shutters. A 2-story hip-roofed ell is on the rear. There are two interior gable-end brick chimneys and one interior brick chimney on the rear ell.	ca. 1925	Contributing Building
Garage A frame telescoping front-gable garage/storage dependency which appears to have been built in three sections, each with a different height.	ca. 1950	Contributing Building
<u>South First Street</u>		
House 105 S. First Street This is a 1-story vernacular side-gable house of wood construction, finished in the original weatherboard, with a 3-bay façade, a centered entrance, and a shed-roofed front porch supported by square posts. Windows incorporate 4/4 sash and a rearward-projecting ell extends to the east.	ca. 1930	Contributing Building
Garage Front gable building with an open carport bay to the north and an enclosed bay to the south, with a vertical board door;	ca. 1930	Contributing Building

Old South Mebane Historic District
Name of Property

Alamance County, NC
County and State

the building is finished in German siding.

Office

205 S. First Street **ca. 1930** **Contributing Building**
This is a vernacular single-story front-gable building of wood, with a three-bay façade and a centered entry. Windows are flat-topped, without notable trim detail. Its appearance suggests that it may have served as a small office.

House **ca. 1918** **Non-Contributing Building**
306 S. First Street
This is a 1-story vernacular side-gable house finished in red brick which likely represents a later veneer and marks a significant change in character for the property. The 3-bay façade incorporates a modest shed-roofed front porch of brick with plain wood support posts set in pairs. A red brick chimney rises along the west slope of the roof. The windows are flat-topped, 4/4.

House **ca. 1932** **Contributing Building**
400 S. First Street
This substantial 1½-story Craftsman-style gable-front house is of wood, finished in weatherboard siding. It is located on a corner lot and incorporates a hip-roofed wrap-around porch, supported by slightly battered wood posts and enclosed within the original wood balustrade with square balusters. Gable dormers are on the side elevations and the windows are flat-topped, 4/1 sash, suggestive of the Craftsman style, with modest surrounds. The house has a hip-roofed rear wing.

Garage **ca. 1920** **Contributing Building**
Behind the house is a front-gabled wood garage, finished in weatherboard siding, with a single garage door opening.

House **ca. 1930** **Contributing Building**
404 S. First Street
This 1-story side-gable Craftsman-style bungalow of wood construction, finished in vinyl siding, with a gable dormer centered on the 3-bay façade. An engaged front porch extends across the façade, with capped wood posts and a replacement wood balustrade. Windows are flat-topped with 6/6 replacement sash and exterior fixed shutters. A gabled ell is on the west elevation.

Shed **ca. 1930** **Contributing Building**
A single-story building of wood construction, with a front-gable roof.

House **ca. 1942** **Contributing Building**
406 S. First Street
This single-story gable-front house exhibits a 3-bay façade and a centered entrance, shielded by a gable-front porch supported by decorative metal replacement posts and enclosed within a metal railing. Windows are flat-topped with what may be replacement sash, and a red brick chimney rises along the north slope of the roof.

Shed **ca. 1940** **Contributing Building**
A single-story side-gable-roofed building, finished in weatherboard, with a low side-gabled addition on its south elevation and shed-roofed hoods over its entries.

House **ca. 1940** **Contributing Building**
408 S. First Street
This single-story vernacular hip-roofed house is finished in vinyl siding and exhibits a recessed front porch on the northeast corner supported by a square post sheathed in siding. Flat-topped windows retain original 6/6 sash, with exterior fixed shutters and a red brick chimney penetrates the front slope of the roof.

Carport **ca. 2000** **Non-Contributing Structure**
Beside the house is a modern modular open-sided gabled carport.

South Fourth Street

Mebane Methodist Church **1948; 1959** **Contributing Building**
200 S. Fourth Street
This is a Colonial Revival-style church finished in red brick with a gable-front main wing and a perpendicular hip-roofed rear wing connected to a front-gabled projecting wing, creating a U-shaped footprint. The façade is dominated by a full Doric portico and a 2-stage tower with a hexagonal louvered belfry and a steeple. The main entrance is centered on the

Old South Mebane Historic District
Name of Property

Alamance County, NC
County and State

façade, with a swan's neck broken-pediment frontispiece and a double-leaf door. Religious art glass is on the façade. Round-arched windows are on the sanctuary section, with stone springers. Window sills are molded stone. Cornerstones suggest that the congregation dates from 1902 and the main church from 1948; the annex bears a 1959 date.

Pavilion ca. 1970 **Non-Contributing Building**

An elongated screened-in gabled pavilion stands behind the church, presumably for outdoor meeting and dining. It incorporates some weatherboard siding and sliding windows.

Carport ca. 2000 **Non-Contributing Structure**

A prefabricated metal carport is accessed from a paved parking lot south of the church.

House ca. 1940 **Contributing Building**
203 S. Fourth Street

This resource is a modestly-detailed 1-story Minimal Traditional-style house of wood construction, clad in vinyl siding, with a side-gable roof and an asymmetrical façade which includes a wing on the south which is somewhat shorter than the main block. A step-shouldered exterior brick chimney is offset on the façade, as is the principal entrance to the house, which is accessed from a small brick porch. A second red brick chimney is on the rear. The entry is shielded by a front-gabled porch which is supported by Doric columns. Windows are flat-topped with 1/1 replacement sash.

House ca. 1918 **Contributing Building**
204-206-208 S. Fourth Street

This is a substantial 2-story Colonial Revival-style residence of wood, finished in vinyl siding, converted for triple occupancy, with a side-gable roof, a 3-bay façade on the main house, and a 2-story hip-roofed rear ell. The centered entry is accessed by a flat-roofed enclosed forward-projecting entry bay with sidelights and a roof balustrade of cast metal. Flanking 2-story side-gable-roofed sections are on the north and south gable ends; the south wing has an enclosed porch on its first story and an entry off the patio that connects to the main entry bay. A band of small modillions and denticulation are along the eaves. The house employs flat-topped windows with 6/6 replacement sash and fixed exterior shutters. Several interior painted brick chimneys are present as well.

Shed ca. 1940 **Contributing Building**

A 1-story front-gable dependency, finished in vinyl siding, with French doors on the façade and flat-topped 6/6 windows.

Methodist Parsonage ca. 1955 **Contributing Building**
205 S. Fourth Street

This resource is a 2-story house, likely with a central-passage interior plan, in the Colonial Revival-style. Finished in red brick, the house has a side-gable roof, a 3-bay symmetrically-massed façade, and includes an exterior brick chimney on the south elevation and on the northeast corner. A 1-story gabled wing is on the north elevation. The house has a centered entry with sidelights shielded by a front-gabled portico with segmental-arched intrados, supported by plain wood posts. Windows are flat-topped with replacement 8/8 and 6/6 sash, set on brick sills and capped with soldier-course brick lintels. A front-gable red brick garage is attached by a hyphen on the north elevation and a flat-roofed screened-in side porch is on the south elevation. The building serves as the parsonage for the local Methodist congregation.

House ca. 1900 **Contributing Building**
207 S. Fourth Street

This is a 2-story I-house of wood, with a parged foundation, a three-bay façade, and a centered entry. The house has a side-gable roof with a center gable on the façade with a 6-light window in the gable end. The gable ends are trimmed with sawn bargeboard. A shed-roofed front porch extends across the façade, with turned porch supports and a gable over the entry. The house has flat-topped windows with multi-light replacement sash, some of which have exterior shutters. A single-story "T" extension is at rear and there is an interior brick chimney.

Shed ca. 1950 **Non-Contributing Building**

Front-gable shed, with flanking shed-roofed wings, with a modern door and window on the north end and a paneled door on the main section. The building is finished in non-historic vinyl siding and plywood.

House ca. 1920 **Contributing Building**
211 S. Fourth Street

This is a single-story Queen Anne-style house of wood construction, clad in vinyl siding, with a hipped roof, turned posts, and gabled projections on the façade and side elevation. A wrap-around hip-roofed porch extends along a portion of the façade and south elevation. Windows are flat-topped with replacement 2/2 horizontal sash and 3-part façade sash with fixed and 1/1 units. Also present is a gabled rear ell.

Old South Mebane Historic District
Name of Property

Alamance County, NC
County and State

- | | | |
|---|-----------------|-----------------------------------|
| Carport
Non-historic front-gable wood carport with a partial enclosure at the rear. | ca. 1990 | Non-Contributing Structure |
| House
300 S. Fourth Street
This resource is a 1-story vernacular house of wood construction, located on a corner lot, clad in vinyl siding, with a parged foundation, a side-gable roof, a small shed dormer on the façade, a gabled rear ell with a shed dormer, and early additions on the rear. The 3-bay façade features a centered entry and a hip-roofed front porch with a metal roof, supported by plain replacement wood posts. Windows are flat-topped, 1/1 sash. | ca. 1928 | Contributing Building |
| House
301 S. Fourth Street
This property is a single-story brick-finished Queen Anne-style house with a hipped roof and a porch which extends across a portion of the façade and wraps around a portion of the south elevation. The porch is trimmed with replacement sawn work. Windows are flat-topped 1/1 sash, with exterior fixed shutters. The house has front, side, and rear projecting gabled wings and an interior brick chimney. Additions to the rear include an attached gabled carport and the house appears to have a later brick veneer, with a loss of integrity. | ca. 1910 | Non-Contributing Building |
| In-ground pool
In-ground pool with surrounding wood balustrade. | ca. 1990 | Non-Contributing Structure |
| House
302 S. Fourth Street
This resource consists of a 1-story Craftsman-style hip-roofed house of wood, clad in vinyl siding, with a hip-roofed front porch and a hipped dormer centered on the façade. Exposed rafter tails are beneath the eaves and the windows are flat-topped with 4/1 sash and vinyl fixed exterior shutters. An interior painted brick chimney penetrates the slope of the roof. A stone chimney and brick flue are on the north elevation. | ca. 1920 | Contributing Building |
| Garage
Front-gable garage of wood with double-leaf doors, finished in weatherboard, with a shed-roofed bay to the north. | ca. 1920 | Contributing Building |
| Carport
Open-sided front-gable carport of wood construction, with lattice decoration. | ca. 1970 | Non-Contributing Structure |
| Shed
Prefabricated side-gabled shed of wood construction with 1/1 sash and a central door. | ca. 1970 | Non-Contributing Building |
| House
306 S. Fourth Street
This property is a 1-story non-historic side-gable-roofed residence with an engaged front porch with square posts and a wood balustrade, appearing to be of modular construction and built on a concrete block foundation with 1/1 sash windows and a central entry. | ca. 1980 | Non-Contributing Building |
| House
401 S. Fourth Street
This is a 1-story, side-gable-roofed house, built of wood and finished in weatherboard, with an intersecting front gable roof, a rear gabled ell, and a wrap-around porch on the north and west elevations. The porch is supported by attenuated turned posts, trimmed with sawn brackets, and enclosed within a wood balustrade with square balusters. Windows are flat-topped with 2/2 sash and non-historic fixed shutters. Two painted brick chimneys penetrate the roofline. The property is adjacent to the Presbyterian Church parking lot and is owned by the church. It appears deteriorated although it is among the least altered properties in the neighborhood. | ca. 1919 | Contributing Building |
| Parking Lot | | |
| House
402 S. Fourth Street
This resource consists of a 1-story Minimal Traditional-style house of wood finished in aluminum siding, with a side-gable roof and an asymmetrical 3-bay façade with what appears to be an enclosed gabled porch/sunroom on the north gable end. Windows are flat-topped windows, with replacement 1/1 sash units and fixed exterior shutters. A 1-story slightly projecting gabled wing on the south elevation is somewhat shorter than the main block. The entry stoop is sheltered by a metal awning. | ca. 1950 | Contributing Building |

Old South Mebane Historic District
Name of Property

Alamance County, NC
County and State

- | | | |
|---|-----------------|-----------------------------------|
| Shed
Single-story shed-roof shed of wood construction, modest in its form and finishes, with vertical wood board siding. | ca. 1950 | Contributing Building |
| Carport
An open-sided carport, supported by metal poles and capped with a shed-roofed metal roof, is behind the main house and appears to be less than fifty years of age. | ca. 1970 | Non-Contributing Structure |
| Duplex
404-406 S. Fourth Street
This is a 1½-story Minimal Traditional-style duplex of wood construction, finished in asbestos shingle siding, with a front-gable roof with a 1/1 window in the gable end. The façade is massed in mirror image, with each unit having a single entry door with three vertical panes over horizontal panels, accessed from a brick stoop and shielded by a front-gabled hood supported by paired knee brackets. There is an interior brick chimney. Windows are flat-topped 1/1sash, with replacement sash and a modern deck is present on the side elevation. | ca. 1947 | Contributing Building |
| House
408 S. Fourth Street
This resource is a 1½-story 3-bay Craftsman-style house of wood construction, finished in weatherboard, with a hipped roof, hipped dormers, and exposed rafter tails beneath the eaves of the house and the dormers. An engaged front porch extends across the façade, supported by battered wood posts resting on painted brick piers, shielding an off-center entry. Flat-topped Craftsman-style windows, 3/1 and 4/1 sash, are generally maintained. Red brick chimneys penetrate the roof. | ca. 1920 | Contributing Building |
| Dependency
A 1-story gable-roofed dependency finished in weatherboard. | ca. 1920 | Contributing Building |
| Shed
A 1-story non-historic gabled shed of wood construction clad in plywood sheeting. | ca. 2000 | Contributing Building |
| House
410 S. Fourth Street
This is a 1½-story Craftsman-style house of wood construction, with a hipped roof and hipped dormers, as well as early side and rear additions. An engaged front porch supported by battered wood posts resting on painted brick piers extends across the façade, enclosed with a wood balustrade with square balusters. The original Craftsman-style front door is present, with lower panels and 4-light upper section. Flat-topped Craftsman-style windows have been retained, 3/1 sash. Two exterior brick chimneys and a stainless steel furnace pipe are on the north elevation. | ca. 1910 | Contributing Building |
| Carport
An open-sided carport supported by wood posts, with a nearly flat roof, stands beside the main house and appears to be less than fifty years of age. | ca. 1970 | Non-Contributing Structure |
| Shed
A modestly-scaled minimally-finished shed of wood construction, with a hipped roof, stands behind the main house. | ca. 1920 | Contributing Building |
| Vacant lot | | |
| House
414 S. Fourth Street
This property is a 2-story Craftsman-style American Foursquare of wood construction, finished in weatherboard on the first story and shingles on the second story and on the dormer, with an early 1-story sunroom addition on the south elevation, flat-roofed, with a roof balustrade of wood. The main house is hip-roofed with flared eaves, with a hipped dormer on the façade, also with flared eaves and the original 6/1 sash. Curved rafter tails are beneath the eaves. A 1-story addition or enclosed porch is on the rear along with a modern wood deck. The main entrance is offset on the north side of the façade, shielded by a 1-bay hip-roofed front porch supported by wood posts resting on brick piers. The house has flat-topped windows, with 6/6 replacement sash and a tall painted brick exterior chimney is on the south elevation. | ca. 1920 | Contributing Building |
| Garage
A front-gable wood frame weatherboard sheathed garage with a double-leaf door is behind the main house to the northwest. | ca. 1920 | Contributing Building |
| House
416 S. Fourth Street
This property is a 1-story Minimal Traditional-style residence of wood, finished in vinyl siding, with a low-pitched side-gable roof, interior and exterior brick chimneys, and a forward-projecting gabled wing on the south end of the facade. | ca. 1948 | Contributing Building |

Old South Mebane Historic District
Name of Property

Alamance County, NC
County and State

Windows are flat-topped with replacement 1/1 sash. A hip-roofed garage is linked to the main house by a breezeway on the north gable end.

House **ca. 1948** **Contributing Building**
417 S. Fourth Street

This resource is a 1½-story Cape Cod-style house of wood, finished in aluminum siding, with a 3-bay façade and paired gable dormers on the façade and an offset shed dormer on the rear. A brick chimney is offset and penetrates the ridge line. The main entry is centered on the façade and is accessed by a small brick porch shielded by a metal awning supported by decorative metal posts. Windows are original, 6/6 and 8/8, with what appear to be exterior fixed shutters postdating the original date of construction; metal awnings are on the façade windows of the main block and a small one-story gabled wing is on the north gable end.

Carport **ca. 1970** **Non-Contributing Structure**
A partially-open-sided carport with a nearly flat roof and cast metal supports, stands beside the house at the end of the driveway.

House **ca. 1914** **Contributing Building**
501 S. Fourth Street

This is a single-story gable-and-wing vernacular house with a small shed-roofed porch in the angle of the L-shaped façade, supported by replacement turned posts and enclosed within a non-historic wood balustrade with square balusters. Above the porch is an offset gable. There is an interior brick chimney and cornice returns on the gable ends. Windows are flat-topped with 2/2 sash. There is a slightly-projecting gabled wing on the north side and a gabled rear ell with an enclosed shed-roofed porch.

Garage **ca. 1920** **Contributing Building**
This is a side-gable-roofed garage with folding doors, finished in weatherboard, with exposed rafters and several additions to the rear.

Ben Gibson House **ca. 1925** **Contributing Building**
502 S. Fourth Street

This resource is a gable-front residence of wood construction, finished in vinyl siding, and somewhat reminiscent of the American Foursquare house type, with an interior brick chimney and knee bracing under the eaves (clad in vinyl). A shed-roofed screened-in front porch is present, with a substantial offset gable over the main door on the south side of the façade. The house has flat-topped windows, with 1/1 replacement sash. According to the owner, this was the home of Ben Gibson, a local carpenter, who likely built it for himself.

House **ca. 1924** **Contributing Building**
504 S. Fourth Street

This is a 1-story gable-front vernacular house of wood construction, clad in vinyl siding, with an interior brick chimney and a hip-roofed front porch supported by battered wood posts which rest on brick piers; the porch is enclosed with a wood balustrade with square balusters. The 3-bay façade has a centered entry and it appears that a gable-roofed addition, slightly shorter than the original house, has been built onto the rear elevation. Windows are flat-topped replacement multi-light sash.

Garage **ca. 1930** **Contributing Building**
Front-gable garage finished in vertical boards with an open bay and double-leaf doors and a shed-roofed bay on the north.

Carport **ca. 1990** **Non-Contributing Structure**
Prefabricated open-sided gabled metal carport.

House **ca. 1950** **Contributing Building**
505 S. Fourth Street

This is a Cape Cod-style house of wood construction, clad in vinyl siding, 1½ stories in height, with a side-gable roof and a slightly shorter side-gable-roofed sunroom wing on the side elevation. An interior gable-end red brick chimney is between the main wing and the sunroom. Windows are flat, with multi-light replacement sash, including a large fixed window on the façade, along with a slightly projecting window with a shed-roofed hood. Paired gable dormers are on the façade and the main entrance is offset on the façade, with a solid paneled door accessed from a small porch with a front-gable roof.

Garage **ca. 1950** **Contributing Building**
Gable-front garage of wood construction, finished in asbestos shingle siding, set on a concrete block foundation, with a

Old South Mebane Historic District
Name of Property

Alamance County, NC
County and State

single overhead garage door and 6/6 sash.

House **ca. 1924** **Contributing Building**
506 S. Fourth Street

This is a 1½-story Craftsman-style side-gable-roofed bungalow of wood, retaining the original weatherboard siding, with a shed-roofed front porch and a gabled dormer on the façade. The porch is supported by plain wood posts resting on brick piers. Knee bracing and exposed rafter ends are under the eaves of the main house and the dormer. A rear gabled ell is present and a rectangular bay extends from the north gable end. An interior brick chimney is present along with a step-shouldered red brick chimney on the gable end. Windows are flat-topped with 6/1 replacement sash, with units set singly and in pairs.

West Holt Street

House **ca. 1951** **Contributing Building**
116 W. Holt Street

This is a 1-story Colonial Revival-style house of wood, finished in aluminum siding, with a 2-bay main section and side wings of an additional 3 bays. The main entrance is offset in the west end of the main wing, and has a classically-derived frontispiece with fluted pilasters and triglyphs in the entablature, a door with curvilinear-topped panes, and a stoop with a decorative metal balustrade. The house has a side-gable roof, an interior chimney, and flat-topped windows with 6/6 and 4/4 sash, and exterior fixed shutters. Window units are set singly and in groups, including a 3-part window unit on the façade.

Garage **ca. 1951** **Contributing Building**
East of the house is a front-gabled garage with an open-bay shed-roofed addition to the west.

Vacant Lot

House **ca. 1910** **Contributing Building**
205 W. Holt Street

This is a 1-story residence of wood, finished in vinyl siding, with a side-gable roof and a centered entry on the 3-bay façade. Shielding the main entry is by a gable-front porch supported by Doric columns. Windows are flat-topped 2/2, with original wood sash and exterior fixed shutters. Two rear gabled ells are present as are interior chimneys.

Garage **ca. 1920** **Contributing Building**
A 1-story front-gabled garage of wood construction with German siding and an open bay.

Shed **ca. 1950** **Contributing Building**
Gable-roofed shed of wood.

House **ca. 1913** **Contributing Building**
207 W. Holt Street

This resource consists of a 1-story gable-and-wing vernacular house of wood construction, finished in weatherboard, with a rear gabled ell, interior brick chimneys, and a wrap-around porch on the façade and side elevation supported by turned wood posts. Cornice returns are on the gable ends as are diamond-shaped louvered vents. Several additions are to the rear.

Garage **ca. 1920** **Contributing Building**
Beside the house is a 1-story front-gable wood garage finished in weatherboard with doors on original sliding rollers.

House **ca. 1912** **Contributing Building**
209 W. Holt Street

This is a substantial 2-story eclectic residence of wood, finished in vinyl siding, located on a corner lot, combining aspects of the Queen Anne and Colonial Revival styles. The house exhibits a gable and hipped roof, with the irregular form of Queen Anne-style along with multiple Palladian windows of the Colonial Revival style. A wrap-around porch, supported by Doric columns, has a gable over the main entrance, which is enframed within sidelights. Other than the Palladian windows, the windows are flat-topped, 1/1, set singly and in pairs. Additions include a 2-story cut-away bay at the west end of the façade. Interior brick chimneys are present.

Gazebo **ca. 1990** **Non-Contributing Building**
A non-historic gazebo of wood construction.

Old South Mebane Historic District
Name of Property

Alamance County, NC
County and State

- | | | |
|--|-----------------|-----------------------------------|
| In-ground pool
Masonry in-ground pool behind main house. | ca. 1990 | Non-Contributing Structure |
| House
300 W. Holt Street
This is a 2-story I-house of wood, with interior brick chimneys. The house is finished in vinyl siding and likely has a central-passage plan. It features a hipped roof and a center gable on the 3-bay façade which incorporates a centered entry, shielded by a hip-roofed porch supported by replacement decorative metal supports. The center gable has partial cornice returns. The house has a rear hip-roofed ell and flat-topped windows, with fixed exterior shutters and replacement 1/1 sash. An attached shed-roofed metal carport extends from a shed-roofed addition at the north end of the rear ell. | ca. 1910 | Contributing Building |
| Shed
Front-gabled shed at the end of a driveway with an open-sided shed addition on the west elevation. | ca. 1950 | Contributing Building |
| House
301 W. Holt Street
This resource is a substantial 2-story vernacular house of wood construction, located on a corner lot and finished in vinyl siding, with a side-gable roof and a slightly taller intersecting hip-roofed rear section. The house exhibits a 3-bay façade with centered entry, along with a gable dormer centered on the façade. The hip-roofed front porch is supported by decorative metal posts and is enclosed within a metal balustrade. There is a 1-story gabled rear wing and windows are flat-topped 2/2, with window units set singly and in pairs. | ca. 1910 | Contributing Building |
| Dependency
A low front-gabled frame outbuilding of wood construction is located at the rear of the lot, finished in vertical wood siding. | ca. 1920 | Contributing Building |
| House
305 W. Holt Street
This is a 2-story hip-roofed vernacular residence of wood construction, finished in aluminum siding, with a gable-front projecting wing on the west side of the façade, creating an L-shaped footprint. A hip-roofed wrap-around porch is on the façade and on a portion of the west elevation, supported by plain wood posts and enclosed within what appears to be a replacement wood balustrade with attenuated turned balusters. A gabled wing projects from the east elevation. The building has a tall interior chimney and windows are flat-topped with replacement 1/1 sash and exterior fixed shutters. Rear additions include a 1-story gabled ell on the west end of the rear elevation. | ca. 1910 | Contributing Building |
| Shed
A side-gabled shed is behind the main house, finished in shiplap siding with double-leaf doors on the façade. | ca. 1950 | Contributing Building |
| House
306 W. Holt Street
This is a 1-story gable-and-wing vernacular house of wood, finished in vinyl siding, with an L-shaped façade and a hip-roofed porch in the angle of the ell. The gable ends feature diamond vents and partial returns of the cornice. An interior brick chimney is also present. The porch is supported by replacement turned posts and enclosed with a replacement wood balustrade with square balustrades; it shelters a glazed-over-panel door. A shed-roofed addition is on the east elevation along with a rear gabled ell and other rear additions. Windows are flat-topped with replacement sash and some exterior fixed shutters. | ca. 1920 | Contributing Building |
| Shed
Front-gable shed in heavy overgrowth at the rear of the lot. | ca. 1920 | Contributing Building |
| House
307 W. Holt Street
This resource consists of a distinctive 1-story Queen Anne-style house with a wide frieze board, 1/1 sash, tall corbelled interior brick chimneys, and a Colonial Revival-style Palladian window in the gable end of the forward-projecting gable-front wing on the façade. This wing has chamfered corners with sawn brackets under the eaves. The façade is L-shaped with a wrap-around porch supported by attenuated Doric columns. The main entrance has a glazed and paneled door and matching sidelights and an offset gable is on the east end of the front porch, with a round-arched 1/1 sash window in the gable. The house has a steeply-pitched main hipped roof. All roof sections are of standing-seam metal and a gabled dormer is on the rear. A gabled ell stands to the rear. | ca. 1910 | Contributing Building |
| Garage
Behind the house is a 2-story gable-front garage of wood construction, finished in weatherboard with a sliding door and | ca. 1910 | Contributing Building |

Old South Mebane Historic District
Name of Property

Alamance County, NC
County and State

a pedestrian door on the east end of the facade.

House **ca. 1920** **Contributing Building**
310 W. Holt Street
This resource consists of a 1½-story gable-front Craftsman-style bungalow of wood, finished in vinyl, with a recessed front porch, tapered and capped square porch posts, and knee bracing (vinyl-clad) under the eaves. The house exhibits a 3-bay façade with centered entrance, gable dormers on the east and west elevations, and 1-story additions on the rear. Windows are flat-topped with replacement 1/1 sash and exterior fixed shutters. This is similar to the house at 114 W. Jackson Street.

Dependency **ca. 2000** **Non-Contributing Building**
Side-gabled prefabricated wood outbuilding behind the main house that appears less than fifty years of age.

House **ca. 1910** **Contributing Building**
313 W. Holt Street
This is a 1-story vernacular house of wood construction, with a side-gable roof of pressed standing-seam metal and a broad shed-roofed porch extending across much of the façade, with replacement turned wood posts and a replacement wood balustrade with square balusters. A centered gable is on the façade, with cornice returns and a diamond-shaped vent in the gable end. The section to the west of the central gable is slightly-recessed and the house has flat-topped windows with replacement 1/1 sash and exterior fixed shutters. A red brick chimney with some corbelling is offset on the ridgeline of house and the property has a rear gabled ell and other gabled additions on the rear.

Shed **ca. 1920** **Contributing Building**
Small 1-story front-gable-roofed shed of wood construction, behind the house, with a lattice-enclosed shed-roofed addition and a single door.

Dependency **ca. 1920** **Contributing Building**
Side-gable-roofed dependency with a 5-panel double-leaf entry door and a hip-roofed front porch. Its design suggests that it might have been a child's playhouse.

House **ca. 1910** **Contributing Building**
314 W. Holt Street
This property is a 2-story gable-and-wing residence with an intersecting metal-sheathed gable roof and a wrap-around porch supported by turned posts and enclosed within a replacement wood balustrade with square balusters. A pointed-arched louvered vent is in the gable end on the façade. Cornice returns are on the gable ends and windows are flat-topped with replacement sash and some exterior fixed shutters. A corbelled central chimney of red brick and a rear gabled ell are present as well.

Shed **ca. 2000** **Non-Contributing Building**
An elongated front-gabled outbuilding wood construction, finished in T-111, with a double-leaf door on one elevation, is incorporated into a paved parking area. It is less than fifty years of age.

East Jackson Street

House **ca. 1929** **Contributing Building**
200 E. Jackson Street
This is a 2-story red brick-finished side-gable-roofed Tudor Revival-style house, with the slope of the roof on the façade penetrated by three gable dormers finished in half-timbering; the gables on the side elevations are similarly finished. A projecting gabled entry bay of brick is offset on the façade and retains the original round-arched wood door set within a round-arched opening above which is an elongated round-arched louvered vent. An exterior gable-end brick chimney is on the west gable end beyond which is a 1-story side-gable wing with French doors. Windows are multi light, including some casement windows.

Garage **ca. 1929** **Contributing Building**
This is a 1½-story front-gabled stuccoed garage with paired overhead garage doors and a small shed roof hood over the garage doors.

House **ca. 1920** **Contributing Building**
100 E. Jackson Street
This is a 1½-story Craftsman-style bungalow of wood construction with a side-gable roof, 3-part windows in the gable ends, exposed purlins under the eaves, and a gable dormer on the façade with 3 multi-light fixed windows. The building is

Old South Mebane Historic District
Name of Property

Alamance County, NC
County and State

finished in vinyl siding and has interior and exterior brick chimneys. An engaged front porch with curved spandrels is supported by brick posts and enclosed within a solid brick railing. The house has flat-topped windows, multi-light/1 sash, and single-story projecting bays are on the west elevation as well as a rear gabled ell.

House **ca. 1920** **Contributing Building**
101 E. Jackson Street

This resource is a 1-story vernacular house of wood, retaining the original weatherboard siding, with a side-gable roof of standing-seam metal, a central chimney, and centered gable on the façade. The 3-bay façade exhibits a centered entry. A rear gabled ell is present and windows are flat-topped windows, original wood 2/2 sash, with exterior fixed shutters. The main entrance is accessed from a concrete stoop and the building has a parged foundation.

House **ca. 1920** **Contributing Building**
102 E. Jackson Street

This is a 1-story house of wood construction, finished in weatherboard siding, with a side-gable roof, an interior brick chimney, and a gabled dormer within which is a stylized Palladian window and vents. The dormer and gable ends are finished in shingles. A wrap-around porch is supported by battered paneled wood posts resting on shaped brick piers and enclosed within an original wood balustrade with square wood balusters. Windows are asymmetrical and flat-topped 1/1 sash with some art glass in the upper sash. Additions are on the side and rear elevations, including a large rear gabled ell. An exterior chimney is present.

Shed **ca. 1980** **Non-Contributing Building**

A prefabricated front-gable wood shed is at the rear of the lot.

House **ca. 1955** **Contributing Building**
103 E. Jackson Street

This property is a 1-story Minimal Traditional-style residence of wood, finished in asbestos shingles, with a side-gable roof and an asymmetrical 3-bay façade with the main entrance offset on the west side of the façade, accessed by a brick stoop with a modern wood balustrade, and retaining the original entry door with two lower vertical panels and two smaller windows above. Windows are flat-topped with an oversized multi-light fixed window on the façade, along with 2/2 horizontal sash.

Shed **ca. 1990** **Non-Contributing Building**

A non-historic shed-roofed shed finished in plywood, with exposed rafter tails.

Shed **ca. 1955** **Contributing Building**

A modest shed of wood construction, finished in novelty siding.

House **ca. 1918** **Contributing Building**
104 E. Jackson Street

This resource is a 1-story Craftsman-style bungalow of wood construction with a side-gable roof, a gable-end-oriented rear ell, and a shed dormer on the façade punctuated by four 6/6 sash windows. The gable ends and dormer are shingled, as are the curved spandrels of the engaged front porch that wraps to the east elevation and is supported by paneled wood posts. The main entrance is centered on the façade, articulated by multi-light sidelights. The windows are flat-topped with multi-light sash. Exposed rafter tails and knee brackets are under the eaves, an exterior gable-end brick chimney is on the west gable end.

Garage **ca. 1930** **Contributing Building**

A front-gable garage of wood is behind the house.

Vacant Lot

House **ca. 1910** **Contributing Building**
105 E. Jackson Street

This resource is a 1-story vernacular house of wood, finished in vinyl siding, with a side-gable roof and a somewhat smaller gabled addition on the west side. The main house features a centered gable on the façade with an octagonal louvered vent in the gable end, beneath which is a shed-roofed porch which shields the main entrance. The front porch is supported by replacement decorative metal supports and is enclosed within a replacement wood balustrade with wood balusters. Windows are flat-topped with replacement sash, a 3-part window on the façade, and exterior fixed shutters. A central chimney with some brick corbelling rises along the ridgeline and a gabled rear ell is present.

Old South Mebane Historic District
Name of Property

Alamance County, NC
County and State

House **ca. 1920** **Contributing Building**
107 E. Jackson Street

This property is a 1½-story Craftsman-style side-gable bungalow of wood, finished in original weatherboard siding with shingled gable ends, with a substantial wood shingle-finished gable dormer which forms a balcony on the upper story. A shed-roofed front porch is supported by distinctive battered posts (short and stout on the outside corners) resting on paneled brick piers and enclosed within a solid brick railing. The balcony roof is supported by battered posts on shingled piers with a shingled solid balustrade. Both knee bracing and exposed rafter tails are under the eaves. A gabled ell and a gabled dormer are on the rear, and a 1-story shed-roofed bay projects from the west elevation. The windows are flat-topped 4/4, 8/8 and 6/6 sash with a three part window on the façade.

Garage **ca. 1920** **Contributing Building**
Behind the house is a 2-car hip-roofed garage with open garage doors.

West Jackson Street

House **ca. 1920** **Contributing Building**
105 W. Jackson Street

This property is a 1-story vernacular side-gable house with a 3-bay façade, finished in vinyl siding, with an interior brick chimney, a centered entrance shielded by a front-gabled porch, and a center gable with an octagonal vent over the entry door. It appears that early additions have been made onto the rear (south) elevation and a large modern addition extends beyond the west elevation. The house has flat-topped windows with 2/2 sash. A large paved parking lot and the Baptist Church are to the west.

House **ca. 1940** **Contributing Building**
112 W. Jackson Street

This is a 1-story Period Cottage of wood, finished in vinyl siding, with a side-gable roof and forward projecting bays on the façade, including a brick entry bay with a segmental-arched entry, accessed by a small masonry stoop. Windows are flat-topped windows, with multi-light replacement sash and exterior fixed shutters. A brick chimney rises on the rear slope of the roof where there is also a shed dormer. A side-gable wing on the east elevation is likely an enclosed porch.

Garage **ca. 1940** **Contributing Building**
At the rear of the lot is a front-gable garage of wood construction, finished in weatherboard, with an open side bay.

House **ca. 1910** **Contributing Building**
114 W. Jackson Street

This property is a 1½-story gable-front bungalow finished in weatherboard, with a centered entry and an engaged porch supported by tapered wood posts. Knee braces are under the eaves and a gable dormer is on the west elevation. Windows are flat-topped with original 4/1 and 2/2 sash, some with exterior fixed shutters. This is a similar house type to the property at 310 W. Holt Street.

House **ca. 1925** **Contributing Building**
116 W. Jackson Street

This is a 1-story hip-roofed Queen Anne-influenced house of wood, finished in vinyl siding, with an L-shaped façade created by a gable-end-oriented wing with a circular louvered vent in the gable end, and a porch in the angle of the ell. The porch is supported by replacement turned wood posts and trimmed with vinyl sawnwork brackets. Windows are flat-topped 1/1, with replacement sash, and a hipped hood is over a window on the front wing. Additions on the rear elevation include a gabled ell and other additions.

Shed **ca. 2000** **Non-Contributing Building**
Side-gabled prefabricated shed with double entry doors and 1/1 sash.

Shed **ca. 2000** **Non-Contributing Building**
Side-gabled prefabricated shed finished in T-111 siding, with 6/6 windows.

House **ca. 1920** **Contributing Building**
118 W. Jackson Street

This resource is a 1½-story Craftsman-style bungalow of wood, finished in vinyl siding, with a front-gable roof and gable dormers on the secondary elevations, along with small knee braces, clad in vinyl, under the eaves. Entrances are on both the W. Jackson and S. Third street elevations. Additions are on secondary elevations. A wrap-around porch is on two sides and windows are flat-topped with replacement sash. The porch has modern turned posts and balustrade and a

Old South Mebane Historic District
Name of Property

Alamance County, NC
County and State

brick chimney rises from the rear slope of the roof.

Shed ca. 1970 **Non-Contributing Building**

A prefabricated side-gable wood shed is behind the house.

House ca. 1910 **Contributing Building**

210 W. Jackson Street

This is a 1-story house of wood, finished in vinyl, with a front-gable roof, a 1/1 window in the gable end, and a wrap-around porch supported by wood posts with curvilinear intrados. The 3-bay façade exhibits a centered entrance. Windows are flat-topped 1/1, with exterior fixed shutters.

House ca. 1910 **Contributing Building**

212 W. Jackson Street

This is a substantial 2-story Colonial Revival-derived hip-roofed house of wood, likely with a central-passage plan, finished in vinyl shiplap siding, with a hip-roofed porch supported by plain wood posts and balustrade which shields the innermost portion of the 3-bay façade. Windows are flat-topped with exterior fixed shutters and 6/6 original sash. A brick chimney penetrates the rear slope of the roof.

House ca. 1986 **Non-Contributing Building**

214 W. Jackson Street

This resource is a 1-story seemingly modular house of wood finished in vinyl siding with a side-gable roof and a front-gable front porch supported by turned posts and enclosed within a balustrade. Windows are flat-topped 1/1 sash, with exterior fixed shutters.

House 1920 **Contributing Building**

301 W. Jackson Street

This is a 1½-story Craftsman-style bungalow finished in stone veneer, with a side-gable roof and a gable dormer, finished in asbestos shingles, is centered on the façade. Asbestos shingle finishes are in the gable ends as well. The stone veneer, while likely not original, appears to date from within the period of significance of the district. A wrap-around porch has a portion enclosed and is penetrated by operable 1/1 sash. Windows are flat-topped 6/1 with original sash. A Craftsman-style fixed window is located in the dormer. An interior gable-end chimney is on the east gable end and knee brackets are under the eaves of the main house and of the dormer. Additions are on the rear (south) elevation. An interior chimney also penetrates the roof and a rear gabled wing is present as is an attached concrete block addition with an attached carport.

House ca. 1947 **Contributing Building**

302 W. Jackson Street

This is a 1-story Minimal Traditional-style house of wood construction, finished in vinyl siding, with a side-gable roof and a slightly shorter side-gabled section on the west elevation. The main portion of the house is 3 bays in width with a centered entry and a brick stoop shielded by a modest gabled hood supported by knee brackets. Windows are flat-topped windows, with multi-light replacement sash set singly and in pairs, with exterior fixed shutters.

Shed ca. 1980 **Non-Contributing Building**

A 1-story gable-end shed of wood construction, finished in T-111, with a metal shed roof over the façade.

House ca. 1924 **Contributing Building**

303 W. Jackson Street

This property is a 1½-story Craftsman-derived bungalow of wood, finished in vinyl siding, with a front-gable roof and a wrap-around porch supported by battered wood posts resting on brick piers. A Craftsman-style door serves the main entry, gable dormers are on the side elevations, and additions are on the rear. Windows are flat-topped 1/1, with some exhibiting exterior fixed shutters. Three red brick chimneys penetrate the roof.

Garage ca. 1924 **Contributing Building**

At the rear of the lot is a front-gable wood garage, finished in weatherboard, with a shed addition and an open auto bay.

Carport ca. 2000 **Non-Contributing Structure**

At the rear of the lot is a non-historic modular gabled metal carport.

Old South Mebane Historic District
Name of Property

Alamance County, NC
County and State

House **ca. 1953** **Contributing Building**
304 W. Jackson Street

The property is a 1-story Minimal Traditional-style house finished in red brick with a side-gable roof, a brick façade chimney, and a 1-car garage linked by a hyphen on the west elevation. A modest porch extends across a portion of the façade, with what appear to be replacement wood posts and balustrade sheltering a deeply recessed entry bay with paneled side walls. On the east side of the façade is an offset gable. The house employs flat-topped original metal awning windows on the hyphen, and flat-topped 1/1 sash windows, including a 3-part window, all resting on header-course sills.

House **ca. 1913** **Contributing Building**
305 W. Jackson Street

This property is a 1-story Queen Anne-style house of wood, finished in vinyl siding, with a hipped roof and projecting side- and front-gabled wings with partial cornice returns and fixed 3/1 windows, along with a wrap-around porch supported by replacement decorative metal supports. Tall corbelled red brick chimneys penetrate the roof. The house employs flat-topped multi-light windows with some original 3/1 sash and some replacement units. Additions, including a gabled ell, are present on the rear (south) elevation.

Carport **ca. 1970** **Non-Contributing Structure**

Open-sided metal carport with a shed roof, less than fifty years of age.

Garage **ca. 1920** **Contributing Building**

A 1-story front-gabled garage of wood construction, finished in weatherboard, with a standing-seam metal roof and exposed rafter tails beneath the eaves.

House **ca. 1920** **Non-Contributing Building**
308 W. Jackson Street

This is a heavily-altered 1-story gable-and-wing house of wood construction with an L-shaped façade and shed-roofed porch in the angle of the ell, supported by replacement decorative metal support posts. The house is finished with aluminum siding. Windows are flat-topped with 6/6 sash, multi-light fixed windows on the façade, and exterior fixed shutters. What appears to be an early addition is in the angle of the ell at the rear of the house.

Garage **ca. 1953** **Contributing Building**

Beside the house is a front-gabled garage of concrete block, with aluminum siding in the gable ends, a metal roof, and an open auto bay.

House **ca. 1922** **Contributing Building**
309 W. Jackson Street

This property is a 1½-story Craftsman-style side-gable bungalow, finished in vinyl siding, with an exterior brick chimney and a wrap-around porch, partially screened-in, with curvilinear intrados, supported by battered wood posts resting on brick piers. Gable dormers are front and rear, and vinyl-clad knee bracing is under the eaves. Windows are flat-topped with 1/1 replacement sash, and a gabled rear ell is present.

Garage **ca. 1922** **Contributing Building**

At the rear of the lot is a front-gable garage, finished with weatherboard and vinyl siding, with shed-roofed side additions, all of wood construction. A double-leaf door provides entry.

Shed **ca. 1990** **Non-Contributing Building**

At the rear of the lot is a small side-gable shed of wood construction, likely prefabricated, with vinyl siding and an entry door flanked by windows.

House **ca. 1920** **Contributing Building**
401 W. Jackson Street

This property is a 1½-story vinyl-sided house with a side-gable roof of metal, with a shallow-pitched gable dormer which may represent an early addition. A shed-roofed front porch extends across most of the 3-bay façade, supported by replacement turned wood posts and incorporating a centered entry. A gable-end section is at the rear, a gabled dormer is on the east elevation, and a corbelled red brick chimney rises along the rear slope of the roof. Windows are flat-topped 1/1, with replacement sash.

Garage **ca. 1970** **Non-Contributing Building**

This is a front-gabled garage with an open auto bay that appears less than fifty years of age. Several additions are on the side elevation, including portions which are roofed with corrugated vinyl sheeting.

Old South Mebane Historic District
Name of Property

Alamance County, NC
County and State

East Lee Street

House **ca. 1947** **Contributing Building**
102 E. Lee Street

This is a 1-story Ranch house of wood, finished in vinyl siding, with a concrete block foundation and a shallow-pitched front gable roof. The house has an asymmetrical 4-bay façade and a replacement wood stoop with balustrade. Windows are flat-topped with replacement 6/6 sash and exterior fixed shutters. A furnace chimney rises along the rear slope of the roof.

Garage **ca. 1947** **Contributing Building**
Beside the house is a vinyl-finished gable-end garage with an open-ended 2-bay shed-roofed addition.

House **ca. 1910** **Contributing Building**
103 E. Lee Street

This is a 2-story front-gable residence of wood, finished in vinyl and featuring an interior chimney, a side-gable wing on the east elevation, with partial cornice returns on the gable ends. A wrap-around porch incorporates turned posts which are likely replacement elements, along with an added spindle frieze and sawn brackets. Windows are flat-topped 1/1 sash, including a band of four fixed windows on the second story of the west elevation. A rear 1-story gable ell is present.

Garage **ca. 1920** **Contributing Building**
Beside the house is a 2-story front-gable-roofed garage of wood, with an intersecting side-gable roof, and what appears to be a hipped-roof addition on the front to accommodate large vehicles. The garage is finished with vinyl siding and has 2/2 sash windows.

West Lee Street

House **ca. 1918** **Contributing Building**
103 W. Lee Street

This is a 2-story Queen Anne-style residence of wood, finished in weatherboard, with a hipped roof and projecting side-gabled wing with cornice returns and a partially-enclosed wrap-around porch supported by replacement turned wood posts. The house employs flat-topped windows, with replacement sash and modest original surrounds. A one-story T-shaped addition is on the west elevation. A prominent red brick chimney is present.

Garage **ca. 1920** **Contributing Building**
Beside the house is a 1-story front-gable garage of wood, finished in German siding, with double-leaf garage doors.

House **ca. 1910** **Contributing Building**
107 W. Lee Street

This is a 1-story gable-and-wing house, finished in weatherboard, with a roof finished in metal shingles, with an L-shaped facade and a modest hip-roofed porch in the angle of the ell, incorporating replacement posts and a lattice balustrade. The house has flat-topped windows, 2/2, with original wood sash retained. A red brick chimney penetrates the ridgeline of the roof. A gabled ell is located to the rear.

House **ca. 1920** **Contributing Building**
109 W. Lee Street

This 1½-story vernacular house of wood is finished in vinyl siding, with a side-gable roof and an oversized front-gable offset on the asymmetrically-massed 3-bay façade. A hip-roofed front porch extends across the façade, supported by plain wood posts. The house has flat-topped 1/1 sash windows, and a rear gabled ell is on the south elevation.

House **ca. 1993** **Non-Contributing Building**
111 W. Jackson Street

This 2-story non-historic front-gable house of wood is finished in vinyl siding, with the main entrance and a group of three French doors on the façade, accessing a wood porch with a gable-front roof supported by Doric columns, beyond which is a pergola. The windows are flat-topped 6/6 sash.

Mebane High School **ca. 1919** **Non-Contributing Building**
210 W. Lee Street

This property is a 2-story former high school, Colonial Revival in style and cruciform in plan. It is front-gabled with hip-roofed wings and interior chimneys. Front-gabled entry porches are in the wings. A 1912 school stood immediately to the

Old South Mebane Historic District
 Name of Property

Alamance County, NC
 County and State

east. This building is finished in red brick, with flat-topped windows with multi-light replacement sash and multiple alterations to the size of the windows, the enclosure of window openings, and other compromising alterations affecting its integrity. Paved parking, modern tennis courts, a playground with equipment, and athletic playing fields are in close proximity to the north and east, respectively; they are uncounted landscape features. Portions of the building, including that which formerly housed the school's home economics program, have been converted into a local history museum of the Mebane Historical Society. The society's website notes that the organization dates from 2001 and that the museum/history center opened in 2010. The entire site is known as the Mebane Recreational Complex.

Dependency **ca. 2000** **Non-Contributing Building**
 Non-historic 1-story hip-and-gable-roofed concession/restroom facility finished in brick.

House **ca. 1930** **Contributing Building**
300 W. Lee Street

This property is a 1-story side-gabled Craftsman-style bungalow of wood, finished in vinyl siding, with a shed dormer with an awning window centered on the façade. A wrap-around porch, partially enclosed, extends across the façade and around a portion of the east elevation with battered posts resting on piers. Flat-topped windows, with some original novelty windows, have been retained. Two corbelled brick chimneys are on the rear slope of the roof and a rear gabled ell is present.

Garage **ca. 1930** **Contributing Building**
 Front-gable garage of wood construction, finished in vinyl siding, with an auto bay and a paneled door, is accessed from S. Second Street.

Carport **ca. 1980** **Non-Contributing Structure**
 Prefabricated flat-roofed metal carport with open sides.

House **ca. 1919** **Contributing Building**
301 W. Lee Street

This minimally-altered 1½-story hip-roofed Craftsman-style bungalow of wood is located on a corner lot, and is finished in weatherboard, with hipped dormers on the façade and side elevations. A Craftsman-style glazed door is retained and a wrap-around hip-roofed porch is supported by wood posts with molding and bases and is enclosed within a wood balustrade with square balusters. The original 3/1 sash windows are retained and exposed rafter tails are under the eaves of the main house and the dormers. A corbelled red brick chimney penetrates the slope of the roof.

House **ca. 1918** **Contributing Building**
302 W. Lee Street

This is a 1-story side-gable roofed Craftsman-style bungalow of wood, finished in vinyl siding, with a gable dormer centered on the façade and rear elevation. An engaged recessed front porch extends across the façade, finished in wood shingles and supported by battered wood posts resting on brick piers and enclosed within a modern wood balustrade. A 1-story hip-roofed addition is on the east elevation, along with a red brick chimney, and a 1-story ell is on the rear. Original 4/1 sash windows and a three-part window in the dormer are present.

Shed **ca. 1918** **Contributing Building**
 At the rear of the lot is a 1-story front-gabled shed of wood with a shed-roofed addition on the east side.

House **ca. 1949** **Contributing Building**
304 W. Lee Street

This is a 1-story Minimal Traditional-style side-gable-roofed house of wood, finished in vinyl siding, with a front-gabled porch centered on the 3-bay façade. The spindle frieze, turned posts, and balustrade appear to be replacements or new additions. Flat-topped windows, with 6/6 sash, and window units set singly and in pairs are present. A 1-story gabled ell is at the rear and a red brick chimney penetrates the slope of the roof on the rear. The six-light-over-panel door may be original.

Garage **ca. 1940** **Contributing Building**
 A gable-front garage of wood construction is at the rear of the lot.

House **ca. 1949** **Contributing Building**
306 W. Lee Street

This is a 1-story Ranch-style house of wood construction, finished in asbestos shingles, with a hipped roof, an interior chimney, and a recessed corner front porch on the southeast corner, with decorative metal supports and balustrade. Windows are flat-topped with original 6/6 sash and window units set singly and in groups.

Old South Mebane Historic District
Name of Property

Alamance County, NC
County and State

Primitive Baptist Church **ca. 1920** **Contributing Building**
308 W. Lee Street

This is a 1-story front-gabled Gothic Revival-style church of wood, finished in vinyl siding, with a front-gabled entry bay centered on the façade. Side elevations are of 5-bays, penetrated by lancet-arched windows. A small, three-sided hip-roofed bay projects from the north elevation. Paved surface parking is located at the rear. Sanborn maps indicate that it was built for the congregation of the local Primitive Baptist Church congregation.

House **ca. 1951** **Contributing Building**
406 W. Lee Street

This property is a 1-story Minimal Traditional-style red brick-finished house with a side-gable roof and a gabled projection at the west end of the façade, creating an L-shaped footprint, with a concrete and brick porch in the angle of the ell shielded by a canopy supported by decorative metal posts. A shorter wing is located on the east elevation with a brick façade chimney. The windows are flat-topped 1/1 sash and some replacements; a 3-part window with 2/2 horizontal sash is on the façade.

East McKinley Street

House **ca. 1917** **Contributing Building**
100 E. McKinley Street

This is a 2-story L-shaped vernacular residence of wood, finished in vinyl siding, with cornice returns, interior chimneys, and a wrap-around porch on the façade, supported by wood posts and enclosed within a replacement wood balustrade with square balusters. Flat-topped windows, 1/1, with replacement sash and exterior fixed shutters are present; a hip-roofed 1-story wing is on the east elevation.

House **ca. 1925** **Contributing Building**
101 E. McKinley Street

This resource consists of a 1½-story side-gabled 5-bay Colonial Revival-style house, likely with a central-passage plan, located on a corner lot. It is built of wood, with a wide frieze board and a centered entry shielded by a gabled Doric portico with semi-circular intrados. The entry door is capped by a semi-circular fanlight. A smaller side-gabled bay on the east elevation contains a screened porch. Windows are flat-topped with original 6/1 and 9/1 sash retained. Paired gable dormers are on the façade, two interior brick chimneys are present, a shed-roofed projecting bay is on the west elevation, and a rearward-projecting ell is present.

Garage **ca. 1960** **Contributing Building**

A front-gabled garage finished in weatherboard with a metal roof and a shed-roofed addition on the west side. The sliding door is finished with weatherboard and is protected by a pent roof.

Shed **ca. 1930** **Contributing Building**

Gable-roofed shed of wood construction with lattice-enclosed windows.

House **ca. 1966** **Non-Contributing Building**
105 E. McKinley Street

This is a 1-story brick-finished Ranch house oriented with the short end toward the street, with a low-pitched gable roof and flat-windows, with replacement 6/6 sash and exterior fixed shutters. The south end of the facade has a porch shielded by deep eaves which are supported by a square post and enclosed within a wood balustrade. A small frame gabled addition is located to the rear.

Garage **ca. 1970** **Non-Contributing Building**

Gable-front garage of wood construction finished in vinyl siding, with a smaller shed-roofed addition with exposed rafter tails and latticed window openings.

West McKinley Street

House **ca. 1950** **Contributing Building**
101 W. McKinley Street

This is a side-gabled 2-story residence of wood, likely with a side-passage interior plan, finished in vinyl siding, with a 2-bay façade and an exterior brick chimney offset on the façade. A flat roofed porch is supported by square posts. Windows are flat-topped, with replacement sash and a 2-story addition is located on the rear, flanked by one- and two-

Old South Mebane Historic District
Name of Property

Alamance County, NC
County and State

story additions.

House **ca. 1940** **Non-Contributing Building**
104 W. McKinley Street

This is a 1-story gable-front residence of wood, finished in vinyl siding, with a slightly-projecting front-gabled porch supported by columns on brick piers on the southwest corner of the façade beside which is a projecting shed-roofed bay. The house has an interior brick chimney, flat-topped windows, with replacement 1/1 sash and some windows with exterior fixed shutters. The property is similar to its neighbor at 108 W. McKinley Street. A substantial shed-roofed attached carport supported by decorative metal posts is on the west elevation, a large exterior brick chimney has been added to the façade, and a large and modern side-gabled addition has been added on the east elevation, all of which have compromised the historic integrity of the property.

Garage **ca. 2000** **Non-Contributing Building**

A substantial non-historic gable-front garage of wood construction, finished in vinyl set at the back of a paved driveway behind the carport. It has one auto bay with a lift door.

Shed **ca. 1940** **Contributing Building**

Front-gabled shed of wood construction, sparse in its details.

House **ca. 1930** **Contributing Building**
105 W. McKinley Street

This building is a 1-story gable-front house of wood construction, finished in weatherboard siding, with a forward-projecting front-gabled corner porch, supported by battered posts on piers, and a shed-roofed bay on the façade. A rectangular louvered vent is in the gable on the façade and exposed rafter tails are under the eaves. The entry door is 8-light-over-panel and likely original, and an interior brick chimney is present. The windows are flat-topped 1/1 sash. This is similar to the properties at 108, 104, and 109 W. McKinley Street.

Shed **ca. 1930** **Contributing Building**

Gable-roofed shed of wood, with a metal roof, located behind a stockade fence.

House **ca. 2002** **Non-Contributing Building**
107 W. McKinley Street

This a 1-story non-historic gable-front house of wood, finished in vinyl siding, with a 3-bay façade and a centered entry shielded by a shed-roofed porch with square supports and a wood balustrade. Windows are flat-topped 1/1 sash and exterior fixed shutters. The house has a deeper setback than other buildings in the district.

Shed **ca. 2002** **Non-Contributing Building**

Prefabricated 1-story gabled shed of wood construction finished in weatherboard, less than fifty years of age.

House **ca. 1940** **Contributing Building**
108 W. McKinley Street

This 1-story residence is of wood, finished in vinyl siding, with a front-gable roof, with a slightly-projecting front-gabled porch, supported by battered posts on piers on the southwest corner of the façade beside which is a shed-roofed bay window. An 8-light-over-panel front door has been retained. Windows are flat-topped with replacement 1/1 sash and some with exterior fixed shutters. It is similar to its neighbor at 104 W. McKinley Street.

House **ca. 1930** **Contributing Building**
109 W. McKinley Street

This 1-story front-gable house is of wood construction, finished in vinyl siding, with a forward-projecting front-gabled corner porch and a shed-roofed projecting bay on the façade. A rectangular louvered vent is in the gable on the façade. Windows are flat-topped with multi-light replacement sash. A small shed-roofed enclosed porch or an addition is on the rear elevation and a shed-roofed porch is on the west elevation. This is similar to the properties at 104, 105, and 108 W. McKinley Street.

Garage **ca. 1930** **Contributing Building**

At the rear of the lot is a front-gable garage of wood construction, finished in board-and-batten, with a double-leaf door and a shed-roofed side addition.

House **ca. 1925** **Contributing Building**
202 W. McKinley Street

This vernacular 1-story gable-front house is of wood construction, finished in vinyl siding, with a screened-in shed-roofed front porch and a paired window unit in the gable end on the façade. Windows are flat-topped with 1/1 replacement sash and some with exterior fixed shutters, and a rear shed-roofed addition is present.

Old South Mebane Historic District
Name of Property

Alamance County, NC
County and State

- | | | |
|--|-----------------|-----------------------------------|
| Garage
A rearward-sloping shed-roofed garage of wood, with vertical board siding and a double-leaf garage door, is at the end of a driveway. | ca. 1930 | Contributing Building |
| House
203 W. McKinley Street
This 1-story vernacular gable-front house is of wood construction, finished in weatherboard, with a 3-bay façade and a centered entry. A hip-roofed front porch extends across the façade, supported by turned posts and enclosed within a modern wood balustrade with square balusters. Windows are flat-topped with multi-light replacement sash and some exterior fixed shutters. An interior chimney is present and above the porch, in the gable end, is a louvered vent and on the rear is a shed-roofed addition. | ca. 1927 | Contributing Building |
| Garage
This is a gable-front garage of wood construction, finished in shiplap siding, with a louvered vent in the gable end. The opening is sheltered by a pent roof and two telescoping gabled additions are on the rear. | ca. 1930 | Contributing Building |
| House
204 W. McKinley Street
This 1-story side-gable-roofed vernacular house is of wood, with a parged foundation, vinyl siding, a small gabled wall dormer centered on the façade, and two gabled dormers on the rear. A shed-roofed front porch, with replacement decorative metal supports, extends across the façade and shields the main entry which incorporates sidelights. Windows are flat-topped mostly with replacement multi-light sash and some with exterior fixed shutters; original 6/1 sash are in the dormers. A shed-roofed addition is on the rear. | ca. 1925 | Contributing Building |
| Shed
A 1-story gabled shed of wood construction, finished in German siding. | ca. 1925 | Contributing Building |
| House
206 W. McKinley Street
This 1-story vernacular side-gable-roofed house is of wood construction, with a centered gable on the façade incorporating a rectangular louvered vent in the gable end. The original glazed-over-panel door has been retained. At least two early shed-roofed additions have been built onto the rear (north) elevation. Windows are flat-topped with 6/6 replacement sash. A hip-roofed front porch with replacement decorative metal supports extends across the façade and a central chimney of brick penetrates the ridgeline of the roof. | ca. 1930 | Contributing Building |
| Dependency
At the rear of the lot is a 1-story front-gabled wood dependency with a metal roof and a shed-roofed porch with square posts, which may have served as a secondary dwelling on the lot or as a storage facility. | ca. 1930 | Contributing Building |
| Carpport
Front-gable open-sided modular metal carport. | ca. 2000 | Non-Contributing Structure |
| Shed
Gable-front shed of wood, finished in weatherboard with a door in the front gable end and a window in the rear gable end. | ca. 1930 | Contributing Building |
| House
208 W. McKinley Street
This 1-story house is of wood construction, finished in vinyl, with a front-gable roof, an interior chimney, and an asymmetrical façade which appears to be the result of a major alteration or a reorientation of the original house. Windows are flat-topped with window units set singly and in pairs, with replacement 6/6 sash and exterior fixed shutters. A substantial non-historic shed-roofed addition is on the east elevation, impacting both the façade and the east elevation. | ca. 1952 | Non-Contributing Building |
| House
309 W. McKinley Street
This 1-story gable-front vernacular house is of wood construction, finished in vinyl siding, with a shed-roofed hood over the main entrance, which is incorporated into a recessed porch offset on the right side of the façade. Square support posts and knee brackets are sheathed in vinyl. The windows are flat-topped with replacement multi-light sash and with some windows having fixed exterior shutters. | ca. 1921 | Contributing Building |
| Carpport
Open-sided gabled carport of wood construction. | ca. 2000 | Non-Contributing Structure |

Old South Mebane Historic District
Name of Property

Alamance County, NC
County and State

House 311 W. McKinley Street	ca. 1920	Contributing Building
This is a 1-story hip-roofed vernacular house of wood construction, finished in vinyl siding, with an interior brick chimney and an extension of the roof forming a hood over a recessed porch on the right front corner of the house. A metal balustrade is present, as is vertical sheathing under the porch. Windows are flat-topped with replacement sash and with some windows having fixed exterior shutters. A modern deck/porch is on the east elevation.		
Dependency Prefabricated gabled storage building behind main house.	ca. 2000	Non-Contributing Building
Garage A non-historic garage of wood construction, with a gable roof, is behind the house.	ca. 2000	Non-Contributing Building

South Second Street

Duplex 106-108 S. Second Street	ca. 1920	Contributing Building
The property is a 1-story duplex of wood construction finished in vinyl siding, with interior brick chimneys, a side-gable standing-seam metal roof, and a front-gable roof on the south end of the façade; a decorative gable is located in the center of the north section. A hip-roofed porch extends along the entire length of the façade, serving both units. Flat-windows with replacement sash on the south end and 2/2 sash on the north end; exterior fixed shutters are throughout. A 6-light-over-panel door remains on the south section. Each section has a gabled rear ell with additions filling the space between.		
Shed Gabled frame shed.	ca. 2000	Non-Contributing Building

House 202 S. Second Street	ca. 1961	Contributing Building
This is a 1-story Minimal Traditional-style house of wood, finished in vinyl siding, with a symmetrical 3-bay façade and a centered entry, accessed from a small shed-roofed porch, supported by square posts with a metal balustrade, which is integrated into the slope of the main roof. A small red brick furnace chimney rises along the rear slope of the roof. The flat-topped windows are 2/2 horizontal replacement sash.		
Shed Gable-front shed at rear of wood construction, with a metal roof and an open shed-roofed bay to the south.	ca. 1961	Contributing Building

House 203 S. Second Street	ca. 1975	Non-Contributing Building
This consists of a 1-story Ranch house of wood, finished in vinyl siding, with a side-gable roof and an asymmetrical 4-bay façade, less than fifty years of age. A shed-roofed hood is over a wood stoop which also has a wood balustrade, and additions are on the south and east elevations.		
Garage This 1-story T-111-finished non-historic side-gabled garage with two lift doors is located in front of the house along the street.	ca. 1975	Non-Contributing Building
Shed Prefabricated wood shed.	ca. 1975	Non-Contributing Building
Shed Prefabricated wood shed.	ca. 1975	Non-Contributing Building

House 204 S. Second Street	ca. 1968	Non-Contributing Building
This is a 1-story Ranch house finished in red brick with a low-pitched side-gable roof, deep eaves, and an asymmetrical 5-bay façade. Windows are flat-topped with 4/4 and 6/6 replacement sash, including a 3-part window, and exterior fixed shutters. Interior and exterior brick chimneys are present, and a wood deck is at the entry. Public documents indicate that it is less than 50 years of age.		
Shed Front-gable wood shed with a shed-roofed addition at the rear	ca. 1968	Non-Contributing Building

Old South Mebane Historic District
Name of Property

Alamance County, NC
County and State

- | | | |
|---|-----------------|-----------------------------------|
| House
206 S. Second Street | ca. 1910 | Contributing Building |
| <p>This is a substantial 1-story Queen Anne-style house of wood, clad in vinyl, with a hipped roof and paired gablets on the façade, between which is a shed dormer. A wrap-around porch with Doric columns extends across the façade and around portions of the north and south elevations. The main entrance is centered on façade, with an entry door enframed within sidelights over panels. Palladian-influenced windows are on the gable ends on the façade and original 1/1 sash have been retained. Paired red brick chimneys with modest corbelling penetrate the rear slope of the roof. The south end of the façade has a bay window, another bay is located under the gabled roof on the south elevation, and a gabled rear ell is present.</p> | | |
| Shed | ca. 1970 | Non-Contributing Building |
| <p>Side-gabled shed of wood construction, finished in weatherboard, with a door and a 4/4 window, appearing to be less than fifty years of age.</p> | | |
| Warehouse
Southeast corner of S. Second Street and W. Lee Street | ca. 1949 | Contributing Building |
| <p>This 1-story concrete block storage building is owned by the Town of Mebane and is presumably used for public works storage. It has a front-gable roof with an overhead door and a single door in the north gable end. The building faces W. Lee Street.</p> | | |
| Vacant Lot | | |
| Vacant Lot | | |
| House
407 S. Second Street | ca. 1919 | Non-Contributing Building |
| <p>This is a 2-story vernacular house with a side-gable roof and hip-roofed front porch supported by plain replacement wood posts. Oversized multi-light windows flank the main entrance, above which are 1/1 sash windows on the second floor, some with exterior fixed shutters. The house appears to have been added to, indicated by a substantial cantilevered section on the rear and a rear shed-roofed addition, with a loss of integrity.</p> | | |
| Garage | ca. 1950 | Contributing Building |
| <p>Front-gable wood garage with a single overhead door.</p> | | |
| Shed | ca. 1940 | Contributing Building |
| <p>Shed-roofed building clad in vinyl.</p> | | |
| House
409 S. Second Street | ca. 1919 | Contributing Building |
| <p>This is a minimally-altered 1½-story side-gable-roof vernacular residence of wood, likely with a central-passage interior plan, finished in weatherboard, with a hip-roofed front porch and 3-bay façade. The main house has a pressed metal shingle roof and the front porch is finished in standing seam metal; the front porch is supported by square wood posts with modest molded caps. A central chimney of red brick penetrates the ridgeline. Windows are flat-topped and retain 8/8 sash.</p> | | |
| Carport | ca. 1990 | Non-Contributing Structure |
| <p>Modern modular carport of metal located behind the house.</p> | | |
| Shed | ca. 1990 | Non-Contributing Building |
| <p>Modern shed of wood, located behind the house, with a shed roof and a shed-roofed hood shielding the door and windows; it is finished in plywood sheathing.</p> | | |
| Shed | ca. 1920 | Contributing Building |
| <p>Modest shed-roofed shed of wood construction, with a shed roof shielding the façade.</p> | | |
| Apartment Building
413A-413B S. Second Street | ca. 1938 | Contributing Building |
| <p>This is a 2-story brick-finished building with a front-gable roof and a 1-story gable-roofed rear wing on the rear (east) gable end; portions of the gable ends are finished in vinyl. There are two interior brick chimneys. The building has 1/1 sash replacement windows and glazed-over-panel doors on the first floor of the west elevation and the second floor on the north elevation. A modern wood stair is on the north elevation. Although modest in its detail, public documents indicate that it does date from within the Period of Significance of the district.</p> | | |

Old South Mebane Historic District
Name of Property

Alamance County, NC
County and State

House **ca. 1920** **Contributing Building**
501 S. Second Street/207 W. McKinley Street

The portion of the building facing S. Second Street is a 2-story vernacular side-gable-roofed I-house with a centered entry on the façade and a shed-roofed front porch supported by plain wood posts. Partial cornice returns are present and a single 4/1 fixed window is in a central roof gable on the façade. Windows are flat-topped 1/1 sash, with asymmetrical sash configuration. A rear gabled ell with a gable on the north elevation has the address 207 W. McKinley Street. It retains a 4/1 fixed window in its gable end and 6/6 sash. An offset door leads to a shed-roofed porch that extends the full length of this section. The porch is supported by plain square posts and a gabled ell extends off the east end of the rear of this section. An interior red brick chimney rises at the rear of main house.

Vacant Lot

House **ca. 1920** **Contributing Building**
507 S. Second Street

This is a 1-story bungalow of wood construction, clad in vinyl siding, with a hipped roof and a hipped dormer on the façade. A tall interior chimney penetrates the roof and the house features a wrap-around porch supported by plain posts and enclosed with a modern balustrade with square balusters; part of the porch is enclosed with lattice. Windows are flat-topped windows with 4/4 and 6/6 replacement sash.

South Third Street

House **ca. 1949** **Contributing Building**
204 S. Third Street

This is a 1-story Minimal Traditional-style house finished in red brick with a side-gable roof, interior and gable-end chimneys, and an offset forward-projecting gabled wing on the south side of the façade, with an oculus in the gable end, creating an L-shaped facade. In the angle of the ell on the façade is a small shed-roofed stoop. A shed-roofed metal awning, supported by decorative metal posts has been added to the façade within the "L." The door appears original. Windows are flat-topped 6/6 sash and a 3-part window on the façade. Some windows exhibit exterior fixed shutters and metal awnings. An attached side-gabled carport is set back on the north elevation; it is supported by square posts set on a low brick wall. The rear (west) end of the carport is enclosed.

Shed **ca. 1990** **Non-Contributing Building**
Gambrel-roofed prefabricated shed of wood

House **ca. 1920** **Contributing Building**
206 S. Third Street

This is a 1-story Craftsman-style house of wood construction, finished in vinyl siding, with a front-gable roof and louvered vents in the gable end on the façade. A 9-light-over-paneled door is present and knee bracing is under the eaves. The house exhibits a 3-bay façade and hip-roofed front porch, supported by battered wood posts resting on brick piers. Windows are flat-topped with original 4/1 sash retained. Chimneys penetrate the slope of the roof on the north.

Shed **ca. 1950** **Contributing Building**
Modest front-gabled shed of wood finished in vertical boards.

Garage **ca. 1970** **Non-Contributing Building**
Front gable garage of concrete block construction with an overhead lift door.

House **ca. 1910** **Contributing Building**
207 S. Third Street

This is a 1-story hip-roofed Queen Anne-style house of wood, retaining historic weatherboard siding and a wide frieze board, with a forward-projecting gabled wing on the façade, with cornice returns of the cornice, chamfered corners, and sawn stylized brackets under the eaves. This wing creates an L-shaped footprint and in the angle of the ell is a wrap-around porch supported by capped square wood posts. Fixed multi-light windows are in the gables. Rear gabled dormers are present and windows are flat-topped with multi-light replacement sash. Shed-roofed back porch and interior corbelled red brick chimneys along with a rear gabled ell a cut-away gable-roofed bay on the north elevation.

House **ca. 1950** **Contributing Building**
209 S. Third Street

This is a 1-story Minimal Traditional-style side-gable-roofed house of wood, finished in vinyl siding, with an interior

Old South Mebane Historic District
 Name of Property

Alamance County, NC
 County and State

chimney and a somewhat smaller gable-roofed side wing on the south gable end. Windows are flat-topped set singly and in pairs, with replacement 1/1 sash and fixed exterior shutters. The main entrance is centered on the main block of the house, shielded by a porch with a metal awning supported by unadorned metal posts.

Shed **ca. 2000** **Non-Contributing Building**
 Gambrel-roofed prefabricated shed of wood construction behind the main house.

House **ca. 1925** **Non-Contributing Building**
210 S. Third Street

This is a heavily-altered 1½-story vernacular house of wood construction finished in vinyl siding, with a side-gable roof and a flush gabled wing on the south side of the façade. The house has a 3-bay façade with a centered entrance, incorporating a single door enframed within a modest dentiled frontispiece and accessed by a small masonry stoop with a modern wood balustrade. A shed dormer is on the south elevation. Windows are flat-topped with replacement sash with exterior fixed shutters. One-story additions are on the rear (west) elevation. It appears that the original front porch has been removed, resulting in a loss of historic architectural integrity.

First Baptist Church of Mebane **1947; 1969** **Contributing Building**
301 S. Third Street

This property is a red brick-finished Gothic Revival-style church built in stages, located on a corner lot, with the original building exhibiting a front-gabled roof, oriented toward W. Jackson Street, and square crenellated towers with lancet-arched louvers in the belfries. Windows are 4-point-arched with tracery, stone trim, and religious art glass. Cornerstones bear the dates 1901 and 1947. The main entry consists of a double-leafed paneled door with a multi-light 4-point-arched transom. Square corner towers are located between the rear elevation and a perpendicular 2-story side-gabled wing with an end chimney and stone coping on the peaked parapet end walls. A short 2-story brick connector links the church to a perpendicular 2-story-on-basement 1969 Neo-Colonial annex east of the church, also finished in red brick with a low side-gabled roof. The 1969 wing has 4/4 and 6/6 sash windows and former square towers on the corners of the north elevation have been truncated and covered by the roof. A wide gabled porte-cochere is located on the east elevation. A large expanse of paved parking, extending southward to W. Lee Street, is associated with the church. The church's website notes that in 1901, the nearest Baptist church was ten miles away. Strong Methodist and Presbyterian congregations existed in town and in 1901 a group of twenty-one citizens came together to formally found the Mebane Baptist Church (the name changed to First Baptist Church of Mebane in 1946), under the leadership of the Rev. L. N. Chappell, a former missionary to China and an employee of the Baptist State Convention of North Carolina. The congregation shared space with Mebane Presbyterian Church until 1907 when a new church was completed on the site of the present church. In 1928, the church burned and for years the congregation met in an adjacent education building until the present church was built in 1947-1948.

House **ca. 1910** **Contributing Building**
400 S. Third Street

This is a distinctive 2-story Queen Anne-style residence of wood with a wide frieze board and the original beaded weatherboard intact, with a steeply pitched hipped roof with projecting front and side gables and flat-topped 1/1 sash windows, along with stylized Palladian windows in the gable ends. Two-story cut-away bay windows incorporate sawn brackets under the eaves and brick chimneys penetrate the slopes of the roof. A wrap-around porch with a spindle frieze extends across the façade and the north elevation, with a roof of standing-seam metal and square posts. Also present is a 1½-story rear ell.

Shed **ca. 1940** **Contributing Building**
 Gable-front shed of wood construction

House **ca. 1915** **Contributing Building**
401 S. Third Street

This is a 1-story vernacular gable-and-wing house of wood construction, located on a corner lot and finished in vinyl siding, with a wrap-around porch supported by replacement turned posts, with a standing-seam metal roof. Cornice returns are present along with flat-topped windows with novelty sash smaller than the original openings and some 6/6 replacement units. The house also has interior chimneys and a rear gabled ell.

Shed **ca. 1920** **Contributing Building**
 Side-gable shed with a double-leaf front door, minimal in its detailing.

Carport **ca. 2000** **Non-Contributing Structure**
 Open-sided flat-topped metal carport.

Old South Mebane Historic District
 Name of Property

Alamance County, NC
 County and State

House **ca. 1915** **Non-Contributing Building**
402 S. Third Street

This is a 1-story vernacular house, finished in red brick which represents a later brick veneer incompatible with the character of the house or the neighborhood. The building has a side-gable roof and two rear gabled ells; vinyl siding is in the gable ends along with octagonal louvered vents. The house has a 3-bay façade with a centered entrance shielded by a small shed-roofed porch supported by modest replacement wood posts and enclosed within a wood balustrade with square balusters. A prominent center gable is over the front door. Flat-topped windows, with 1/1 sash units are set singly and in pairs and chimneys are present on the north and west elevations. Because of the brick veneering, this is a non-contributing element in the district.

Shed **ca. 1960** **Contributing Building**
 Gable-roofed shed of wood construction.

Shed **ca. 1960** **Contributing Building**
 Gable-roofed shed of wood construction.

House **ca. 1915** **Contributing Building**
404 S. Third Street

This property is a 1-story vernacular gable-and-wing house of wood, finished in vinyl siding, with a shed-roofed porch in the angle of the ell on the façade, with replacement posts and balustrade. Partial returns of the cornice are on the gable ends along with circular louvered vents. Flat-topped windows retain the original 6/6 sash and exhibit exterior fixed shutters.

House **1947** **Contributing Building**
405 S. Third Street

This is a 1½-story Cape Cod-style residence of wood, finished in vinyl siding, with a side-gable roof, an exterior gable-end red brick chimney, and paired gabled dormers on the 3-bay façade. The centered entry is shielded by a front-gabled porch supported by plain wood posts. A side-gabled wing is set back on the south elevation, behind a shed-roofed side porch. Windows are flat-topped with replacement 6/6 sash set singly and in pairs. The entries have Craftsman-style 3-vertical-light-over-3-panel doors.

Shed **ca. 2000** **Non-Contributing Building**
 A 1-story metal prefabricated shed

House **ca. 1920** **Contributing Building**
406 S. Third Street

This is a 1-story gable-and-wing house of wood, finished in vinyl siding, with a shed-roofed porch in the angle of the ell on the façade; the porch is supported by replacement decorative metal posts. Windows are flat-topped with 2/2 horizontal sash and exterior fixed shutters. A 1-story addition or enclosed porch is on the rear. An interior brick chimney penetrates the rear slope of the roof.

Shed **ca. 1920** **Contributing Building**
 Modest side-gabled storage shed or playhouse of wood finished in shiplap siding, with fixed windows and a shed-roofed porch supported by plain posts.

Shop **ca. 1990** **Non-Contributing Building**
 Non-historic front-gable building with two doors, likely a shop, of wood construction.

House **ca. 1900** **Contributing Building**
407 S. Third Street

This is a 1-story house of a similar house type seen elsewhere in the district, of wood finished in aluminum siding, incorporating a side-gable roof, an interior chimney, and forward-projecting gable-end-oriented wings on both ends of the façade, with cornice returns on the gable ends. A hip-roofed porch extends across the façade, supported by plain wood posts, trimmed with sawn brackets and a wood balustrade with square wood balusters, which may be a replacement element. Windows are flat-topped with some original 2/2 sash and some 4/4 replacement units. Early additions are on the rear.

House **ca. 1920** **Contributing Building**
408 S. Third Street

This is a 2-story Queen Anne-style vinyl-clad house of wood construction with a hipped roof with an interior chimney and projecting side, rear, and front gabled roofs of standing-seam metal and circular vents in the gable ends with incised floral motifs. The house exhibits a centered entry and a shed-roofed front porch supported by battered wood posts resting on

Old South Mebane Historic District
 Name of Property

Alamance County, NC
 County and State

brick piers. Flat-windows, with both large multi-light fixed original sash on the first floor of the façade and replacement windows. A 1-story rear gabled ell is present.

Garage **ca. 1920** **Contributing Building**
 A gable-front wood garage with a double-leaf door and shed-roofed additions on the north and south elevations is at the end of a gravel driveway behind the house

House **ca. 1900** **Contributing Building**
409 S. Third Street
 This is a 2-story vernacular gable-and-wing residence of wood, finished in vinyl siding, with interior brick chimneys and rear additions. Cornice returns are in the gable ends along with semi-circular louvered vents. Windows are flat-topped with 1/1 replacement sash. A hip-roofed open porch on the façade and south elevation is supported by turned posts with a modern wood balustrade; the north portion of the porch has been enclosed.

House **ca. 1958** **Contributing Building**
410 S. Third Street
 This resource is a 1-story Minimal Traditional-style house of smooth-dressed concrete block, with weatherboard in the gable ends and a side-gable roof, with a central chimney penetrating the front slope and an attached shed-roofed carport of wood on the north gable end. A rearward-projecting ell extends westward. Windows are flat-topped set on concrete sills, with metal frame awning sash units. The main entrance is centered on the façade, with a door with horizontal panes over panels, and is accessed from a small stoop shielded by a shed-roofed metal awning and featuring a decorative metal balustrade.

House **ca. 1919** **Contributing Building**
411 S. Third Street
 This is a 1-story vernacular gable-and-wing house of wood, finished in vinyl siding, with an L-shaped façade and a hip-roofed porch in the angle of the ell, supported by replacement turned posts and trimmed with what appear to be replacement sawn brackets. An interior brick chimney is present and windows are flat-topped set singly and in pairs, with multi-light replacement sash and exterior fixed shutters. Rear shed-roofed additions are present.

House **ca. 1920** **Contributing Building**
412 S. Third Street
 This is a 1-story hip-roofed vernacular house on a corner lot, finished in vinyl siding, with projecting front and side gables, interior brick chimneys and an exterior chimney on north elevation, and several early additions on the rear (west) elevation. A hip-roofed projecting bay is on the north elevation and pointed louvered vents are in the gable ends. A wrap-around porch, partially enclosed, is in the angle of the ell on the façade, supported by battered wood posts resting on brick piers. Windows are flat-topped with replacement 1/1 sash and exterior fixed shutters.

Dependency **ca. 1920** **Contributing Building**
 A 1-story front-gable vernacular wood building at the rear of the lot, facing W. McKinley Street; finished in rolled asphalt, with a 3-bay façade, a centered double-leaf entrance door, and fixed 9-light sash. The roof is sheathed with metal. Its appearance suggests that it may have served a commercial purpose.

House **ca. 1910** **Contributing Building**
413 S. Third Street
 This is a 1-story gable-and-wing vernacular house of wood, finished in vinyl siding, with an L-shaped façade and a hip-roofed porch in the angle of the ell on the façade; the porch is supported by plain wood posts. The house features a standing-seam metal roof, an interior chimney, and cornice returns on the exposed gable ends. Windows are flat-topped with replacement 1/1 sash and exterior fixed shutters.

Carport **ca. 1990** **Non-Contributing Structure**
 Open-sided modular metal carport

Garage **ca. 1920** **Contributing Building**
 Front-gable garage of wood with double-leaf garage doors

House **ca. 1920** **Contributing Building**
415 S. Third Street
 This is a 1-story Craftsman-style bungalow of wood, finished in vinyl siding and located on a corner lot, with a hipped roof penetrated by hipped dormers on the façade and south elevation and incorporating a wrap-around porch supported by battered wood posts resting on brick piers. Windows feature the original 8/1 Craftsman-style sash. It appears that an

Old South Mebane Historic District
 Name of Property

Alamance County, NC
 County and State

early shed-roofed addition has been built onto the rear (east) elevation. Interior painted brick chimneys penetrate the slope of the roof.

Carport ca. 1990 **Non-Contributing Structure**
 Open-sided modular metal carport

Garage ca. 1920 **Contributing Building**
 Front-gabled garage with exposed purlins and rafter ends, German siding and a double-leaf door.

House ca. 1910 **Contributing Building**
500 S. Third Street

This is a 2-story Triple-A I-house of wood construction, finished in vinyl siding, located on a corner lot, with a side-gable roof and an exterior gable-end red brick chimney on the south gable end. The house has a 3-bay façade with a centered entrance, with a wrap-around front porch supported by Doric columns. The house has flat-topped windows with 1/1 replacement sash and exterior fixed shutters. A one-story rearward-projecting gable-roofed ell is on the west elevation.

Shed ca. 1990 **Non-Contributing Building**
 Modular front-gabled shed of wood construction with a double-leaf door, which is less than fifty years of age.

Shed ca. 1970 **Non-Contributing Building**
 Shed-roofed building of wood construction, with plywood sheathing and an offset door, which is less than fifty years of age.

Garage ca. 1930 **Contributing Building**
 Side-gabled garage oriented to McKinley Street

House ca. 1926 **Contributing Building**
501 S. Third Street

This is a 1-story Craftsman-style bungalow of wood, finished in weatherboard, with a hipped roof penetrated by hipped dormers and incorporating a wrap-around porch supported by battered wood posts resting on brick piers. A hip-roofed porte-cochere is on the north elevation and the main entry features a door with art glass over panels. Windows are flat-topped with original 3/1 sash. A brick chimney penetrates the slope of the roof.

Shed ca. 1930 **Contributing Building**
 A 1-story front-gabled wood shed finished in shiplap siding with a standing-seam metal roof and exposed rafter tails

House ca. 1948 **Non-Contributing Building**
502 S. Third Street

This is a 1-story Minimal Traditional-style house of wood construction, finished in vinyl siding, with a side-gable roof penetrated by a central chimney along the ridgeline. A side-gabled wing is on the north elevation. The property is sparsely detailed, with flat-topped windows with multi-light replacement sash and exterior fixed shutters. A flat-roofed wing has been added to the south end of the façade and wraps around to the south elevation; the front-gabled porch has been enclosed as part of this change, with a loss of integrity

House ca. 1910 **Contributing Building**
503 S. Third Street

This property is a 1-story vernacular side-gable house of wood, finished in vinyl siding, with a center gable on the 3-bay façade along with a shed-roofed porch supported by replacement wood posts and enclosed with a replacement wood balustrade with square wood balusters. The original double-leaf glazed-over-panel entry door has been retained. Windows are flat-topped with 4/4 sash and exterior fixed shutters. A projecting gable-end addition is on the south elevation with an exterior chimney of red brick; other additions are present, including a rear gabled ell.

Dependency ca. 1930 **Contributing Building**
 A gable-roofed dependency of wood.

House ca. 1910 **Contributing Building**
504 S. Third Street

This is a 2-story 3-bay I-house of wood with a 1-story rear gabled ell, finished in vinyl siding, with a side-gable-roof, a taller hip-roofed rear block, and a center gable on the façade. The roof is finished in standing-seam metal and the hip-roofed porch features replacement turned posts and a lattice railing. The gable ends are pedimented and windows are flat-topped 1/1, with replacement sash and exterior fixed shutters. Interior red brick chimneys are on the rear slopes of the main roof.

Old South Mebane Historic District
 Name of Property

Alamance County, NC
 County and State

Shed Gable-front shed of wood construction, small in scale and sparse in detailing	ca. 1950	Contributing Building
Shed Prefabricated metal shed.	ca. 1970	Non-Contributing Building
House 505 S. Third Street This is a 1-story vernacular house of wood, finished in vinyl siding, with a hipped roof and gabled-roofed projections on all elevations. Windows are flat-topped with replacement 1/1 sash and exterior fixed shutters. The building exhibits an L-shaped façade with a small hip-roofed porch in the angle of the ell, with replacement wood supports and balustrade. A rear gabled ell and other additions are present.	ca. 1930	Contributing Building
Garage Gable-front garage with one auto bay, built of concrete block.	ca. 1950	Contributing Building
Carport Prefabricated gable-front metal open-sided carport.	ca. 1990	Non-Contributing Structure
House 507 S. Third Street This is a 1-story vernacular house of wood, finished in vinyl siding, with a hipped roof with gabled wings and L-shaped façade, with a hip-roofed porch in the angle of the ell. The porch is supported by replacement turned wood posts and enclosed within a replacement wood balustrade with turned balusters and a modern spindle frieze. Large louvered vents are in the gable ends and a rear gabled ell is present. The house has flat-topped windows with replacement 4/4 sash and exterior fixed shutters.	ca. 1920	Contributing Building
Shed Side-gabled shed.	ca. 1920	Contributing Building
Playhouse Diminutive 2-story side-gabled playhouse of wood construction with a shed-roofed front porch.	ca. 1990	Non-Contributing Building

East Wilson Street

House 102 E. Wilson Street This is a two-story hip-roofed American Foursquare form house of wood, substantial in scale and finished in weatherboard siding, with a hipped dormer centered on the façade, with three multi-light sashes within. The main door has sidelights and modillions are under the eaves. A hip-roofed porch is supported by oversized paneled wood posts resting on brick piers and enclosed within a modern wood balustrade. Windows are flat-topped windows, including 1/1 and 4/1 Craftsman-style sashes, with modest surrounds. One-story sections are at the rear and an interior brick chimney is present.	ca. 1922	Contributing Building
House 104 E. Wilson Street This is a 2-story Craftsman-derived residence of wood, finished primarily in shiplap siding, with a front-gable roof with a 2-story side-gabled wing on the east elevation. The house has a gable-front porch, supported by battered wood posts resting on brick piers and enclosed within a plain wood balustrade with square balusters. The main entry door is enframed within sidelights and the gable ends and fascia boards are finished in square-butt wood shingles. Windows are flat-topped 1/1, with original historic sash and a three-part window. Cornice returns are present on the façade gable.	ca. 1920	Contributing Building
Shed Prefabricated front-gabled shed of wood construction, less than fifty years of age.	ca. 2000	Non-Contributing Building

Old South Mebane Historic District
Name of Property

Alamance County, NC
County and State

8. Statement of Significance

Applicable National Register Criteria

(Mark "x" in one or more boxes for the criteria qualifying the property for National Register listing.)

- A Property is associated with events that have made a significant contribution to the broad patterns of our history.
- B Property is associated with the lives of persons significant in our past.
- C Property embodies the distinctive characteristics of a type, period, or method of construction or represents the work of a master, or possesses high artistic values, or represents a significant and distinguishable entity whose components lack individual distinction.
- D Property has yielded, or is likely to yield, information important in prehistory or history.

Criteria Considerations

(Mark "x" in all the boxes that apply.)

Property is:

- A Owned by a religious institution or used for religious purposes.
- B removed from its original location.
- C a birthplace or grave.
- D a cemetery.
- E a reconstructed building, object, or structure.
- F a commemorative property.
- G less than 50 years old or achieving significance within the past 50 years.

Areas of Significance

(Enter categories from instructions.)

ARCHITECTURE

Period of Significance

c. 1900-1961

Significant Dates

N/A

Significant Person

(Complete only if Criterion B is marked above.)

N/A

Cultural Affiliation

N/A

Architect/Builder

Unknown

Period of Significance (justification)

The Period of Significance begins c. 1900, the date of construction of the earliest of the buildings in the historic district and extends to 1961, spanning the primary years of development of the nominated area. Although a small amount of development in the district continued past 1961, it is not of exceptional significance.

Criteria Considerations (explanation, if necessary)

N/A

Old South Mebane Historic District
Name of Property

Alamance County, NC
County and State

Statement of Significance Summary Paragraph (Provide a summary paragraph that includes level of significance and applicable criteria.)

The Old South Mebane Historic District meets Criterion C for *architecture* on a local level as a dense and intact concentration of primarily domestic buildings dating from the first half of the twentieth century in this Piedmont North Carolina railroad community. The district retains integrity and its individual components represent the local interpretation of many of the styles and house types popular nationally during the Period of Significance, which begins c. 1900, the date of construction of the earliest houses in the district and runs through 1961. Although some development does post-date 1961, it is not of exceptional significance.

Among the formal domestic styles found in the Old South Mebane Historic District are the Queen Anne, Colonial Revival (including Georgian Revival and Dutch Colonial Revival), Tudor Revival, Period Cottage, and Craftsman styles. Houses dating from later in the Period of Significance are executed in the Ranch house and Minimal Traditional styles. Institutional buildings are designed in the Gothic Revival and Colonial Revival styles. The district also contains a significant number of properties executed without reference to any formal architectural style but which are nonetheless representative of the building traditions of this Piedmont North Carolina community. These vernacular house types include front-gable, gable-and-wing, and Triple-A houses, one- and two-story examples of which are found throughout the district.

Narrative Statement of Significance (Provide at least **one** paragraph for each area of significance.)

The Queen Anne style is the earliest formal domestic style to appear in the Old South Mebane Historic District, characteristically dating from the first decade of the Period of Significance. Queen Anne-style houses exist in various sizes, but more typically employ an irregular floor plan, sometimes variegated surface treatments, and occasionally a tower, round or multi-sided, all of which account for a lively profile and surface texture. Often, later Queen Anne-style homes incorporate Colonial Revival-style elements, such as cornice returns or pedimented gables, porch columns, or Palladian-inspired windows and gable vents. The district's best example of the Queen Anne style is the ca. 1900 frame, two-story house at 413 S. Fifth Street, which incorporates an irregular plan, a wraparound porch supported by Doric columns, and a semi-hexagonal corner tower. A less architecturally detailed example is the ca. 1900, one-story frame house at 404 S. Fifth St., which has a high hipped roof covered with pressed metal shingles, projecting gabled wings with peaked vents, wide frieze boards, and a hip-roofed porch supported by Doric columns.

As the Queen Anne style ebbed in popularity in Mebane, and overlapping the Queen Anne style, is the Colonial Revival style, harkening back to the architecture of pre-Revolutionary America. This style grew in popularity in the wake of the American Centennial of 1876, which re-kindled a patriotic fervor and an interest in late eighteenth-century design. Homes and commercial buildings alike were designed in the Colonial Revival mode, from the 1870s well into the twentieth century, some faithfully replicating eighteenth-century antecedents and others exhibiting only suggestions of the form, massing, and finishes of such buildings. Typically symmetrical in their massing, among the more prevalent references to earlier design motifs was the use of the three-part Palladian window, sometimes in its full form or a stylized representation of this distinctive window treatment; these elements are also shared with some examples of the Queen Anne style. In other instances, the Colonial Revival style is hinted at with the placement of keystones over windows or classically-derived door surrounds. Colonial Revival-style buildings and those influenced by this style in the Old South Mebane Historic District include the ca. 1950 two-story brick house at 607 S. Fifth St. with flanking one-story wings, a pedimented and transomed entry, and 12/12 sash on the upper story over the ground floor 8/8 sash windows. Another example is the ca. 1925 two-story frame house at 618 S. Fifth Street, which incorporates one-story flanking wings, a five-bay façade with a central entry with sidelights sheltered by an entry portico with curved intrados and supporting columns.

A subset of broad Colonial Revival design is the Dutch Colonial Revival style, with its defining feature, the double-sloped gambrel roof. This roof form was popularly labeled "Dutch Colonial" although such gambrel-roofed homes were built by English colonists and other immigrants as well as by the Dutch. The gambrel roof allowed a complete second story to be built at minimal expense. Another early advantage, as seen in the

Old South Mebane Historic District
Name of Property

Alamance County, NC
County and State

1798 Federal Direct Tax records, was that gambrel-roofed houses were classified for tax purposes as one-story homes, permitting them to be taxed at a lower rate than two-story houses. The Dutch Colonial Revival style gained substantially in popularity during the 1920s and early 1930s and was one of the more popular styles marketed in mail-order house catalogs. The district's representative of this style is the ca. 1920 two-story frame house at 500 S. Fifth Street. The house has a cross-gambrel roof, shingles above the first-story weatherboard, stylized cornice returns in the gambrel ends, and an engaged porch supported by Doric columns.

Another variant of the Colonial Revival style which is seen in this district is the Cape Cod house, whose antecedents were in colonial Massachusetts. Typically one- or one-and-one-half stories in height, Cape Cods have side-gable roofs, a characteristically symmetrical three- or five-bay façade with a centered entrance and, in most cases, dormers placed symmetrically on the slope of the roof. Cape Cod-style houses in this district include the 1947 one-and-one-half-story frame house at 405 S. Third Street and the ca. 1948 one-and-one-half-story frame house at 417 S. Fourth Street, both with symmetrical three-bay facades, gabled dormers, and centered entries; the house at 405 S. Third St. has a front-gable entry portico.

The Tudor Revival style referred back to English architecture of the Tudor period, and was employed for buildings large and small. In this district, Tudor Revival-style houses feature diamond-pane windows, flared eaves, and stuccoed and half-timbered gable ends. This style appears in the district most notably at 200 East Jackson Street. This is a ca. 1929 two-story brick-finished house with three gable dormers finished in half-timbering; the gables on the side elevations are similarly finished. A projecting gabled entry bay is offset on the façade and retains the original round-arched wood door set within a round-arched opening above which is an elongated round-arched louvered vent. An exterior gable-end brick chimney is on the west gable end and the windows are multi light, including some casement windows. The ca. 1939 one-story brick house at 606 S. Fifth St. is finished in polychrome red brick, with a façade chimney and a side-gable roof with flared eaves and forward projecting gable-end bays on the façade, including a "cat-slide" gabled projection on the south side of the façade and a small gable over the main door. A dormer is on the façade with diamond-paned windows. Some windows are casement, with diamond-paned lights.

The Period Cottage style, often considered a less elaborate version of the Tudor Revival style but sometimes displaying details more commonly seen on Colonial Revival-style homes, also occurs in the Old South Mebane Historic District. Such houses are characteristically one- or one-and-one-half stories in height, of wood and brick construction, with front- and side-gable roofs, modest embellishment, and often prominent façade chimneys. This style reflects the popularity of the "small-house" movement of the 1920s and 1930s. Examples in the Old South Mebane Historic District include 407 and 502 S. Fifth St. and 112 W. Jackson St. The ca. 1924 frame one-and-one-half-story house at 407 S. Fifth St. has several projecting gables on its façade, including one with a "catslide" roof. The ca. 1910 frame one-and-one-half-story house has a "catslide" front-gable orientation with an entry portico with curved intrados supported by Doric columns. The one-story house at 112 W. Jackson St. dates to ca. 1940 and is brick with a projecting gabled entry bay with an arched entry.

The Craftsman style, popular during the first three decades of the twentieth century, is found throughout the district. This mode, popularized on a national scale by the writings of Gustav Stickley and the California designs of Greene and Greene, called for one- and two-story houses along with the far more common one-and-one-half-story house. In Mebane, these are typically bungalows, one-and-one-half stories in height, of wood frame, finished in weatherboard, shingle, or brick, most with side-gable roofs, shed-roofed or engaged front porches, and dormers along the slopes of the roof. Knee brackets and exposed rafter ends under the eaves are the most common features of this style, as well as battered porch posts on piers. This district's Craftsman-style homes range from substantial domestic architecture along S. Fifth Street, to far less pretentious houses in the interior of the district. A more elaborately detailed example is the ca. 1919 one-and-one-half-story frame house found at 303 South Fifth Street. The house is side-gabled with a gabled, shingled dormer, shingles in the gabled ends over weatherboard below, knee bracing under the eaves, a large wraparound porch with curved spandrels supported by paneled posts on brick piers, and a central entry with a Craftsman-style door with matching sidelights. Some of the less imposing Craftsman-style houses are found at 410 S. Fourth Street, 104 E. Jackson Street, and 302 W. Lee Street. The ca. 1910 frame one-story house

Old South Mebane Historic District
Name of Property

Alamance County, NC
County and State

at 410 S. Fourth Street had a hipped roof, hip-roofed dormers, a Craftsman-style door, 3/1 sash, and a porch supported by battered posts on piers. The house at 104 E. Jackson dates to ca. 1918, is one story in height, side-gabled, and has shingles, knee bracing, and exposed rafter ends on its shed-roofed dormer and gabled ends. Its engaged porch has curved spandrels and is supported by paneled posts on piers. The ca. 1918 house at 302 W. Lee St. is a very simple side-gabled house with shingles, a gabled dormer and an engaged porch supported by battered posts on piers.

The ubiquitous American Foursquare, which typically is found on most streets in districts with this Period of Significance, is found but once in this district, at 414 S. Fourth Street. This Craftsman-style house dates to ca. 1920, is two stories in height, and has shingles in its upper story, and weatherboard below. Its hipped roof has flared eaves with curved rafter ends, and hipped dormers. The windows are 3/1 sash and the door is off-center.

As the district's Period of Significance drew to a close in the wake of World War Two, Ranch houses and Minimal Traditional-style homes were built in the district. A later result of the "small house" movement of the 1920s and 1930s, Minimal Traditional-style houses are typically one or one-and-one half stories in height and have a low-pitched gable or hipped roof, and generally without deep eaves. Minimal Traditional-style homes often have a forward-projecting gable offset on the façade, exhibit little ornamentation, and characteristically have very small covered porches or stoops accessing the main entrance. In some cases, integral garages are present, while in other cases garages are detached and may be set back from the house at the end of a driveway. Often the greatest architectural detail on Minimal Traditional-style houses is found in the surrounds defining the main entry door. In this district, Minimal Traditional-style houses generally date from the late 1930s through the mid-1950s. In this district, Minimal Traditional-style houses generally date from the late 1930s through the mid-1950s and include 203 S. Fourth Street and 103 E. Jackson Street. The house at 203 S. Fourth St. dates to ca. 1940. It is frame with a shorter side-gabled wing and a front-gabled porch supported with Doric columns. Dating to 1955, 103 E. Jackson St. had a three-bay façade, a small entry stoop, and a two-light-over-two-vertical-panels door.

Occurring rarely in the Old South Mebane Historic District and dating from the last fifteen years of the district's Period of Significance, Ranch houses were products of post-World War Two development. They are derived from an amalgam of the Spanish Colonial ranches of the American west and the California bungalows of the 1920s. Almost universally one story in height, Ranch houses have low-pitched hipped or side-gable roofs, with broad overhanging eaves, and are generally sparse in their ornamentation. Windows may be double-hung or sliding, and garages are often integrated into the house. In the Old South Mebane Historic District, Ranch houses are found sparsely on most of the streets in the neighborhood. Examples include 505 and 603 S. Fifth St., 102 E. Lee St., 306 W. Lee St. The ca. 1956 brick house at 505 S. Fifth St. has a projecting front-gabled wing, a three-part window, and a fluted surround on the main entry. Much simpler, the house at 603 S. Fifth St. dates to 1950, is oriented with its short gabled end to the street, and has an entry with sidelights. The house at 102 E. Lee St. has the same orientation as 603 S. Fifth St. but is frame and lacks any embellishments. The ca. 1949 frame hipped roof house at 306 W. Lee St. has a recessed corner porch.

Also scattered throughout the Old South Mebane Historic District are vernacular forms of domestic design, reflective of no particular architectural style or social movement (such as the aforementioned "small house" movement), but rather representing the local traditions and preferences of builders active in the area. Often lacking in embellishment, among these vernacular forms are modest one- and two-story side- and front-gable-roofed houses, with flat-topped windows and shed- or hip-roofed front porches. Examples include the front-gabled houses with slightly projecting front-gable corner porches at 105, 108, and 109 W. McKinley St. These houses date to ca. 1930 and ca. 1940. The houses at 301, 303, and 308 Austin St. date to ca. 1936 and 1929 and are hip-roofed with slightly recessed shed-roofed porches with corner posts and often knee bracing. Other common vernacular forms found in the district include gable-and-wing and plain 1- and 2-story side-gabled houses. Examples of the gable-and-wing house include the ca. 1914 house at 501 S. Fourth St., with cornice returns and a decorative gable on the shed-roofed porch within the L formed by the façade. The ca. 1913 house at 207 W. Holt St. has a wraparound porch, cornice returns, and diamond vents in the gable ends. The house at 107 W. Lee St. dates to ca. 1910 and has a hip-roofed porch and pressed metal shingles

Old South Mebane Historic District
Name of Property

Alamance County, NC
County and State

on the roof. Examples of 1-story side-gabled houses include the ca. 1930 house at 105 S. First St. and the ca. 1920 house at 101 E. Jackson St. Both have three-bay facades and almost no embellishment; the latter does have a central decorative gable with a sawnwork gable vent. A 2-story example is found at 301 W. Holt St. and dates to ca. 1910. The house has a three-bay façade, a hip-roofed porch, and a gabled dormer.

Among the earliest styles to appear in the Old South Mebane Historic District is the Gothic Revival, in this case a throw-back to early European religious architecture which employed the lancet arch, the arch form which points heavenward. As interpreted in rural America, Gothic Revival-style churches run the gamut from modest vernacular gable-front houses of worship, characterized by the ca. 1920 frame Primitive Baptist Church at 308 W. Lee Street, with little or no embellishment beyond the lancet-arched fenestration, to more substantial and imposing churches adorned with arcaded corbel tables of brick and a crenellated tower or towers penetrated by belfries such as the 1914 Mebane Presbyterian Church at 402 S. Fifth Street, with a crenellated corner tower, lancet-arched windows, and religious art glass. A more elaborately detailed interpretation of the Gothic Revival style appears in this district in the 1947/1969 First Baptist Church of Mebane at 301 S. Third Street. The First Baptist Church of Mebane has lancet-arched openings in its belfry but four-point arched openings for its windows and entries and stone trim.

The institutional interpretation of the Colonial Revival style appears in the 1958 addition to the aforementioned Mebane Presbyterian Church, a temple-front brick-finished building with a pedimented Corinthian portico, broken-pedimented entries, and a multi-stage cross-tipped bell tower. Secular institutional Colonial Revival-style design is seen in the ca. 1919 Mebane High School, at 210 W. Lee St., a portion of which has been converted for a local history museum, with its flat-topped multi-light windows with soldier-course lintels, cruciform plan, and gabled entrance porticos; it has been heavily altered.

Developmental history/additional historic context information (if appropriate)

The City of Mebane traces its beginnings to 1809 when a post office was established in the generally unsettled area. The town was named for Brigadier General Alexander Mebane (1744-1795), who as a boy settled on his father's land grant in the nearby Hawfields area of Orange County. He served in the North Carolina militia during the Revolutionary War and was twice elected to the U. S. Congress, serving in the Third Congress from 1793 to 1795, but dying before beginning his second term. Descended from Scots-Irish immigrants who originally settled in Pennsylvania, Alexander Mebane was also a successful innkeeper and a prosperous plantation owner. Mebane family farming and associated economic and political activity in central Hawfields gave rise to the term "Mebanesville" for the community that grew up around the post office.²

Alamance County was formed from Orange County in 1849 and the fledgling settlement began to grow with the arrival of the North Carolina Railroad in 1854.³ The railroad, which was the primary reason for the development of the community in the early days, ran just south of what would become Center Street, two blocks north of the Old South Mebane Historic District. Families from the surrounding region began to seek home sites near the tracks. Stephen A. White and Frank Mebane (both descendants of Alexander Mebane) and Thomas B. Thompson were among the first to settle in the village.⁴ The town grew rapidly and was incorporated in 1881; town records indicate that in 1882 W. H. Lasley was mayor-elect and S. A. White, W. O. Fowler, J. F. Trollinger, and D. A. White were the first commissioners.⁵ In 1883, the name of the community was shortened to "Mebane," perhaps to drop the "ville," which could have suggested a less substantial community than its leadership envisioned. In 1907, the town charter was amended to read the Town of Mebane, a name which remained in effect until 1987 when the charter was amended once again granting the community the status of a city.

² Internet website www.stoppingpoints.com/north-carolina, accessed June 15, 2011.

³ Internet website www.wikipedia.org/wiki/Alamance_County,_North_Carolina, accessed June 17, 2011; early history is also chronicled in Sallie Walker Stockard, *The History of Alamance*, (1900; rpt. 1986, Burlington: Alamance County Historical Museum).

⁴ Elinor Samons Euliss, *Alamance County: The Legacy of its People* (Greensboro: Legacy Publications, 1984).

⁵ Internet website www.cityofmebane.com, accessed May 30, 2011.

Old South Mebane Historic District
Name of Property

Alamance County, NC
County and State

Early development occurred in close proximity to the downtown and to the railroad. Mebane's industrial growth began with the 1881 establishment of the White Brothers Furniture Company by Stephen White, his brother, D. A., and a third investor who soon withdrew; it later operated as Hickory-White. The company first manufactured window sash and doors and also served as a building contractor, but in 1896 it began the exclusive manufacture of furniture.⁶ The furniture company was followed in 1904 by the Mebane Bedding Company, now Kingsdown, and in 1907 by the Ridgeville Telephone Company, now MebTel Communications.⁷ In 1916, Mill No. 8 of the Durham Hosiery Mills was built on South First Street, followed in 1922 by Mill No. 15 (NR 2010) on West Washington Street. Mebane was also a leading tobacco warehouse community.⁸ Although all of these enterprises lay outside the South Mebane Historic District, their success led to the populating of the district and contributed significantly to the economic prosperity of the downtown and of the community as a whole.

The 1900 census recorded 218 residents in the town, a figure that grew to 693 in 1910, spurred by the growth of the furniture company and the establishment of the mattress factory.⁹ The town continued to prosper throughout the first decades of the twentieth century. The 1920s marked a period of significant growth and maturity in Mebane typified by the establishment of the community's first public water supply and wastewater treatment facilities which were constructed in 1921.¹⁰ The first paving of the streets, curbing, and guttering occurred in 1922 and the town's first sidewalks were laid. During the same year, the town's first volunteer fire company was formed. The community's industrial base and the community itself prospered; the strength of the White Furniture Company is illustrated by the fact that a 1923 sawdust explosion destroyed much of the original building but it was rebuilt on the same site within an amazing seven-month span.

In 1930, the town was supporting a population of 1,568 which, with further expansion of the furniture company, grew to 2,060 in 1940. While industrialist F. L. White's palatial Neo-Classical Revival-style residence (not extant) was located outside the district, managers and workers alike built and made their homes in the Old South Mebane Historic District, with the managers occupying the spacious bungalows and houses in the district and the workers living in the modest homes and smaller bungalows which dot the district. Store owners, city officials, teachers, carpenters, and others also made their homes in the district.

As the century progressed, Mebane's economy and the Old South Mebane Historic District remained stable. Between the 1940s and the 1960s, some building continued in the historic district, although it was essentially built out by the end of the Period of Significance.

The 1980 census recorded 2,781 people living in Mebane.¹¹ However, due to technological changes and foreign competition, North Carolina was hit with the closing of forty-seven furniture companies during the 1990s, including the 1993 closure of the White Furniture Company.¹² The *North Carolina Encyclopedia* notes:

The 1980s marked the "golden era" of the North Carolina furniture industry, when employment peaked at 90,000 people and the state added nearly 200 new furniture companies to its ranks. However, the boom did not continue. Trouble began in the 1990s with the globalization of the industry and an increase in free trade, resulting in competition from foreign furniture corporations and necessary cost-cutting measures from U.S. firms. The outsourcing of production services to Latin American and Asian countries led to a large decrease in furniture production and employment in North Carolina. China became the North Carolina furniture

⁶ White Furniture Company National Register of Historic Places nomination, 1982.

⁷ Carole Watterson Troxler and William Murray Vincent, *Shuttle and Plow: A History of Alamance County, North Carolina* (Alamance County Historical Association, 1999).

⁸ Walter Whitaker, *Centennial History of Alamance County, 1849-1949* (Burlington: Alamance County Historical Association, 1949).

⁹ Population figures drawn from respective decennial U. S. Census data.

¹⁰ Beth Keane, *North Carolina State Historic Preservation Office National Register Study List Application*, 2007.

¹¹ U. S. Census data accessed May 15, 2011, www.ancestry.com.

¹² Bill Bamberger and Cathy N. Davidson. *Closing: The Life and Death of an American Factory* (New York: W. W. Norton, 1998).

Old South Mebane Historic District
Name of Property

Alamance County, NC
County and State

industry's most effective competitor, producing furniture of equal quality that was available to consumers at a lower price.¹³

The latter years of the twentieth and the first decade of the twenty-first centuries, however, have contributed to rapid growth in Mebane due to the community's proximity to large cities both to the east and west of the city. The completion of the I-85/40 corridor just east of Mebane has made an easy commute from Mebane east to Raleigh, Durham and the Research Triangle, as well as west to Burlington, Graham, and Greensboro. The population has swelled to 9,000 in recent years and Mebane has evolved from a quiet company town and farm-to-market center to a growing hub for light manufacturing, retail, service, and a bedroom community for commuters. The Old South Mebane Historic District has stabilized and is in a generally good state of preservation, with well-tended lawns, cared-for homes, and an overall sense of stability.

¹³ *North Carolina Encyclopedia* website, www.ncpedia.org, accessed June 25, 2011.

Old South Mebane Historic District
Name of Property

Alamance County, NC
County and State

9. Major Bibliographical References

Bibliography (Cite the books, articles, and other sources used in preparing this form.)

Books

Bamberger, Bill, and Davidson, Cathy N. *Closing: The Life and Death of an American Factory*. New York: W. W. Norton, 1998.

Euliss, Elinor Samons, ed. *Alamance County: The Legacy of Its People and Places*. Greensboro: Legacy Publications, 1984.

Stockard, Sallie Walker. *The History of Alamance*. 1900; rpt. 1986, Burlington: Alamance County Historical Museum, Inc.

Troxler, Carole Watterson and William Murray Vincent. *Shuttle and Plow: A History of Alamance County, North Carolina*. n.p.: Alamance County Historical Association, Inc., 1999.

Whitaker, Walter. *Centennial History of Alamance County, 1849-1949*. Burlington, N.C.: Alamance County Historical Association, 1949.

Maps

Sanborn Map Company. *Sanborn Maps, Mebane, North Carolina*. New York: Sanborn Map Company, 1924, 1945.

Unpublished Materials

Marquez-Frees, Linda, and Jim Sumner, *White Furniture Company*. National Register Nomination. North Carolina Department of Cultural Resources. Raleigh, NC, 1982.

Keane, Beth. *Old South Mebane Historic District*. North Carolina Study List Application. North Carolina Department of Cultural Resources. Raleigh, NC, 2007.

Internet Sources

<http://digital-libraries.saic.edu>, accessed June 1, 2011.

NCLive Website: www.nclive.org, accessed May 15, 2011

www.ancestry.dom, accessed May 15, 2011.

North Carolina Encyclopedia website: www.ncpedia.org/geography/alamance, accessed June 25, 2011.

www.stoppingpoints.com/north-carolina, accessed June 15, 2011.

City of Mebane website: www.cityofmebane.com, accessed May 30, 2011.

www.wikipedia.org/wiki/Alamance_County_North_Carolina, accessed June 17, 2011.

www.mebanepresbyterian.org, accessed on June 15, 2011.

www.fbcmebane.com, accessed June 15, 2011.

Old South Mebane Historic District
Name of Property

Alamance County, NC
County and State

Previous documentation on file (NPS):

preliminary determination of individual listing (36 CFR 67 has been requested)
 previously listed in the National Register
 previously determined eligible by the National Register
 designated a National Historic Landmark
 recorded by Historic American Buildings Survey # _____
 recorded by Historic American Engineering Record # _____
 recorded by Historic American Landscape Survey # _____

Primary location of additional data:

State Historic Preservation Office
 Other State agency
 Federal agency
 Local government
 University
 Other
Name of repository: _____

Historic Resources Survey Number (if assigned): _____

10. Geographical Data

Acreage of Property 103 +/- acres
(Do not include previously listed resource acreage.)

UTM References

(Place additional UTM references on a continuation sheet.)

1	<u>17</u> Zone	<u>65540</u> Easting	<u>3995880</u> Northing	3	<u>17</u> Zone	<u>655820</u> Easting	<u>3994480</u> Northing
2	<u>17</u> Zone	<u>656120</u> Easting	<u>3995620</u> Northing	4	<u>17</u> Zone	<u>655560</u> Easting	<u>3994660</u> Northing

Verbal Boundary Description (Describe the boundaries of the property.)

The boundaries of this district are shown by a dark line on the district map at a 1:200' scale.

Boundary Justification (Explain why the boundaries were selected.)

The boundaries for this historic district encompass the entirety of the intact portions of the historic residential neighborhood in the south section of the city of Mebane. The area immediately to the north of the nominated area contains non-historic commercial and industrial buildings and to the northwest is the previously-listed Durham Hosiery Mill. The areas to the south, east, and west consist of residential neighborhoods less than fifty years of age or historic houses that no longer retain historic integrity.

11. Form Prepared By

name/title David L. Taylor, Principal
organization Taylor & Taylor Associates, Inc. date June, 2011
street & number Post Office Box 333 telephone 814-648-4900
city or town Brookville state PA zip code 15825
e-mail tta.david@gmail.com

Old South Mebane Historic District
Name of Property

Alamance County, NC
County and State

Additional Documentation

Submit the following items with the completed form:

- **Maps:** A **USGS map** (7.5 or 15 minute series) indicating the property's location.
A **Sketch map** for historic districts and properties having large acreage or numerous resources. Key all photographs to this map.
- **Continuation Sheets**
- **Additional items:** (Check with the SHPO or FPO for any additional items.)

Photographs:

Submit clear and descriptive photographs. The size of each image must be 1600x1200 pixels at 300 ppi (pixels per inch) or larger. Key all photographs to the sketch map.

Name of Property: Old South Mebane Historic District

City or Vicinity: Mebane

County: Alamance State: North Carolina

Photographer: David L. Taylor

Date Photographed: Nos. 1-13, October, 2010; Nos. 14-20, August, 2011

Description of Photograph(s) and number:

- 1 of 19 Streetscape, east side of South Fifth Street, looking southwest, showing two of the district's most substantial examples of the Craftsman style.
- 2 of 19 Mebane Presbyterian Church, looking southwest
- 3 of 19 618 South Fifth Street, which marks a portion of the district's southern boundary, looking east
- 4 of 19 500 South Fifth Street, a Dutch Colonial Revival-style house, looking west
- 5 of 19 410 South Fourth St., looking northwest
- 6 of 19 209 West Holt Street, a substantial Queen Anne-style house, looking south
- 7 of 19 307 West Holt Street, looking south
- 8 of 19 Streetscape, East Wilson Street, looking southwest
- 9 of 19 102 East Jackson Street, looking south
- 10 of 18 301 West Lee Street, similar to 410 South Fourth Street (Photo 12)
- 11 of 19 105 West McKinley Street, looking south and showing one of the several house types which appear in repetition in the district

Old South Mebane Historic District
Name of Property

Alamance County, NC
County and State

12 of 19 401 South Fourth Street, northwest perspective, looking southeast

13 of 19 Streetscape West Austin Street, south side

14 of 19 Streetscape, 500 block of S. Third St., looking north

15 of 19 Streetscape, 500 block of S. Fourth Street, looking north

16 of 19 Streetscape, 400 block of S. Fourth St., looking north

17 of 19 Streetscape, 300 block of S. Fourth St., looking north

18 of 19 Intersection of W. Lee St. and S. Second St., looking northwest

19 of 19 Streetscape, 200 block of S. second, looking northwest

Property Owner:

(Complete this item at the request of the SHPO or FPO.)

name Multiple owners
street & number _____ telephone _____
city or town _____ state _____ zip code _____

Paperwork Reduction Act Statement: This information is being collected for applications to the National Register of Historic Places to nominate properties for listing or determine eligibility for listing, to list properties, and to amend existing listings. Response to this request is required to obtain a benefit in accordance with the National Historic Preservation Act, as amended (16 U.S.C.460 et seq.).

Estimated Burden Statement: Public reporting burden for this form is estimated to average 18 hours per response including time for reviewing instructions, gathering and maintaining data, and completing and reviewing the form. Direct comments regarding this burden estimate or any aspect of this form to the Office of Planning and Performance Management, U.S. Dept. of the Interior, 1849 C. Street, NW, Washington, DC.

United States Department of the Interior
National Park Service

National Register of Historic Places
Continuation Sheet

Section number 10 Page 51

UTM References (cont.)

5.	<u>17</u>	<u>655200</u>	<u>3995320</u>
	Zone	Easting	Northing